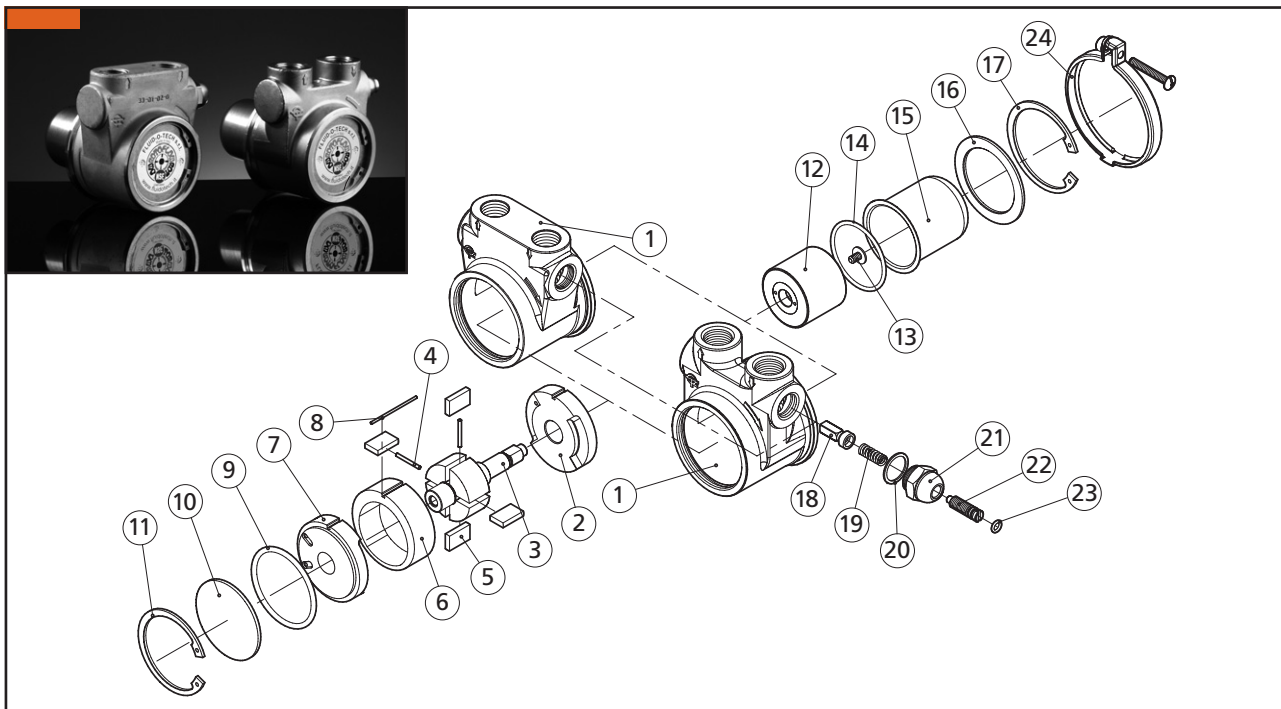


Fluid-o-Tech TH series magnet drive rotary vane pumps. Spare parts list



POS.	DESCRIPTION	MATERIAL	CODE	NOTES
1	HOUSING WITH BYPASS	BRASS	33-01-01	GAS PORTS
			33-01-06	NPT PORTS
		S.S.	33-01-02	GAS PORTS
			33-01-03	NPT PORTS
2	REAR FLANGE	GRAPHITE	28007	
3	ROTOR	S.S.	33-02-01	
4	PIN	S.S.	28063	500 l/h
			28024	600 l/h
			28064	700 l/h
			28004	800 l/h
			28065	900 l/h
			28026	1000 l/h
5	VANE	GRAPHITE	28005	
6	LINER	GRAPHITE	28051	500 l/h
			28023	600 l/h
			28062	700 l/h
			28006	800 l/h
			28061	900 l/h
28025	1000 l/h			
7	FRONT FLANGE	GRAPHITE	28002	
8	ALIGNMENT PIN	S.S.	28008	
9	O-RING	NBR	28009	
		VITON	28021	
		EPDM	28068	

Fluid-o-Tech TH series magnet drive rotary vane pumps. Spare parts list

POS.	DESCRIPTION	MATERIAL	CODE	NOTES
10	CAP	S.S.	28015	
11	SEEGER CIRCLIP	STEEL	28016	
12	DRIVEN MAGNET	PLASTIC	201722	
13	SCREW	S.S.	201406	
14	O-RING	NBR	90-23-34	
		VITON	90-23-53	
		EPDM	90-23-52	
15	MAGNET CUP	S.S.	33-13-01	
16	WASHER	S.S.	33-09-01	
17	SEEGER CIRCLIP	STEEL	201001	
18	SOLID BYPASS VALVE	BRASS	22307	
		PLASTIC	22541	
		S.S.	22129	
19	SPRING	S.S.	22505	
20	WASHER	NYLON®	22054	
21	BYPASS NUT	BRASS	22506	
		S.S.	22519	
22	BYPASS SCREW	BRASS	28071	
		S.S.	28072	
23	BYPASS SCREW O-RING	NBR	22055	
		VITON	22120	
		EPDM	22475	
24	CLAMP WITH SCREW	S.S.	202500	

Fluid-o-Tech reserves the right to alter the specifications indicated in this catalogue at any time and without prior notice.

SPARES – TH-HV – 01/09 Ed.

Fluid-o-Tech srl
Via Leonardo da Vinci, 40
20094 Corsico, Milano, Italy
Tel. +39 02 8917071
Fax +39 02 89170799

Fluid-o-Tech Int'l Inc.
161 Atwater St.,
Plantsville CT (USA) 06479
Tel. +1 (860) 276-9270
Fax +1 (860) 620-0193

Fluid-o-Tech Int'l Inc. Japan
203, 2-17-19, Ebara, Shinagawa
Tokyo 142-0063, Japan
Tel. +81 (0) (3) 3783-9660
Fax +81 (0) (3) 3783-9661

Fluid-o-Tech Asia (Beijing) Co., Ltd
Jingwei Industrial Zone,
Beifang Huairou, Beijing, 101400, PRC
Tel. +86 (0) (10) 61684650
Fax +86 (0) (10) 61684651