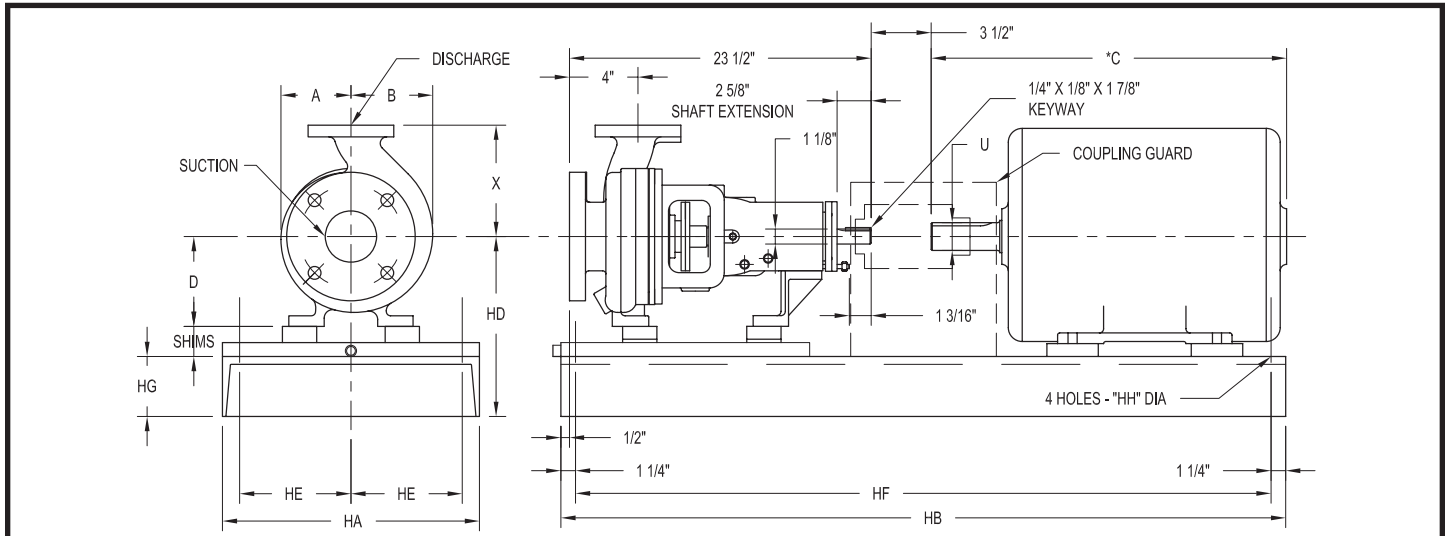
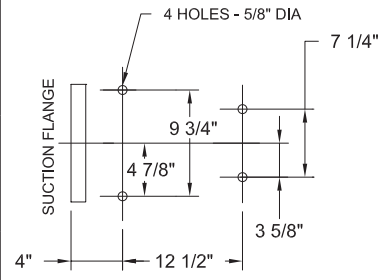


Chemical & Process ANSI Pumps



SIZE	SUCT	DISCH	A	B	D	X	MAX IMP DIA	150# FLANGE DRILLING						300# FLANGE DRILLING						* WT IN LBS
								SUCTION			DISCHARGE			SUCTION			DISCHARGE			
								NO.	SIZE	B.C.	NO.	SIZE	B.C.	NO.	SIZE	B.C.	NO.	SIZE	B.C.	
A05	2	1	6 ³ / ₁₆	6 ¹³ / ₁₆	8 ¹ / ₂	9 ¹ / ₂	4	4%	3%	5%	4	3%	3%	150						
A10	3	2	5	5 ¹¹ / ₁₆	8 ¹ / ₂	7 ¹ / ₂	4	6	3%	4%	6%	8	3%	5	160					
A50	3	1 1/2	6 ³ / ₁₆	6 ¹³ / ₁₆	8 1/4	9 1/2	4	3/4	6	4	3%	3%	8	7/8	6%	4	7/8	4 1/2	175	
A60	3	2	6 ³ / ₁₆	6 ¹³ / ₁₆	9 1/2	9 1/2	4	6	3%	4%	6%	8	3/4	5	185					
A70	4	3	6 1/2	7 1/2	11	9 1/2	8	7 1/2	3/4	6	7 1/2	8	7/8	6%	6%	200				
A20	3	1 1/2	7 ⁷ / ₁₆	8 1/4	10 1/2	10 1/2	4	6	3%	3%	6%	4	7/8	4 1/2	200					
A30	3	2	7 ⁷ / ₁₆	8 1/4	11 1/2	11 1/2	4	3/4	6	4	3/4	4%	8	7/8	5	220				
A40	4	3	7 1/4	8 ¹⁵ / ₁₆	12 1/2	12 1/2	8	7 1/2	3/4	6	7 1/2	8	7/8	6%	6%	240				
A80	6	4	8 ¹¹ / ₃₂	9 ¹⁵ / ₃₂	13 1/2	13 1/2	8	7/8	9 1/2	8	3/4	7 1/2	12	10%	8	7/8	7 1/2	280		



(* Weight is based on 150# casing.

Flange thickness per ASA Std B16, 5-1957, Flat Face.

PUMP MOUNTING HOLES

MOTOR FRAME	C	U	BASE NO	HA	HB	HD		HE	HF	HG	HH	* WT	MOTOR FRAME	C	U	
						A10-05-50-60-70	A20-30-40-80									
143T	13 3/4	3/8	4	12	45	12	13 3/4	4 1/2	42 1/2	3 3/16	3/4	226	182	14 1/4	7/8	
145T	13 3/4											226	184	15 1/4		
182T	14 1/4	310										213	17 1/2			
184T	15 1/4	310										215	19			
213T	17 3/4	340														
215T	19 1/4	340														
254T	22 1/4	1 1/8	5	15	52	12 3/4	14 1/4	6	49 1/2	3 1/8	3/4	527	254U	22 3/4	1 1/8	
256T	24 1/4											527	256U	24 3/4		
284T	25 1/4	1 1/8										582	284U	26 1/4		1 1/8
284TS	24 1/2	1 1/8										582	286U	27 3/4		
286T	27 3/4	1 1/8										643				
286TS	26	1 1/8										643				
324T	28 3/4	2 1/8	834	324U	29 3/4	1 1/8										
324TS	27 1/4	1 1/8	834	324S	26 3/4											
326T	30 1/4	2 1/8	899	326U	30 3/4											
326TS	28 3/4	1 1/8	899	326S	28 1/4											
364T	33 3/4	2 3/8	1059	364U	33 3/4		2 3/8									
364TS	31	1 1/8	1059	364US	31											
365TS	32	1 1/8	1124	365U	34 3/4											
			1124	365US	32											
404TS	34 1/4	2 3/8	1454	404US	34 3/4	2 3/8										
405TS	36	2 3/8	1454	405US	36											
			1904	444US	38 3/4											
			1904	445US	40 3/4											

Customer				Shop Order No.				Date:		By:	
Pump Data	Fig. No.	Size	Curve No.	GPM	Head	Sp. Gr.	Temp.	Rotation	Packing/Seal		
Motor Data	MFGR	Hp	RPM	Phase-Cycle Voltage		Frame	Enclosure	Insulation	Furnished by	Mounted by	



PUMPS & SYSTEMS

SECTION 36
PAGE 29
DATE 9/09