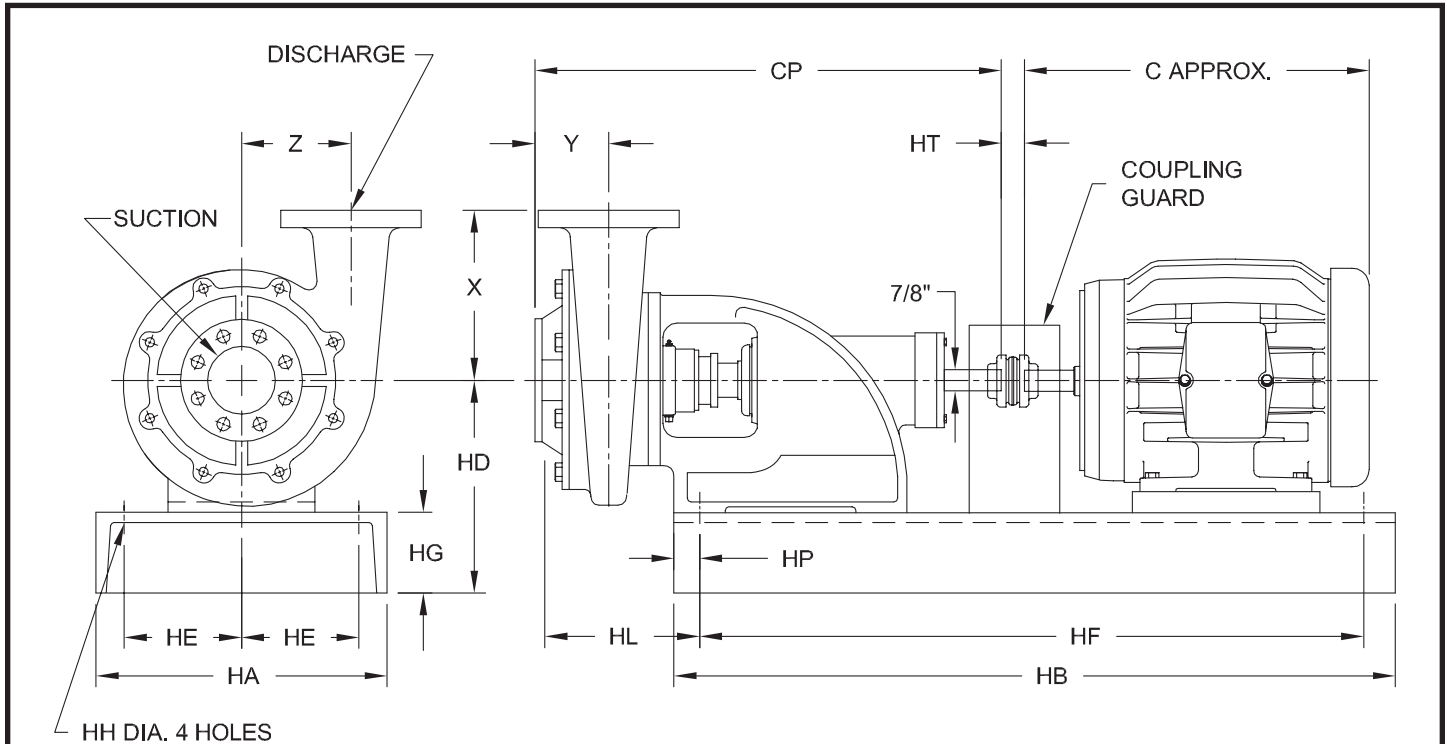


## End Suction Centrifugal Pumps - Semi-Open Impeller



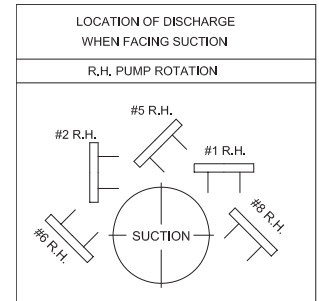
\* USE THIS DIMENSION WHEN USING BASE 17716-8

### DIMENSIONS IN INCHES

PUMP SIZE	SUCTION 125LB				DISCHARGE 125LB				X	Y	Z	CP	HL	*HL
	SIZE	DIA. FLG.	BOLTS	BOLT CIRCLE	SIZE	DIA. FLG.	BOLTS	BOLT CIRCLE						
1	1½	5	4 - ½	3¾	1	4¼	4 - ½	3⅝	5	3¼	3½	17⅝	5⅞	6¼
1½	2	6	4 - 5/8	4¾	1½	5	4 - ½	3⅝	5½	3⅝	3¼	17⅝	6⅞	6½

### BASE DIMENSIONS IN INCHES

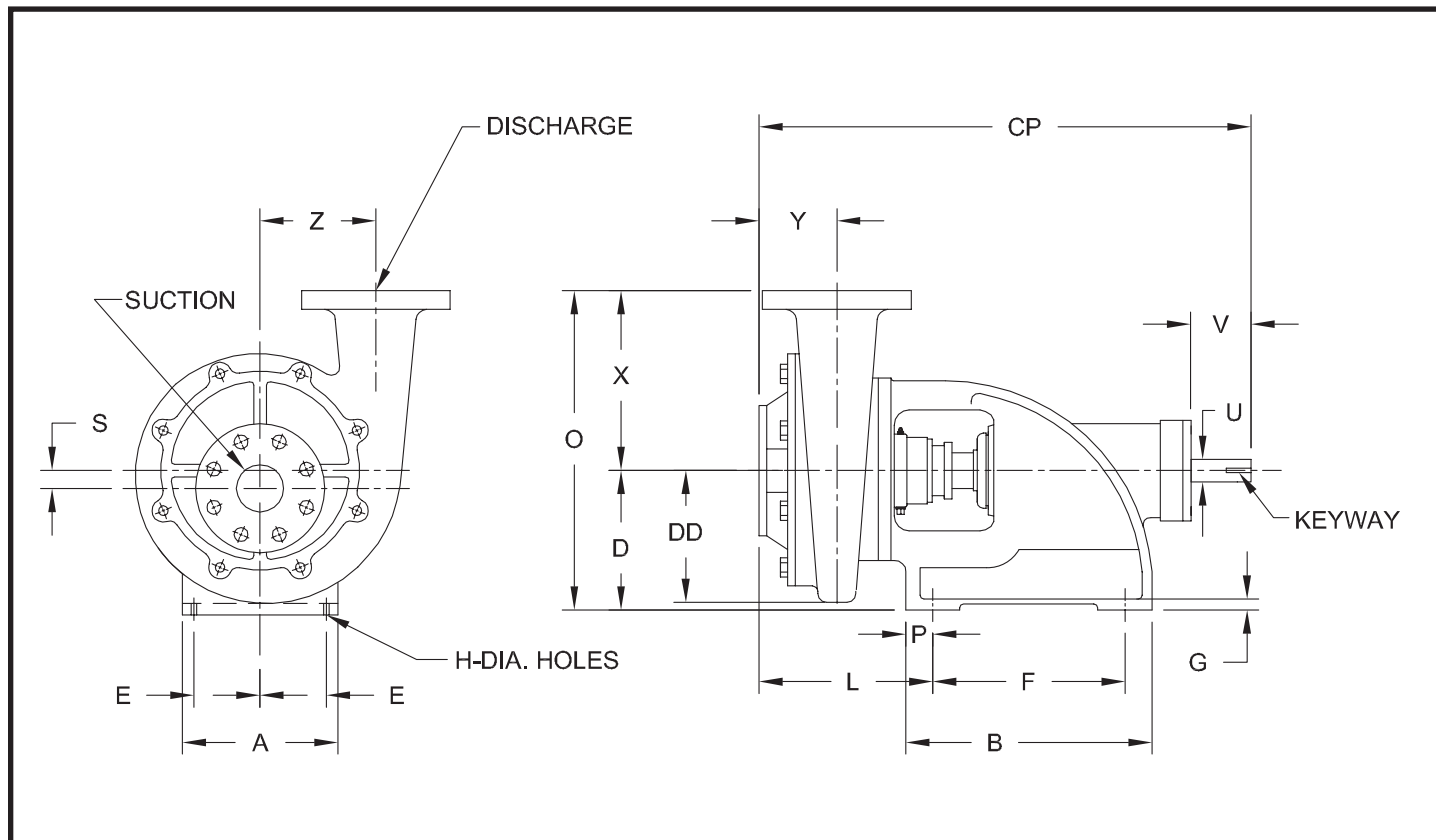
FRAME NO.	48	56	143T	145T	182T	184T	213T	215T	254T
BASE NO.	17716-1	17716-2	11716-2	11716-2	16812	16812	17716-5	17716-5	17716-8
HA	8	10	10	10	12	12	12	12	15
HB	22	24	24	24	26	26	30	30	36
C	11	13 <sup>11/16</sup>	13⅝	13⅝	14⅝	15⅝	17¾	19¼	22⅞
HD	7¾	8⅞	8⅞	8⅞	8½	8½	8½	8½	9¼
HE	3	4	4	4	4¾	4¾	4¾	4¾	5¼
HF	20¾	22¾	22¾	22¾	24¾	24¾	28¾	28¾	34
HG	2¼	2⅝	2⅝	2⅝	3	3	3	3	3½
HH	5/8	5/8	5/8	5/8	5/8	5/8	5/8	5/8	5/8
HP	5/8	5/8	5/8	5/8	5/8	5/8	5/8	5/8	1
HT	½	½	½	½	¾	¾	¾	¾	1



DISCHARGE POSITIONS SHOWN EACH 45°

Customer				Shop Order No.			Date:		By:	
Pump Data	Fig. No.	Size	Curve No.	GPM	Head	Sp. Gr.	Temp.	Rotation	Packing/Seal	
Motor Data	MFGR	Hp	RPM	Phase-Cycle Voltage		Frame	Enclosure	Insulation	Furnished by	Mounted

## End Suction Centrifugal Pumps - Semi-Open Impeller



DIMENSIONS IN INCHES - FLANGES ARE 125LB A.S.A. STD

SIZE	SUCT.	DISCH.	A	B	CP	D	DD	E	F	G	H	L	O	P	U	V	X	Y	Z	KEYWAY
1	1½	1	5	7½	17¾	5½	4	2	5½	¾	½	6¼	10½	1	7/8	2	5	¾	¾	3/16 X 3/32 X 2
1½	2	1½	5	7½	17¾	5½	4¼	2	5½	¾	½	6½	11	1	7/8	2	5½	¾	¾	

Customer				Shop Order No.			Date:		By:	
Pump Data	Fig. No.	Size	Curve No.	GPM	Head	Sp. Gr.	Temp.	Rotation	Packing/Seal	
Motor Data	MFR	Hp	RPM	Phase-Cycle Voltage		Frame	Enclosure	Insulation	Furnished by	Mounted

SECTION 14  
PAGE 12  
DATE 7/07



A Crane Co. Company

### PUMPS & SYSTEMS

USA: (937) 778-8947 • Canada: (905) 457-6223 • International: (937) 615-3598