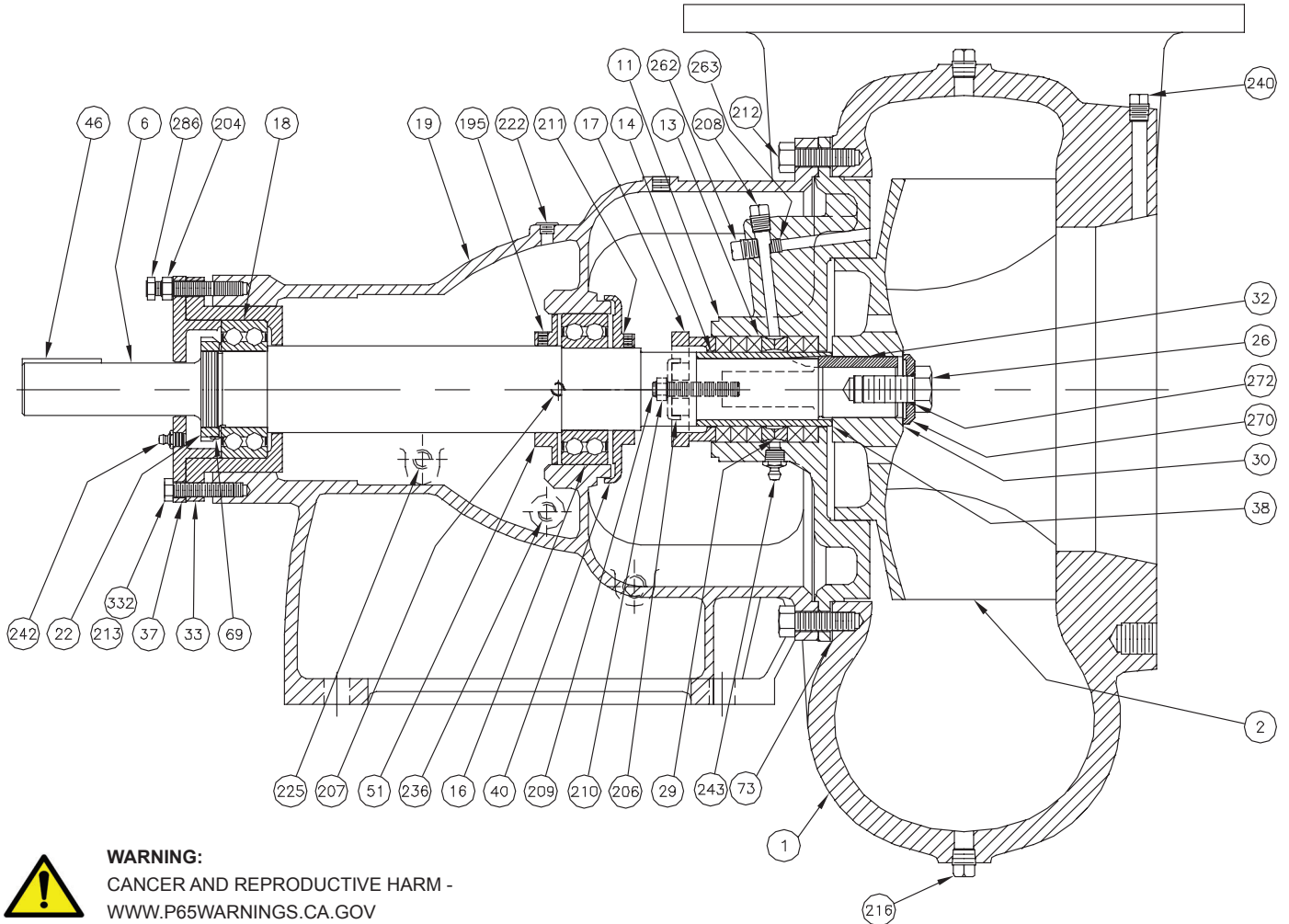


**Fig. 4060 Series End Suction Centrifugal Pumps
Standard Construction - Packed Stuffing Box
Grease Lubricated Bearings**



WARNING:
CANCER AND REPRODUCTIVE HARM -
WWW.P65WARNINGS.CA.GOV

Item No.	Name of Part	Item No.	Name of Part	Item No.	Name of Part
1	Casing	32	Impeller Key	209	Cap Screw, Machine Bolt, Or Stud
2	Impeller	33	Bearing Housing (Outboard)	210	Hex Nut
6	Pump Shaft	37	Bearing Cover (Outboard)	213, 332	Cap Screw
11	Packing Box Cover	* 38	Shaft Gasket	216, 240	Pipe Plug
*13	Packing	40	Deflector	222	Drive Caps
*14	Shaft Sleeve	46	Coupling Key	225	Pipe Plug
*16	Ball Bearing (Inboard)	51	Grease Retainer	236	Pipe Plug
17	Split Gland	69	Lock Washer (Bearing)	242	Grease Fitting
*18	Ball Bearing (Outboard)	*73	Casing Gasket	243	Grease Fitting
19	Frame	195, 211	Set Screw	262	Pipe Plugs
22	Bearing Locknut	204	Adjusting Lock Nut	263	Pipe Plugs
*26	Impeller Screw	206	Split Gland Clip	*270	Impeller Washer
*29	Lantern Ring	207	Grease Fitting	*272	Impeller Screw "o" Ring
*30	Impeller Washer Gasket	208	Pipe Plug	286	Jack Screw

* Recommended spare parts

Repair Parts

Liquid End Parts							
Please Order By The Part No							
Item No.	Name and Description			Cast Iron Part No.	#8 Bronze Part No.	316 SS Part No.	Drawing No.
1	Casing with Plugs	Pump Size	Code				
		4 x 3 x 12	3165	0073090	0073502	NA	41290
		4 x 4 x 12DV	4065	0087380	0087381	0087382	41571
		6 x 4 x 12DV	4266	0087384	0087385	NA	41460
		6 x 6 x 12DV	6066	0087386	0087387	0087388	41462
		8 x 6 x 12DV	6166	0087390	0087391	0087392	41464
		8 x 8 x 12DV	8065	0073095	0073507	0087394	41339
NOTE (1)		10 x 10 x 12DV	7065	0073094	0073506	NA	41340
2	Impeller NOTE (2)	Pump Size	Code				
		4 x 3 x 12	3165	0052151	0052153	NA	27160
		4 x 4 x 12	4065	0081086	0081088	0081090	27894
		6 x 4 x 12	4262	0054397	0054398	NA	33641
		6 x 4 x 12	4265-4266	0052155	0052157	NA	27158
		6 x 6 x 12	6056-6066	0052842	0052844	0077102	27176
		8 x 6 x 12	6165-6166	0054399	0054400	0077110	33642
		8 x 8 x 12	8065	0045405	0045407	0075618	33506
		10 x 10 x 12	7065	0052147	0052149	NA	27170
* 73	Casing Gasket - 1/16" thick			0043981	0043981	0043981	118-080
212	Cap Screws - 1/2" x 1 1/4" for Item 1 (8 Req'd)			0000437	0015613	0045955	-

NOTE: 1) Double Volute Casing will be furnished as replacement on pumps originally fitted with single volute casing.
 2) Specify Part No. and Impeller Diameter required. NA - Not Available

Pump Shaft And Parts - (Specify Any Items Required With Shaft)

Item No.	Name and Description		All Iron Part No.	Bronze Fitted Part No.	316 SS Part No.	Drawing No.
6	Pump Shaft only - Fig. 1 - Design A					
		SAE 4140 Standard Steel	0091159	0091159	0091159	34657
	Alternate -	416 Stainless Steel	0092943	0092943	0092943	34657
		316 Stainless Steel	0091161	0091161	0091161	34657
		C-20 Stainless Steel	0091162	0091162	0091162	34657
6	Pump Shaft only - Fig. 1 - Design B					
		SAE 4140 Standard Steel	0084971	0084971	0084971	34366
	Alternate -	416 Stainless Steel	0087404	0087404	0087404	34366
		316 Stainless Steel	0087405	0087405	0087405	34366
		C-20 Stainless Steel	0087406	0087406	0087406	34366
(1)	Pump Shaft only - Fig. 2 - Design					
		SAE 4140 Standard Steel	0044634	0044634	0044634	26847
	Alternate -	302 Stainless Steel	0044635	0044635	0044635	26847
		316 Stainless Steel	0044636	0044636	0044636	26847
		C-20 Stainless Steel	0044637	0044637	0044637	26847
* 14	Shaft Sleeve	Standard	316 SS	#8 Bronze	316 SS	
			0075601	0043992	0075601	118-083
		Alternate	440C S.S.	440C S.S.		
		0043995	0043995		118-083	
* 26	Impeller Screw 316 S.S. (Self Locking)	3/4" - New Style	0080387	0080387	0080387	-
		5/8" - Old Style	0075147	0075147	0075147	-
* 30	Impeller Washer Gasket Rulon	3/4" I.D.	0080310	0080310	0080310	116-040
		5/8" I.D.	0078741	-	-	116-040
32	Impeller Key - Design A 3/8 x 5/16 x 1 1/4"		0089604	0089604	0089604	118-761
* 38	Impeller Key - Design B 3/8 x 5/16 x 1 1/4"		0055876	0055876	0055876	118-761
		Shaft Sleeve Gasket - Rulon	0068368	0068368	0068368	119-157
* 270	Impeller Washer 316 SS	3/4" I.D.	0080305	0080305	0080305	119-589
		5/8" I.D.	0078738	-	-	119-589
* 272	O-Ring for Item 26 Buna-N teflon Coated	3/4" I.D.	0080301	0080301	0080301	111-279
		5/8" I.D.	0075690	-	-	111-279

NOTE: (1) Pumps furnished prior to June 1971 included 5/8" shaft fittings. When ordering replacement shaft also order 3/4" shaft fittings.
 (2) Design A construction replaced Design B during 1978.

* Recommended spare parts

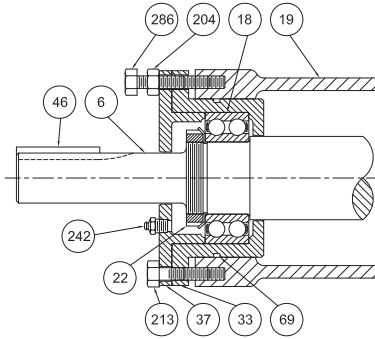


FIG. 1
CURRENT
CONSTRUCTION
DESIGN A & B

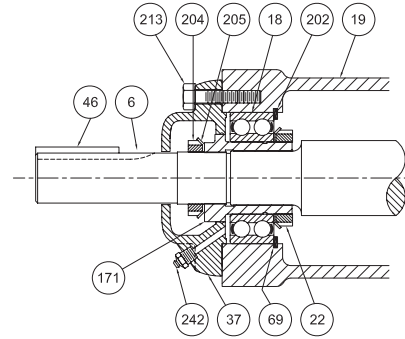


FIG. 2
PREVIOUS DESIGN

Power Frame Parts						
Please Order By The Part No.						
Item No.	Fig. 1		Fig. 2 ‡ Part No.	Name and Description	Drawing No.	
	Design	Part No.			Fig. 1	Fig. 2
* 16	A	0091410	-	Ball Bearing - Inboard - Grease Lube	-	-
	B	0039934	0039934	Ball Bearing - Inboard - Grease Lube	-	-
§	A	0065233	-	Ball Bearing - Inboard - Oil Lube	-	-
§	B	0039936	0039936	Ball Bearing - Inboard - Oil Lube	-	-
* § 18	A-B	0039935	0039935	Ball Bearing - Outboard - Grease or Oil Lube	-	-
‡ 19	A-B	0084973	0043850	Frame Only - For Grease Lube	5229	5216
§	A-B	0084974	0074761	Frame Only - For Oil Lube	5229	5216
22	A-B	0039937	0039937	Bearing Lock Nut - for Item 6 to 171	-	-
33	A-B	0084968	-	Bearing Housing - Outboard - Grease Lube	28083	-
§	A-B	0086711	-	Bearing Housing - Outboard - Oil Lube	28083	-
37	A-B	0084970	-	Bearing Cover - for Grease Lube	28084	-
§	A-B	0087823	-	Bearing Cover - for Oil Lube	28084	-
	-	-	0044644	Bearing Cover	-	26851
40	A	0064892	-	Deflector - Bronze	119-048	-
	B	0044005	0044005	Deflector - Bronze	118-086	118-086
46	A-B	0002219	0002219	Coupling Key	114-932	114-932
51	A	0092408	-	Grease Retainer - Bronze	120-781	-
	B	0044009	0044009	Grease Retainer - Bronze	118-087	118-087
§	A	0092407	-	Slinger - Cast Iron - for Oil Lube	120-781	-
§	B	0044007	0044007	Slinger - Cast Iron - for Oil Lube	118-087	118-087
69	A-B	0007148	0007148	Bearing Lock Washer - Steel	-	-
171	-	-	0044011	Bearing Adapter - Bronze	-	118-088
202	-	-	0039933	Snap Ring - Steel	-	-
204	A-B	0001168	-	Adjusting Lock Nut - for Item 286	-	-
	-	-	0003222	Adjusting Lock Nut - for Item 37	-	-
205	-	-	0002862	Adjusting Lock Washer - for Item 37	-	-
207	A-B	0003131	0003131	Grease Fitting 1/8" for Item 19	-	-
211	A-B	0003074	0003074	Set Screw 1/4" x 3/8" for Item 40 (2 Req'd)	-	-
213	A-B	0000406	-	Cap Screw 3/8" x 1 1/4" for Item 37 (3 Req'd)	-	-
	-	-	0000402	Cap Screw 3/8" x 1 1/4" for Item 37 (4 Req'd)	-	-
236	A-B	0002009	0002009	Pipe Plug 1/4" for Item 19	-	-
242	A-B	0003131	0003131	Grease Fitting 1/8" for Item 37	-	-
275	A-B	0057458	-	Eye Bolt 1/2" x 3/4"	-	-
286	A-B	0084880	-	Jack Screw 3/8" x 2 1/4" (3 Req'd)	-	-
332	A-B	0000395	-	Cap Screw 3/8" x 3/4" for Item 37 (2 Req'd)	-	-
* § 49	A-B	0060300	-	Lip Seal - Oil Lube	-	-
* § 232	A-B	0039938	0039938	"O" Ring - 4.23" x 4.42" x 3/32" for Item 19-16	-	-
* § 233	A	0095854	-	Gasket for Item 37 to Item 33	120-009	-
	B	0044013	0044013	Gasket for Item 37	118-089	118-089
§ 234	A-B	0057697	0057697	Trico Oiler Assembly - #52	-	-
§ 235	A-B	0039022	0039022	Breather - 1/8" Alemite for Item 19	-	-
§ 236	A-B	0002009	0002009	Pipe Plug 1/4" for Item 19	-	-
§ 237	A-B	0002553	0002553	Pipe Plug 1/8" for Item 19	-	-
§ 238	A-B	0002553	0002553	Pipe Plug 1/8" for Item 37	-	-
* § 292	A-B	0095854	-	"O" Ring - 4 1/2" x 4 3/4" x 1/8" for Item 33	-	-

§ Items listed are used with Oil Lubricated power frame.

* Recommended spare parts

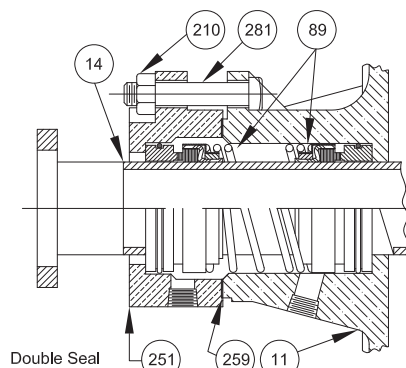
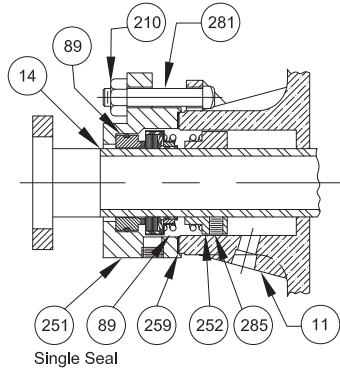
‡ Frame, Item 19, as shown in Fig. 2 is no longer available for replacement; however the other parts are used with Fig. 2 construction are available.

For replacement Frame (19) specify Fig. 1 Frame Assembly as shown below which includes all items shown above plus Bearings (16), Deflector (40) and Grease Retainer (51).

Repair Parts

Item 19A - Frame Assembly	Part No.	
	0091186	With type 316 SS Shaft Sleeve (A-1) - Grease Lubricated
	0091185	With Bronze Shaft Sleeve (BF) - Grease Lubricated
	0091189	With type 316 SS Shaft Sleeve (A-1) - Oil Lubricated
	0091188	With Bronze Shaft Sleeve (BF) - Oil Lubricated

Design A construction replaced Design B construction during 1978.



Packing Box Cover And Mechanical Seals - O-Ring Seat

Item No.	Name and Description	Cast Iron Part No.	#8 Bronze Part No.	316 SS Part No.	Drawing No.
11	Packing Box Cover only	0072256	0072261	0075631	-
* 89	Seal - Single JC Type 1 - Note (2) 2 1/8" I.D.	BF171 0078886	BF1C1 0078885	-	-
	Seal - Single JC Type 9T 2 1/8" I.D.	QXF171 0072270	QXF1C1 0072271	QXF191 0072272	-
	Seal - Double JC Type 1 2 1/8" I.D.	BF271 0054045	BF2C1 0045937	BF1C1 0043483	-
	Seal - Double JC Type 9 2 1/8" I.D.	QXF171 0076963	QXF1C1 0076964	QXF191 0076965	-
208	Pipe Plug - 1/4" for Item 11	0002009	0000019	0006252	-
210	Hex Nut (4 Req'd) 3/8"	0001168	05536	0006012	-
251	Gland Plate	0065173	0044167	0065175	118-145
252	Spring Holder for Type 1 Single Seal	0078888	0078888	-	119-585
* 259	Gasket for Item 251 Velbuna	0044443	0044443	0044443	116-040
262	Pipe Plug 1/4" for Item 11	0002009	0000019	0006252	-
263	Set Screw 3/8" x 1/2" for Item 11 (Internal by-pass plug)	0031140	0031140	0080566	-
271	Pipe Plug 1/4" for Item 11	0065173	0000019	0006252	-
281	Stud 3/8" x 2 1/2" for Item 11 (4 Req'd)	0106366	0106366	0106366	-
285	Set Screw for Item 252	0077303	0077303	-	-
304	Pipe Plug 1/4" for Item 251	0002009	0000019	0006252	-

NOTE: (2) For pumps originally furnished with single type 21 seals, Items 89, 252 and 285 are required for replacement,

Packing Box Cover - Packed Type And Parts

11	Packing Box Cover only	0072256	0072261	0075631	33570
	Packing Box Cover (Note 1)	0049841	0049842	0075630	33570
* 13	Packing 7/16" x 8 1/2" Graph. Asb. (5 Req'd)	0040031 Teflon Impr. 0068473	0040031 0068473	- 0068473	- -
17	Split Gland	131366	131367	131367	118-085A
* 29	Lantern Ring - Half - Teflon (2 Req'd)	0076643	0076643	0076643	119-511
** 206	Gland Clip (2 Req'd)	0044046	0044046	0044046	118-099
208	Pipe Plug 1/4"	0002009	0000019	0006252	-
209	Cap Screw 3/8" x 2 1/4" for Item 17 (2 Req'd)	0070166	0070166	0070166	-
210	Hex Nuts 3/8" for Item 209	0001168	0006012	0006012	-
243	Grease Fitting 3/8"	0003131	0003131	0003131	-
262	Pipe Plug 1/4"	0002009	0000019	0006252	-
263	Set Screw 3/8" x 1/2" for Item 11 (Internal by-pass plug)	0031140	0031140	0080566	-

NOTE: (1) Prior to June 1975, packing box cover was tapped for 2 bolt packing gland only. Replacement packing box cover has 4 bolt tapping for packing gland or seal gland.

* Recommended Spare Parts

** Previous Part Numbers 0044000, 0044004, 0068481, 0068478 used clip 0044046. New Part Numbers 131366 and 131367 DO NOT use clip 0044046