

WARNING:
 CANCER AND REPRODUCTIVE HARM -
 WWW.P65WARNINGS.CA.GOV

DISCONTINUED

Item No.	Name of Part	Item No.	Name of Part	Item No.	Name of Part
1	Casing	32	Impeller Key	210	Nut
2	Impeller	33	Bearing Housing (Outboard)	212, 213	Cap Screws
6	Pump Shaft	37	Bearing Cover (Outboard)	222	Drive Cap
* 7	Wear Ring	* 38	Shaft Gasket	225	Pipe Plug
11	Packing Box Cover	40	Deflector	236	Pipe Plug
* 13	Packing	46	Coupling Key	240	Pipe Plug
* 14	Shaft Sleeve	51	Grease Retainer	242	Grease Fitting
* 16	Ball Bearing (Inboard)	69	Lock Washer (Bearing)	243	Grease Fitting
17	Split Gland	* 73	Casing Gasket	262, 263	Pipe Plugs
* 18	Ball Bearing (Outboard)	195, 211	Set Screw	* 270	Impeller Washer
19	Frame	204	Adjusting Lock Nut	* 272	Impeller Screw "o" Ring
22	Bearing Locknut	206	Split Gland Clip	286	Jack Screw
* 26	Impeller Screw	207	Grease Fitting	332	Cap Screws
* 29	Lantern Ring	208, 216	Pipe Plugs		
* 30	Impeller Washer Gasket	209	Gland Bolt		

* Recommended spare parts

Repair Parts

Liquid Ends Parts

Please Order by the Part No.

Item No.	Name and Description	Std. Brz. Fitted Part No.	Bronze Fitted Part No.	Standard All Iron Part No.	All Bronze Part No.	Drawing No.
1	Casing with Wearing Rings and Plugs Pump Size and Code	Cast Iron with Cast Iron Wearing Ring	Cast Iron with #5 Bronze Wearing Ring	Cast Iron with Cast Iron Wearing Ring	#8 Bronze with #5 Bronze Wearing Ring	
Note 1	4 x 3 x 12 3167 4 x 4 x 12 DV 4067 6 x 4 x 12 DV 4266 6 x 6 x 12 DV 6066 8 x 6 x 12 DV 6166	0073508 0087784 0087787 0087790 0087793	00073867 0087785 0087788 0087791 0087794	0073508 0087784 0087787 0087790 0087793	0073512 0087786 0087789 0087792 0087795	41292 41571 41461 41463 41465
2	Impellers Pump Size and Code	#8 Bronze	#8 Bronze	Cast Iron	#8 Bronze	
Note 2	4 x 3 x 12 3167 4 x 4 x 12 4067 6 x 4 x 12 4266 6 x 6 x 12 6066 8 x 6 x 12 6166	0051035 0051035 0044863 0045358 0045347	0051035 0051035 0044863 0045358 0045347	0051033 0051033 0044861 0045356 0045345	0051035 0051035 0044863 0045358 0045347	27154 27154 26976 33468 33462
* 7	Casing Wearing Ring - for Item 1 4 x 3 x 12 and 4 x 4 x 12 only All Others	Cast Iron 0053584 0049846	#5 Bronze 0068256 0068254	Cast Iron 0053584 0049846	#5 Bronze 0068256 0068254	118582 118500
* 73	Casing Gasket - 1/16" thick - vellumoid	0043981	0043981	0043981	0043981	118-080
212	Cap Screws - for Item 1 (8 Req'd)	0000437	0000437	0000437	0031026	-

NOTE: (1) Double Volute Casing will be furnished as replacement on pumps originally fitted with single volute casing.
(2) Specify Part No. and Impeller Diameter required.

Pump Shaft and Parts - (Specify any items required with shaft)

Item No.	Name and Description	Bronze Fitted Part No.	All Iron Part No.	All Bronze Part No.	Drawing No.	
6	Pump Shaft only - Fig. 1 Design A SAE 4140 Standard Steel Alternate - 416 Stainless Steel 316 Stainless Steel	0091159 0092943 0091161	0091159 0092943 0091161	0091159 0092943 0091161	34657 34657 34657	
6	Pump Shaft only - Fig. 1 Design B SAE 4140 Standard Steel Alternate - 302 Stainless Steel 316 Stainless Steel	0084971 0087404 0087405	0084971 0087404 0087405	0084971 0087404 0087405	34366 34366 34366	
(1)	Pump Shaft only - Fig. 2 Design 4140 Standard Steel 302 Stainless Steel 316 Stainless Steel	0044634 0044635 0044636	0044634 0044635 0044636	0044634 0044635 0044636	26847 26847 26847	
* 14	Shaft Sleeve Standard Alternate	#8 Bronze 0043992 440C-Steel 0043995	316 SS 0075601 440C-Steel 0043995	#8 Bronze 0043992 -	118-083 118-083	
* 26	Impeller Screw - 316 S.S. - (Self Locking)	3/4" New Style 5/8" Old Style	0080387 0075147	0080387 0075147	0080387 0075147	- -
* 30	Impeller Washer Gasket Rulon	3/4" I.D. 5/8" I.D.	0080310 0078741	0080310 0078741	0080310 0078741	- 116-040
32	Impeller Key - Design A - 3/8" x 5/16" x 2"	0089605	0089605	0089605	118-761	
* 38	Impeller Key - Design B - 3/8" x 5/16" x 2 1/4" Shaft Sleeve Gasket - Rulon	0072234 0068368	0072234 0068368	0072234 0068368	118-761 119-157	
* 270	Impeller Washer 316 SS	3/4" I.D. 5/8" I.D.	0080305 0078738	0080305 0078738	0080305 0078738	119-589 119-589
* 272	O-Ring for Item 26 Buna-N - Teflon Coated	3/4" I.D. 5/8" I.D.	0080301 N/A	0080301 N/A	0080301 N/A	111-279 -

NOTE: Pump furnished prior to June 1971 included 3/4" shaft fittings. When ordering replacement shaft also order 3/4" shaft fitting.
Design A construction replaced Design B construction during 1978.

* Recommended spare parts

DISCONTINUED

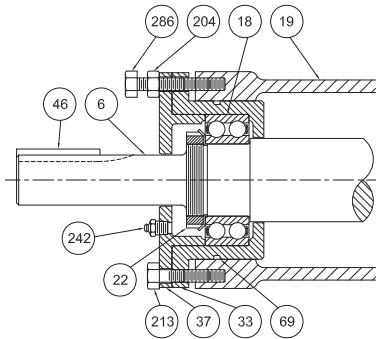


FIG. 1
CURRENT
CONSTRUCTION
DESIGN A & B

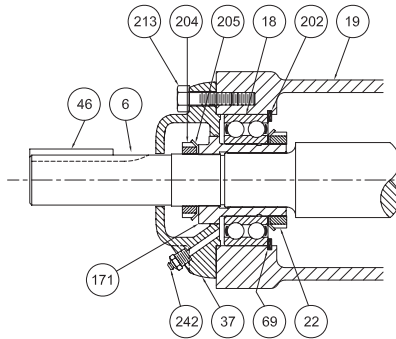


FIG. 2
PREVIOUS DESIGN

Power Frame Parts

Please Order By The Part No.

Item No.	Fig. 1		Fig. 2 ‡ Part No.	Name and Description	Drawing No.	
	Design	Part No.			Fig. 1	Fig. 2
* 16	A	0091410	-	Ball Bearing - Inboard - Grease Lube	-	-
	B	0039934	0039934	Ball Bearing - Inboard - Grease Lube	-	-
§	A	0065233	-	Ball Bearing - Inboard - Oil Lube	-	-
§	B	0039936	0039936	Ball Bearing - Inboard - Oil Lube	-	-
* 18 §	A-B	0039935	0039935	Ball Bearing - Outboard - Grease or Oil Lube	-	-
‡ 19	A-B	0084973	0043850	Frame Only - For Grease Lube	5229	5216
§	A-B	0084974	-	Frame Only - For Oil Lube	5229	5216
22	A-B	0039937	0039937	Bearing Lock Nut - for Item 6 to 171	-	-
33	A-B	0084968	-	Bearing Housing - Outboard - Grease Lube	28083	-
§	A-B	0086711	-	Bearing Housing - Outboard - Oil Lube	28083	-
37	A-B	0084970	-	Bearing Cover - for Grease Lube	28084	-
§	A-B	0087823	-	Bearing Cover - for Oil Lube	28084	-
	-	-	0044644	Bearing Cover	-	26851
40	A	0064892	-	Deflector - Bronze	119-048	-
	B	0044005	0044005	Deflector - Bronze	118-086	118-086
46	A-B	0002219	0002219	Coupling Key	114-932	114-932
51	A	0092408	-	Grease Retainer - Bronze	120-781	-
	B	0044009	0044009	Grease Retainer - Bronze	118-087	118-087
§	A	0092407	-	Slinger - Cast Iron - for Oil Lube	120-781	-
§	B	0044007	0044007	Slinger - Cast Iron - for Oil Lube	118-087	118-087
69	A-B	0007148	0007148	Bearing Lock Washer - Steel	-	-
171	-	-	0044011	Bearing Adapter - Bronze	-	118-088
202	-	-	0039933	Snap Ring - Steel	-	-
204	A-B	0001168	-	Adjusting Lock Nut - for Item 286	-	-
	-	-	0003222	Adjusting Lock Nut - for Item 37	-	-
205	-	-	0002862	Adjusting Lock Washer - for Item 37	-	-
207	A-B	0003131	0003131	Grease Fitting 1/8" for Item 19	-	-
211	A-B	0003074	0003074	Set Screw 1/4" x 3/8" for Item 40 (2 Req'd)	-	-
213	A-B	0000406	-	Cap Screw 3/8" x 1 1/4" for Item 37 (3 Req'd)	-	-
	-	-	0000402	Cap Screw 3/8" x 1 1/4" for Item 37 (4 Req'd)	-	-
236	A-B	0002009	0002009	Pipe Plug 1/4" for Item 19	-	-
242	A-B	0003131	0003131	Grease Fitting 1/8" for Item 37	-	-
275	A-B	0057458	-	Eye Bolt 1/2" x 3/4"	-	-
286	A-B	0084880	-	Jack Screw 3/8" x 2 1/4" (3 Req'd)	-	-
332	A-B	0000395	-	Cap Screw 3/8" x 3/4" for Item 37 (2 Req'd)	-	-
* § 49	A-B	0060300	-	Lip Seal - Oil Lube	-	-
* § 232	A-B	0039938	0039938	"O" Ring - 4.23" x 4.42" x 3/32" for Item 19-16	-	-
* § 233	A	0095854	-	Gasket for Item 37 to Item 33	120-009	-
	B	0044013	0044013	Gasket for Item 37	118-089	118-089
§ 234	A-B	0057697	0057697	Trico Oiler Assembly - #52	-	-
§ 235	A-B	0039022	0039022	Breather - 1/8" Alemite for Item 19	-	-
§ 236	A-B	0002009	0002009	Pipe Plug 1/4" for Item 19	-	-
§ 237	A-B	0002553	0002553	Pipe Plug 1/8" for Item 19	-	-
§ 238	A-B	0002553	0002553	Pipe Plug 1/8" for Item 37	-	-
* § 292	A-B	0095854	-	"O" Ring - 4 1/2" x 4 3/4" x 1/8" for Item 33	-	-

§ Items listed are used with Oil Lubricated power frame.

* Recommended spare parts

‡ Frame, Item 19, as shown in Fig. 2 is no longer available for replacement; however the other parts are used with Fig. 2 construction are available.

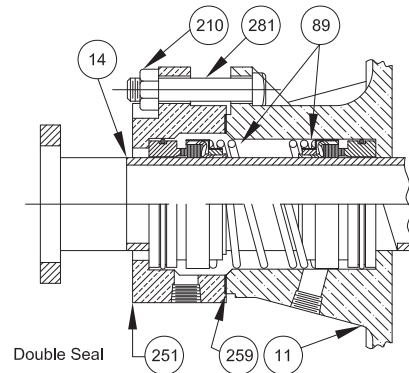
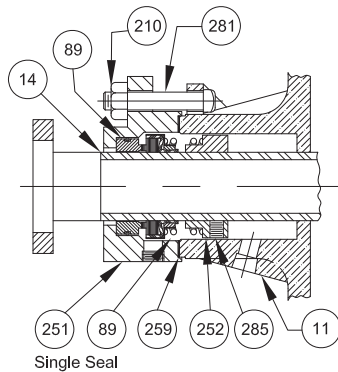
For replacement Frame (19) specify Fig. 1 Frame Assembly as shown below which includes all items shown above plus Bearings (16), Deflector (40) and Grease Retainer (51).

DISCONTINUED

Repair Parts

Item 19A - Frame Assembly	Part No.
With Bronze Shaft Sleeve (BF) - Grease Lubricated	0091185
With type 316 SS Shaft Sleeve (A-1) - Grease Lubricated	0091186
With Bronze Shaft Sleeve (BF) - Oil Lubricated	0091188
With type 316 SS Shaft Sleeve (A-1) - Oil Lubricated	0091189

Design A construction replaced Design B construction during 1978.



Packing Box Cover And Mechanical Seals - O-Ring Seat				
Item No.	Name and Description	Cast Iron Part No.	#8 Bronze Part No.	Drawing No.
11	Packing Box Cover only	0072256	0072261	-
* 89	Seal - Single JC Type 1 - Note (2) 2 1/8" I.D.	BF171 0078886	BF1C1 0078885	-
	Seal - Single JC Type 9T 2 1/8" I.D.	QXF171 0072270	QXF1C1 0072271	-
	Seal - Double JC Type 1 2 1/8" I.D.	BF271 0054045	BF2C1 0045937	-
	Seal - Double JC Type 9 2 1/8" I.D.	QXF171 0076963	QXF1C1 0076964	-
208	Pipe Plug - 1/4" for Item 11	0002009	0000019	-
210	Hex Nut (4 Req'd) 3/8"	0001168	05536	-
251	Gland Plate	0044165	0044167	118-145
252	Spring Holder for Type 1 Single Seal	0078888	0078888	119-585
* 259	Gasket for Item 251 Velbuna	0044443	0044443	116-040
262	Pipe Plug 1/4" for Item 11	0002009	0000019	-
263	Set Screw 3/8" x 1/2" for Item 11 (Internal by-pass plug)	0031140	0031140	-
271	Pipe Plug 1/4" for Item 11	0002553	0000018	-
281	Stud 3/8" x 4 1/2" for Item 11 (4 Req'd)	0000529	0000529	-
285	Set Screw for Item 252	0077303	0077303	-
304	Pipe Plug 1/4" for Item 251	0002009	0000019	-

NOTE: (2) For pumps originally furnished with single type 21 seals, Items 89, 252 and 285 are required for replacement.

Packing Box Cover - Packed Type And Parts				
Item No.	Name and Description	Cast Iron Part No.	#8 Bronze Part No.	Drawing No.
11	Packing Box Cover only	0072256	0072261	33570
	Packing Box Cover (Note 1)	0049841	0049842	33570
* 13	Packing 7/16" x 8 1/16" GAR 8913 (5 Req'd)	0040031 JC1335 0068473	0040031 0068473	-
17	Split Gland	0044000	0044004	118-085
* 29	Lantern Ring - Half - Teflon (2 Req'd)	0076643	0076643	119-511
206	Gland Clip (2 Req'd)	0044046	0044046	118-099
208	Pipe Plug 1/4"	0002009	000019	-
209	Cap Screw 3/8" x 2 1/4" for Item 17 (2 Req'd)	0070166	0070166	-
210	Hex Nuts 3/8" for Item 209	0001168	0006012	-
243	Grease Fitting 1/8"	0003131	0003131	-
262	Pipe Plug 1/4"	0002009	0000019	-
263	Set Screw 3/8" x 1/2" for Item 11 (Internal by-pass plug)	0031140	0031140	-

NOTE: (1) Prior to June 1975, packing box cover was tapped for 2 bolt packing gland only. Replacement packing box cover has 4 bolt tapping for packing gland or seal gland.

* Recommended Spare Parts

DISCONTINUED