

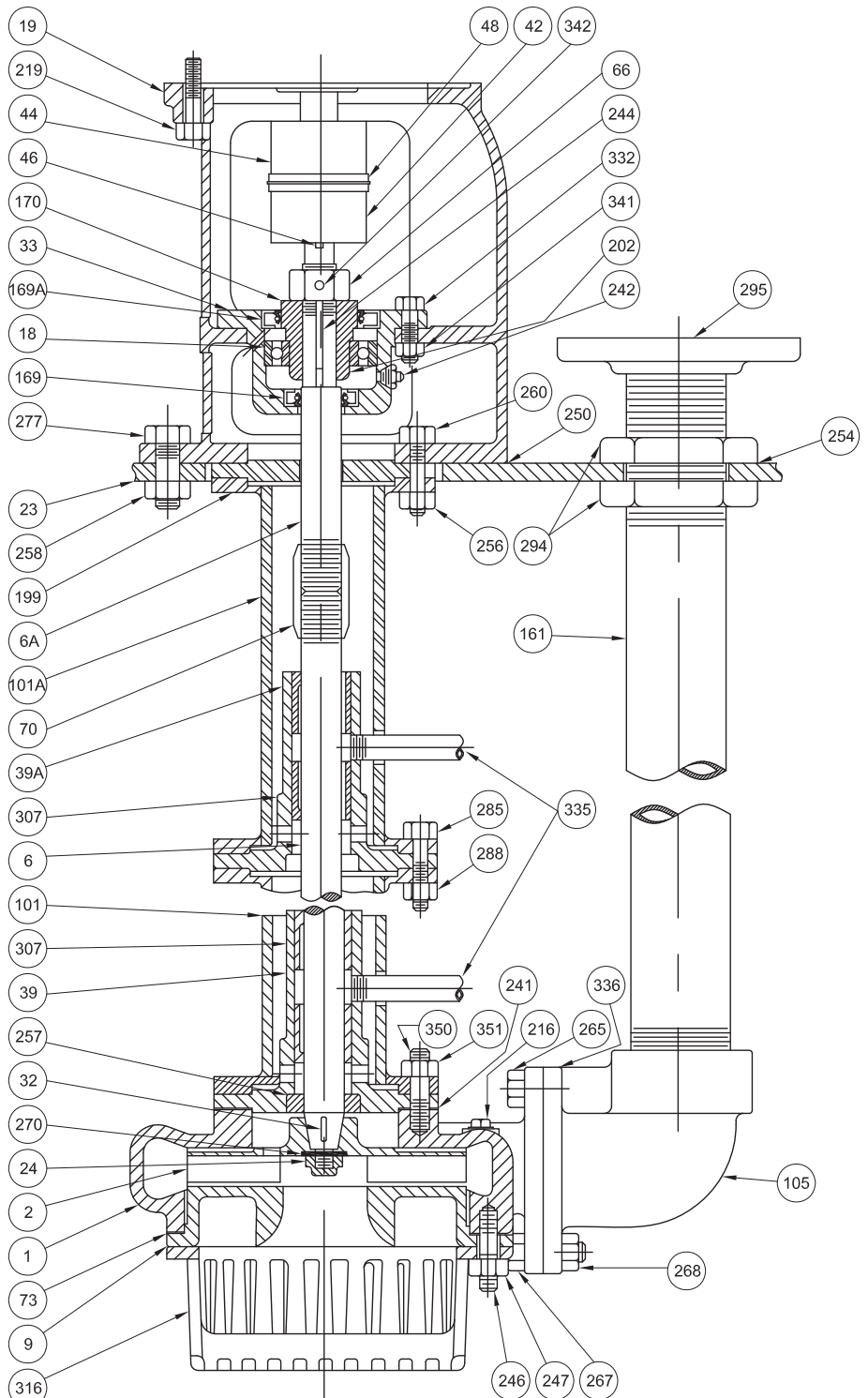
Repair Parts

Item No.	Name Of Part
1	Casing
2	Impeller
6A	Top Shaft
6	Bottom Shaft
9	Suction Cover
* 18	Ball Bearing
19	Frame
23	Base Plate
* 24	Impeller Nut
32	Impeller Key
33	Bearing Housing
* 39	Bearing Bushing
* 39A	Top Bearing Bushing
42	Coupling Half - Pump
44	Coupling Half - Driver
46	Coupling Key
48	Coupling Bushing
66	Shaft Adjusting Nut
70	Shaft Coupling
* 73	Gasket
101	Column
101A	Top Column Pipe
105	Discharge Elbow
161	Discharge Fitting
* 169	Seal - Lower
* 169A	Seal - Top
170	Bearing Adapter
199	Top Closure
202	Snap Ring
216	Pipe Plug
219	Cap Screw
226	Cap Screw (Not Shown)
241	Gasket
242	Grease Fitting
244	Brg. Adapter Key
246	Stud
247	Hex Nut
* 250	Frame Gasket
* 254	Pipe Nut Gasket
256	Hex Nut
257	Choker Ring
258	Hex Nut
260	Cap Screw
265	Cap Screw
267	Cap Screw
268	Hex Nut
270	Impeller Washer
277	Cap Screw
285	Cap Screw
288	Hex Nut
294	Pipe Nut
295	Discharge Flange
307	Bearing Retainer
316	Strainer
332	Cap Screw
335	Lube Pipe Assembly
* 336	Gasket
341	Hex Nut
342	Set Screw
350	Stud
351	Hex Nut

* Recommended spare parts



WARNING:
CANCER AND REPRODUCTIVE HARM -
WWW.P65WARNINGS.CA.GOV



Repair Parts

Liquid End Parts								
Please Order by the Part No.								
Item 1 - Casing with Studs and Nuts ‡								
Pump Size	Cast Iron	#8 Bronze	Drawing No.	For use with Strainer		For use without Strainer		Drawing No.
	Part No.	Part No.		316 Part No.	A-20 Part No.	316 Part No.	A-20 Part No.	
1"	0075276	0102871	Current Construction with 5½" Bolt Circle			0080041	0102903	33512
			33184	0080030	0102890			
1"	0080082	0102872	Previous Construction with 5" Bolt Circle			-	-	-
			32308	-	-			
1½"	0075277	0102873	Current Construction with 5½" Bolt Circle			0080042	0102904	41303
			41167	0080031	0102891			
1½"	0080083	0102874	Previous Construction with 5" Bolt Circle			-	-	-
			4849	-	-			
2½"	0054712	0102875	Current Construction with 5½" Bolt Circle			-	-	-
			41152	-	-			
2½"	0080084	0102876	Previous Construction with 5" Bolt Circle			-	-	-
			4845	-	-			
1¼ S	0080073	0102877	4784	-	-	-	-	-
1½ S	0080074	0102878	4782	0080032	0102893	0070095	0102906	4861
1½ M	0080075	0102879	4805	0080036	0102894	0080044	0102907	4862
2 S	0080076	0102880	4711	0080033	0102895	0080043	0102908	4796
2 M	0080077	0102881	5125	0080034	0102896	0080045	0102909	4846
3 S	0080078	0102882	5137	-	-	-	-	-
3 MD	0080197	0102883	41405	0080201	0102897	0080205	0102910	41440
4 S	0080079	0102884	41121	0080035	0102902	0070098	0102915	41162
4 MD	0080198	0102885	41406	0080202	0102898	0080206	0102911	41441
5 MD & 5 MSD	0080199	0102886	41407	0080203	0102899	0080207	0102912	41442
1 S	-	-	-	0080040	0102892	0080048	0102905	4841
1½ L	0080080	0102888	5130	0080037	0102901	0080046	0102914	5141
6MD & 6 MLD	0080200	0102887	41408	0080204	0102900	0080208	0102913	41408

‡ NOTE: Cast Iron & Bronze casing assemblies finished with pipe plugs.

Item 73 - Casing Gasket ‡			
Pump Size	Material	Part No.	Drawing No.
1" & 1½"	Velbuna Klinger	0004466	112-247
		0010641	
2½"	Velbuna Klinger	0004468 0019062	112-509
1¼ S, 1½ S, 2 S, 3 S, & 4 S	Velbuna Klinger	0004476 0010929	111-779
1½ M, 2 M, 3 MD, 4 MD, 5 MD, 5 MSD, 6 MD, 6 MLD	Velbuna Klinger	0004474 0011307	111-780
1½ L	Velbuna Klinger	0004470 0024964	112-301

‡‡ NOTE: Velbuna used on cast iron and bronze casings. Klinger used on alloy casings.

* Recommended spare parts

Repair Parts

Liquid End Parts						
Please Order by the Part No.						
Item 2 - Impeller						
Pump Size	Cast Iron Part No.	#8 Bronze Part No.	Drawing No.	316 SS Part No.	A-20 SS Part No.	Drawing No.
1"	0009997	0010627	25060	0010651	0010660	24877
1½"	0010690	0010702	25063	0010758	0010772	24864
2½"	0010812	0010828	25055	-	-	-
1 S	-	-	-	0010934	0010942	25025
1¼ S	0010951	0010960	24587	-	-	-
1½ S	0011010	0011020	24737	0035283	0035285	24737
1½ M	0011085	0011088	32189	0035403	0046380	32189
2 S	0011117	0011128	110213	0011170	0011182	24789
2 M	0011250	0011261	32144	0011308	0011321	32304
3 S	0011451	0011458	25054	-	-	-
† 3 MD	0011525	0011542	24758	0011574	0011591	32210
▲ 3 MD	0030781	0030785	26258	0058764	0058765	118882
4 S	0014994	0014996	26102	0029574	0029572	26545
4 MD	0011772	0011787	32400	0011804	0011820	32424
5 MD	0011914	0011924	32222	0011942	0011952	32258
5 MSD	0011772	0011787	32400	0011804	0011820	32424
1½ L	0011384	0011393	32234	0015158	0015166	32243
6 MD	0012032	0012036	32369	0039856	0046374	32639
6 MLD	0094860	0095027	42057	0095532	0095534	42057
† For 4511 - 1" Taper Shaft ▲ For 4521 - 1¼" Taper Shaft						
Item 316 - Strainer						
Pump Size	Cast Iron Part No.	#8 Bronze Part No.	Drawing No.	316 SS Part No.	A-20 SS Part No.	Drawing No.
1½"	0004162	0013480	25065	0040057	0075942	25065
2½"	0004160	0016233	25068	-	-	-
1 S, 1¼ S, 1½ S, 2 S, 3 S, 4 S	0004201	0014719	32306	0040082	0075941	34154
1½ M, 2 M	0004189	0017263	32406	0040081	0035366	32406
3 MD, 4 MD, 5 MD, 5 MSD, 6 MD, 6 MLD	0004189 0004683	0035400 0013804	32361 32360	0033031 0033033	0052348 0052457	32361 - Top 32360 - Bottom
1½ L	0004203	0020382	32302	0075945	0053277	34153
Item 9 - Suction Cover, with pipe plugs where used						
Pump Size	Cast Iron Part No.	#8 Bronze Part No.	Drawing No.	316 SS Part No.	A-20 SS Part No.	Drawing No.
1"	0030076	0034200	24804	0038050	0038052	27809
1½"	0030077	0034201	24891	0035345	0075185	27808
2½"	0030078	0034202	25056	-	-	-
1 S	-	-	-	0038054	0038056	27805
1¼ S	0030079	0034203	24586	-	-	-
1½ S	0030080	0034204	24738	0076098	0076100	27806
1½ M	0030081	0034205	32188	0075181	0075182	34128
2 S	0030082	0034206	24297	0035479	0032824	27804
2 M	0030083	0034207	32146	0038058	0038060	34130
3 S	0004151	0004152	25090	-	-	-
3 MD	0004279	0004281	112-154	0038062	0038064	34131
4 S	0026973	0026975	33132	0076054	0076056	34132
4 MD	0004279	0004281	112-154	0035487	0075183	34127
5 MD	0004275	0004277	112-155	0035485	0075184	34129
5 MSD	0004279	0004281	112-154	0035485	0075184	34129
6 MD	0004615	0004617	114-900	0076058	0076060	114-900
6 MLD	0004615	0004617	114-900	0076058	0076060	114-900
1½ L	0004271	0004273	112-149	0053280	0053278	34133

Repair Parts

Studs & Nuts for Liquid Ends										
Please Order by the Part No.										
Item No.	Fig. No. and Size	Part Name and Size	Steel Part No.	316 SS Part No.	A-20 SS Part No.	416 SS Part No.	No. Req'd.	Where Used		
226	Fig. 4501 All Sizes	Cap Screw ½ x 1½ Stud ½ x 2" Hex Nut - ½"	Current Construction with 5½" Bolt Circle							
			0000434	-	-	-	4	Casing to Column Pipe		
			-	0014622	0029577	0041804	4			
-		0006018	0006019	0005967	4					
226		Fig. 4501 All Sizes	Cap Screw ¾ x 1¼" Stud ¾ x 1¼" Hex Nut - ¾"	Previous Construction with 5" Bolt Circle						
				0000406	-	-	-	4	Casing to Column Pipe	
				-	0014623	0041741	0014535	4		
-			0006012	0006013	05536	4				
246				Stud ½ x 1½	0000580	0012712	0029638	0010273	4	Casing to
247				Hex Nut ½	0001179	0006018	0006019	0005967	4	Suction Head
-			Stud ½ x 1¾	0000582	0014589	0029578	0006751	2	Casing to	
-			Hex Nut ½	0001179	0006018	0006019	0005967	2	Strainer	
226	Fig. 4511 All Sizes		Cap Screw ½ x 1½ Stud ½ x 2" Hex Nut - ½"	0000434	-	-	-	4	Casing to Column Pipe	
		-		0014622	0029577	0041804	4			
246			Stud ½ x 1¾	0000582	0014589	0029578	0006751	4	Casing to	
247			Hex Nut ½	0001179	0006018	0006019	0005967	4	Suction Head	
-	Fig. 4511 All Sizes Except 3 MD	Stud ½ x 2¼ Hex Nut ½	0000586	0029651	0029569	0019286	4	Casing to		
-			0001179	0006018	0006019	0005967	4	Strainer		
-	Fig. 4511 3 MD Only	† Stud ½ x 4½ Hex Nut ½	0000599	0041802	0041803	0038743	4	Casing to		
-			0001179	0006018	0006019	0005967	4	Strainer		
226	Fig. 4521 All Sizes	Cap Screw ½ x 1¼ Stud ½ x 2¼" Hex Nut - ½"	0000437	-	-	-	4	Casing to Column Pipe		
			-	0029651	0029569	0019286	4			
246			Stud ½ x 1¾	0000582	0014589	0029578	0006751	▲ 4	Casing to	
247			Hex Nut ½	0001179	0006018	0006019	0005967	▲ 4	Suction Head	
-	Fig. 4521 All Sizes Except 1½ L	† Stud ½ x 4½ Hex Nut ½	0000599	0041802	0041803	0038743	4	Casing to		
-			0001179	0006018	0006019	0005967	4	Strainer		
-	Fig. 4521 1½ L Only	Stud ½ x 2 Hex Nut ½	0000584	0014622	0029577	0041804	4	Casing to		
-			0001179	0006018	0006019	0005967	4	Strainer		

416 SS used on bronze casings. Nuts are brass.

† Steel Stud is ½ x 4½".

▲ Quantity is 8 for size 1½ L only.

Repair Parts

Parts for Frame (19) - 3500 R.P.M. Only													
Please Order by the Part No.													
Item No.	Name Of Part												
* 18	Ball Bearing												
22	Bearing Lock Nut												
33	Bearing Housing												
37	Bearing Cover												
40	Deflector												
66	Adjusting Nut												
69	Lock Washer												
107	Grease Shield												
170	Bearing Adapter												
213	Cap Screws												
244	Gib Key												
332	Cap Screws												
342	Set Screw												
								Previous Construction		Current Construction		Current Construction	
								0019172		0019172		0026352 & 0026415	
Item No.	For Frame (19) Part No. Name of Part							Part No.	Dwg. No.	Part No.	Dwg. No.	Part No.	Dwg. No.
* 18	Ball Bearing - Double Row							0005306	-	0005306	-	0005306	-
22	Bearing Lock Nut	0006033	10P	0006033	10P	0006033	10P						
33	Bearing Housing - D.iron	0081295	27933	0086920	28226	0081264	27872						
37	Bearing Cover - D.iron	0081293	27934	0086918	28227	0081267	119666						
40	Deflector - Steel	0083811	119911	0086915	120152	0081269	119667						
46	Coupling Key - 3/16" X 1 1/4"	0002194	-	0002194	-	0002194	-						
66	Adjusting Nut - Steel	0015292	18284	0015292	18284	0015293	18284						
69	Lock Washer	0007147	W-10	0007147	W-10	0007147	W-10						
107	Grease Shield - Neoprene	0000707	18195	N.R.	-	0000707	18195						
170	Bearing Adapter Cast Iron	0081291	27932	0086916	120153	0081265	119668						
213	Cap Screws - Item 37 To 33 (4 Req'd)	0003404	3/8" x 7/8"	0003404	3/8" x 7/8"	0003404	3/8" x 7/8"						
	Hex Nut - Item 213 (4 Req'd)	0001168	3/8"	0001168	3/8"	0001168	3/8"						
219	Cap Screws - Item 19 To 228 (4 Req'd)	0000434	1/2" x 1 1/2"	0000434	1/2" x 1 1/2"	0000434	1/2" x 1 1/2"						
	For Use With Frame 0026415	-	-	-	-	0000453	-						
242	Grease Fitting - For Item 33	0003131	1/8"	0003131	1/8"	0003131	1/8"						
244	Gib Key - For Item 170	0017839	14339	0017839	14339	0017839	14339						
250	Gasket - For Item 19 - Vapor Tight	0030664	115239	0030664	115239	0030675	115255						
256	Hex Nuts - For Item 260 (4 Req'd)	0001179	1/2"	0001179	1/2"	0001179	1/2"						
258	Hex Nuts - For Item 277 (4 Req'd)	0002638	5/8"	0002638	5/8"	0002638	5/8"						
260	Cap Screws - Item 101 To 19 (4 Req'd)	0000441	1/2" x 2 1/2"	0000441	1/2" x 2 1/2"	0000441	1/2" x 2 1/2"						
277	Cap Screws - Item 23 To 19 (4 Req'd)	0000453	5/8" x 1 3/4"	0000453	5/8" x 1 3/4"	0000453	5/8" x 1 3/4"						
332	Cap Screws - Item 33 (4 Req'd)	0006382	3/8" x 1 1/4"	0006382	3/8" x 1 1/4"	0006382	3/8" x 1 1/4"						
342	Set Screw - Full Dog - For Item 66	0006737	1/4" x 1/2"	0006737	1/4" x 1/2"	0006741	1/4" x 1/2"						

Current construction replaced previous construction in 1976.
To convert from previous to current construction, change items 33, 37, 40, and 170.
N.R. - Not Required

Item 131 - Coupling Guard (2 Req'd)									
For Frame P/N	0019174		0019172		0026352		0026415		Material
	Part No.	Dwg. No.	Part No.	Dwg. No.	Part No.	Dwg. No.	Part No.	Dwg. No.	
	0083307	120-014	0083300	120-012	0083292	120-008	0083292	120-008	Steel

NOTE: Each guard requires 6 machines screws 1/4" x 3/8" Part No. 0001494.

Repair Parts

Item 19 - Frame - Cast Iron			
Please Order by the Part No.			
For New Style "T" Motor Frames	For Old Style "U" Motor Frames	All Fig. No.	
		Part No.	Dwg. No.
56C-143-145TC	56C-182-184C	† 0019174	4940
182TC thru 256TC	213C thru 256 UC	0019172	4941
284TC-286TC	284UC-286UC	0026352	4942
324TC-326TC	324UC-326UC	0026415	4998

† For 3500 R.P.M. use Frame 0019172 and Adapter Plate 0081683.

Parts for Frame (19) - 1750 R.P.M. & 1150 R.P.M.

Item No.	Name of Part	0019174 & 0019172		0026352 & 0026415	
		Part No.	Dwg. No.	Part No.	Dwg. No.
* 18	Ball Bearing	0005304	30209	0005305	30210
33	Bearing Housing - Ductile Iron	† 0018310	23771	0013894	23914
46	Coupling Key - Square	0002194	³ / ₁₆ " x 1 ¹ / ₄ "	0002205	¹ / ₄ " x 2"
66	Adjusting Nut - Steel	0015292	18284	0015293	18284
* 169	Brg. Housing Seal - 1 ¹ / ₂ " to 1 ¹ / ₂ " Shaft For Item 33	0006934	-	0006929	-
	Brg. Housing Seal - 1 ¹ / ₄ " to 1 ¹ / ₄ " Shaft For Item 33	0006934	-	-	-
* 169A	Brg. Housing Seal - Top - For Item 33	0006952	23240	0006953	63 x 1945
170	Bearing Adapter - Cast Iron	0021021	114647	0026351	114646
202	Snap Ring - Steel	0006316	51-175	0006815	51-196
219	Cap Screw - Item 19 to Motor (4 Req'd)	▲ 0000404	³ / ₈ " x 1 ¹ / ₂ "	▲▲ 0000434	¹ / ₂ " x 1 ¹ / ₂ "
	Cap Screw - Item 19 to Motor (4 Req'd)	† 0000434	¹ / ₂ " x 1 ¹ / ₂ "	†† 0000463	⁵ / ₈ " x 2 ³ / ₄ "
242	Grease Fitting - For Item 33	0003131	¹ / ₈ "	0003131	¹ / ₈ "
244	Gib Key - For Item 170	0017839	14339	0017839	14339
247	Hex Nut - For Item 277 (4 Req'd)	0002638	⁵ / ₈ "	0002638	⁵ / ₈ "
* 250	Gasket - For Item 19 Vapor Tight Construction	0030664	115239	0030675	115255
256	Hex Nut - For Item 260 (4 Req'd)	0001179	¹ / ₂ "	0001179	¹ / ₂ "
258	Hex Nut - For Item 277 (4 Req'd)	0002638	⁵ / ₈ "	0002638	⁵ / ₈ "
260	Cap Screw - Item 101 to 19 (4 Req'd)	0000441	¹ / ₂ " x 2 ¹ / ₂ "	0000441	¹ / ₂ " x 2 ¹ / ₂ "
277	Cap Screw - Item 23 to 19 (4 Req'd)	0000453	⁵ / ₈ " x 1 ¹ / ₄ "	0000453	⁵ / ₈ " x 1 ¹ / ₄ "
332	Cap Screw - Item 33 (4 Req'd)	† 0000404	³ / ₈ " x 1 ¹ / ₂ "	0000404	³ / ₈ " x 1 ¹ / ₂ "
341	Hex Nut - For Item 332 (4 Req'd)	† 0001168	³ / ₈ "	0001168	³ / ₈ "
342	Set Screw - Full Dog - For Item 66	0006737	¹ / ₄ " x ¹ / ₂ "	0006741	³ / ₈ " x ¹ / ₂ "

▲ For Frame 0019174 Only
† For Frame 0019172 Only

▲▲ For Frame 0026352 Only
†† For Frame 0026415 Only

Parts to Connect Two or More Pieces of Column Pipe

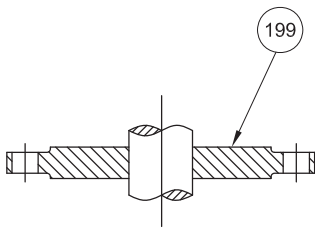
Item No.	Description	No. Req'd	3" Column		4" Column		3" Column		4" Column	
			Part No.	Part No.	Part No.	Part No.	Part No.	Part No.	Part No.	Part No.
285	Cap Screw - ¹ / ₂ " x 2 ¹ / ₄ "	4	0000440	-	0043029	-	-	-	-	-
	Cap Screw - ¹ / ₂ " x 2 ¹ / ₂ "	4	-	0000441	-	0053893	-	-	-	-
	Stud ¹ / ₂ " x 2 ³ / ₄ "	4	-	-	-	-	0041801	-	0011562	-
	Stud ¹ / ₂ " x 3"	4	-	-	-	-	-	0041742	-	0010369
288	Hex Nut - ¹ / ₂ "	††	0001179	0001179	0006018	0006018	0006019	0006019	0005967	0005967
229	Washer	†	-	0015142	-	0030940	-	0030941	-	0030940

†† Four required for use with cap screws. Eight required for use with studs.
† Four washers required for every pump. Add four each for every intermediate bearing assembly.

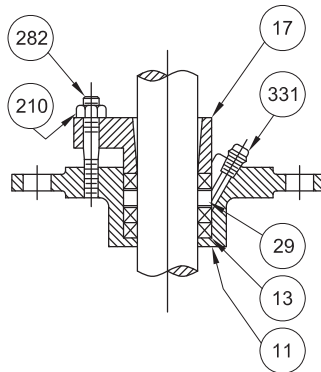
* Recommended spare parts

Typical Shaft Bearing Assemblies

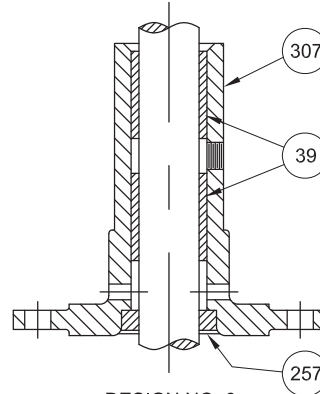
Please Order by the Part No.



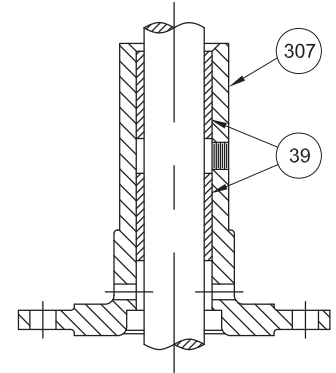
DESIGN NO. 1



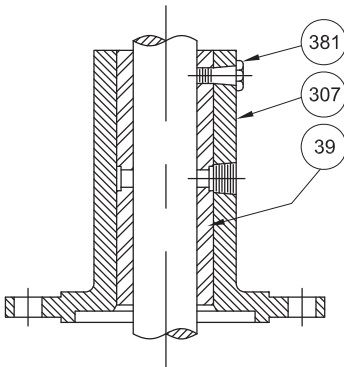
DESIGN NO. 3-3



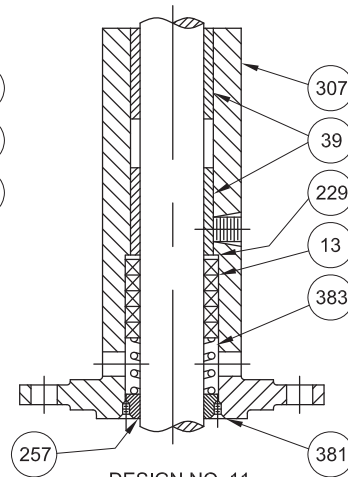
DESIGN NO. 6



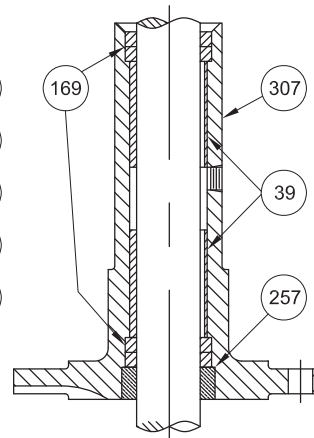
DESIGN NO. 8



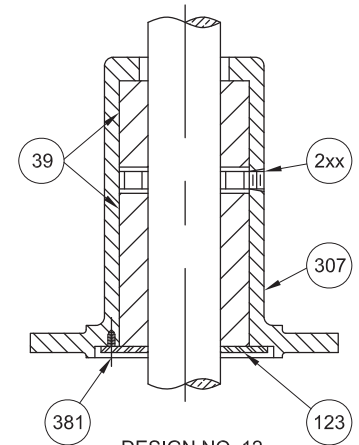
DESIGN NO. 10



DESIGN NO. 11



DESIGN NO. 13



DESIGN NO. 12

Item No.	Name of Part	Item No.	Name of Part	Item No.	Name of Part
11	Packing Box Cover	123	Bearing Cover	282	Stud
13	Packing	169	Lip Seal	307	Bearing Retainer
17	Gland	199	Top Closure	331	Grease Fitting
29	Lantern Ring	210	Hex Nut	381	Lock Screw
39	Bearing Bushing	229	Washer	383	Spring
		257	Choker Ring		

* Recommended spare parts

Repair Parts

Design 1 - Top Closure						
Item No.	Name and Description	Material	For Fig. 4501-11 1¼" Shaft		For Fig. 4521 1½" Shaft	
			Part No.	Dwg. No.	Part No.	Dwg. No.
199	Top Closure	Cast Iron	0017036	112-610	0017038	113-248
Design 3 - Packing Box						
11	Packing Box Cover	Cast Iron #8 Bronze 316 SS A-20	0015461 0015463 0049491 0035255	25038	0016591 0016593 0040672 0043982	25575
* 13	Stuff. Box Packing (3 Req'd)	GAR 8913 Teflon C-59	0030713 0057153	5/16" x 4 7/8"	0072574 0034044	5/16" x 5 11/16"
17	Stuff. Box Gland	Cast Iron #8 Bronze 316 SS A-20	0017026 0017027 0057006 0057009	112-566 112-566 118-075 118-075	0018018 0018019 0075664 0075661	114-150
* 29	Lantern Ring Half (2 Req'd)	Teflon	0076639	119-511	0080366	119-511
210	Nut for Item 282 (2 Req'd)	Steel 316 SS A-20	0000113 0006009 0006011	5/16"	0001168 0006012 0006013	
241	Gasket for Item 83	Vellutex Gar. 7705	0004553 0012464	111-969	0004553 0012464	111-969
282	Stud for Item 83 (2 Req'd)	Steel 316 SS † A-20	0000505 0078737 -	5/16" x 2 1/4"	0000521 0014623 -	3/8" x 1 1/8"
331	Grease Fitting	Steel	0003131	1/8" x 1610	0003131	1/8" x 1610

† Use 316 SS Stud on A-20 construction

Design 6 - Bottom Bearing Assembly							
Item No.	Figure No. & Shaft Size	Name and Description	Part No.	Dwg. No.	Material	▲ Bearing Housing Assy. Part No.	
307	For Fig. 4501 and 4511 1¼" Shaft	For Current Construction Bearing Retainer Only	0013888 0013890 0040055 0075055	25078	Cast Iron #8 Bronze 316 SS A-20		
307		These Housings for previous construction with 5" Bolt Circle Flange - Fig. 4501 only.					
		Bearing Retainer Only	0020215 0020216 0040052	25123	Cast Iron #8 Bronze 316 SS		
* 257		Choker Ring	0019921 0019922 0030945 0030946	112-454	Cast Iron #8 Bronze 316 SS A-20		
* 39		Bearing Bushing (2 Req'd)	0006616 0006615 0031165 0040602 † 0081331	12943	#8 Bronze Cast Iron Bab. Graph. Carbolube Bab. Graph.	0053617 0069563 0069564 0069566 0086719	
307	For Fig. 4521 1½" Shaft	Bearing Retainer Only	0015204 0015206 0032604 0053275	25245	Cast Iron #8 Bronze 316 SS A-20		
* 257		Choker Ring	0019346 0036463 0030943 0030944	113-038	Cast Iron #8 Bronze 316 SS A-20		
* 39		Bearing Bushing (2 Req'd)	0019350 0019349 0027351 0030948 † 0086497		#8 Bronze Cast Iron Bab. Graph. Carbolube Bab. Graph.	0053622 0069579 0069580 0069582 0086648	

† Spiral Groove Bearing - Used at 3500 R.P.M. only. Do Not Use Other Bearings At 3500 R.P.M.

▲ Each bearing retainer assembly consists of cast iron retainer, cast iron choker ring and with corresponding bushings of the material shown to the left of each bearing retainer assembly part no. Bearing retainer drawing 25123 - part no. 0020215 Not included.

* Recommended spare parts

Repair Parts

Design 8 - Intermediate Bearing Assembly						
Item No.	Figure No. & Shaft Size	Name and Description	Part No.	Dwg. No.	Material	▲ Bearing Housing Assy. Part No.
307	For Fig. 4501 and 4511 1 1/4" Shaft	Bearing Retainer Only	0013888 0013890 0040055 0075055	25078	Cast Iron #8 Bronze 316 SS A-20	
* 39		Bearing Bushing (2 Req'd)	0006616 0006615 0031165 0040602 † 0081331	12943	#8 Bronze Cast Iron Bab. Graph. Carbolube Bab. Graph.	0053618 0069568 0069569 0069571 0086720
307	For Fig. 4521 1 1/2" Shaft	Bearing Retainer Only	0015204 0015206 0032604 0053275	25245	Cast Iron #8 Bronze 316 SS A-20	
* 39		Bearing Bushing (2 Req'd)	0019350 0019349 0027351 0030948 † 0086497	Cast Iron 111-135	#8 Bronze Cast Iron Bab. Graph. Carbolube Bab. Graph.	0053623 0069584 0069585 0069587 0086717

† Spiral Groove Bearing - Used at 3500 R.P.M. only. Do Not Use Other Bearings At 3500 R.P.M.
 ▲ Each bearing retainer assembly consists of cast iron retainer, cast iron choker ring and with corresponding bushings of the material shown to the left of each bearing retainer assembly part no. Bearing retainer drawing 25123 - part no. 0020215 Not included.

Design 10 - Bearing Assembly							
Item No.	Figure No. & Shaft Size	Name and Description	Part No.	Dwg. No.	Material	▲ Bearing Housing Assy. Part No.	
* 307	For Fig. 4501 and 4511 1 1/4" Shaft	These housings for current construction.					
		Bearing Retainer Only	0015204 0015206 0032604 0053275	25245	Cast Iron #8 Bronze 316 SS A-20		
307		These housings for previous construction with 5" Bolt Circle - Replaces Dwg. 25161 - Fig. 4501					
		Bearing Retainer Only	0074927 0074915 0074919	26754	Cast Iron #8 Bronze 316 SS		
* 39		Bearing Bushing	0070236	119-179	Teflon	0053619	
381		Lock Screw	0039321 0005882 0075659	1/4" X 5/8"	Steel 316 SS A-20		
307	For Fig. 4521 1 1/2" Shaft	Bearing Retainer Only	0015204 0015206 0032604 0053275	25245	Cast Iron #8 Bronze 316 SS A-20		
* 39		Bearing Bushing	0070235	119-180	Teflon	0053624	
381		Lock Screw	0039321 0006882 0075659	1/4" X 5/8"	Steel 316 SS A-20		

▲▲ Each bearing retainer assembly consists of cast iron retainer bushing and steel lock screw.
 Bearing retainer part no. 0074927 Not included.

* Recommended spare parts

Repair Parts

Design 11 - Bearing Assembly						
Item No.	Figure No. & Shaft Size	Name and Description	Part No.	Dwg. No.	Material	▲ Bearing Housing Assy. Part No.
307	For Fig. 4501 and 4511 1 1/4" Dia. Shaft	Bearing Retainer Only	0047747 0047749 0075895 0075893	27133	Cast Iron #8 Bronze 316 SS A-20	
* 257		Choker Ring	0049868 0049869 0075891 0075890	118-502	Cast Iron #8 Bronze 316 SS A-20	
* 13		Packing Ring (5 Req'd)	0030713 0057153	5/16" x 1 1/4" x 1 1/8"	Garlock Teflon	
383		Spring	† 0046040 0030975	112-514	316 SS A-20	
229		Washer	† 0034583 0075887	110-496	316 SS A-20	
381		Set Screw (4 Req'd)	0006761 0075880 0075879	1/4" x 1/4"	Steel 316 SS A-20	
* 39		Bearing Bushings (2 Req'd)	0006616 0006615 0031165 0040602	12943	#8 Bronze Cast Iron Bab. Graph. Carbolube	0069574 0069575 0053620 0069577
307	For Fig. 4521 1 1/2" Dia. Shaft	Bearing Retainer Only	0047751 0047752 0075882 0075884	** 27134	Cast Iron #8 Bronze 316 SS A-20	
* 257		Choker Ring	0049866 0049867 0075889 0075888	118-503	Cast Iron #8 Bronze 316 SS A-20	
* 13		Packing Ring (5 Req'd)	0072574 0034044	5/16" x 5 3/4"	Garlock Teflon	
383		Spring	0009842 0075876	16351	Steel A-20	
229		Washer	† 0000318 0075886 0075885	110-496	Brass 316 SS A-20	
381		Set Screw (4 Req'd)	0006761 0075880 0075879	1/4" x 1/4"	Steel 316 SS A-20	
* 39		Bearing Bushing (2 Req'd)	0019350 0019349 0027351 0030948	111-135	#8 Bronze Cast Iron Bab. Graph. Carbolube	0069590 0069591 0053625 0069593

† Use with Cast Iron Bearing Retainer

▲ Each bearing retainer assembly consists of cast iron retainer and choker ring packing, spring, washer, set screws and with corresponding bushings of the material shown to the left of the bearing housing assembly part no.

* Recommended spare parts

Repair Parts

Design 12 - Bearing Assembly							
Item No.	Figure No. & Shaft Size	Name and Description	Part No.	Dwg. No.	Material	▲ Bearing Housing Assy. Part No.	
These housings for current construction.							
307	For Fig. 4501 and 4511 1 1/4" Dia. Shaft	Bearing Retainer Only	0052609 0052610 0052611 0075820	27173	Cast Iron #8 Bronze 316 SS A-20		
These housings for previous construction with 5" bolt circle Fig. 4501 only							
307		Bearing Retainer Only	0052678 0052679 0052680	27174	Cast Iron #8 Bronze 316 SS		
* 39		Bearing Bushing - Top Bearing Bushing - Bottom	0008624 0008626	115-000	Nitrile Rubber	0075992	
* 29		Lantern Ring	0027312 0032097 0075818 0075816	110-806	Cast Iron #8 Bronze 316 SS A-20		
123		Bearing Cover	0027315 0075814 0075815	112-501	Steel 316 SS A-20		
381		Set Screw (3 Req'd)	0005158 0030938	1/4" x 1/2"	Steel A-20		
307		For Fig. 4521 1 1/2" Dia. Shaft	Bearing Retainer Only	0049880 0049881 0049882 0075824	27152	Cast Iron #8 Bronze 316 SS A-20	
* 39			Bearing Bushing - Top Bearing Bushing - Bottom	0008632 0008633	115-000	Nitrile Rubber	0075857
* 29			Lantern Ring	0079019 (2 Required)	119-511	Teflon	
123	Bearing Cover		0020486 0075855 0075886	113-619	Steel 316 SS A-20		
381	Set Screw (3 Req'd)		0005158 0030938	1/4" x 1/2"	Steel A-20		

▲ Each bearing retainer assembly consists of cast iron retainer, nitrile rubber bushings, cast iron lantern ring, steel bearing cover and set screws. Bearing retainer part no. 0052678 Not included.

* Recommended spare parts

Repair Parts

Design 13 - Bearing Assembly						
Item No.	Figure No. & Shaft Size	Name and Description	Part No.	Dwg. No.	Material	▲ Bearing Housing Assy. Part No.
307	For Fig. 4501 and 4511 1 1/4" Dia. Shaft	Bearing Retainer Only	0027107 0027108 0060250 0060380	26500	Cast Iron #8 Bronze 316 SS A-20	
* 257		Choker Ring	0019921 0019922 0030945 0030946	112-454	Cast Iron #8 Bronze 316 SS A-20	
* 169		Lip Seal (4 Req'd)	0060301	1 1/4" LPD H1/L5	Rubber	
* 39		Bearing Bushing (2 Req'd)	0006616 0006615 0031165 0040602	12943	#8 Bronze Cast Iron Bab. Graph. Carbolube	0060302 0079300 0079301 0079302
307		Bearing Retainer Only	0060224 0060225 0060227 0060228	27417	Cast Iron #8 Bronze 316 SS A-20	
* 257	For Fig. 4521 1 1/2" Dia. Shaft	Choker Ring	0019346 0036463 0030943 0030944	113-038	Cast Iron #8 Bronze 316 SS A-20	
* 169		Lip Seal (4 Req'd)	0060300	1 1/2" LPD H1/L5	Rubber	
* 39		Bearing Bushing (1 of each Req'd)	0019350 & 0092325 0019349 & 0092324 0027351 & 0092326 0030948 & 0092327	111-135 and 120-756	#8 Bronze Cast Iron Bab. Graph. Carbolube	0060303 0079306 0079307 0079308

▲ Each bearing retainer assembly consists of cast iron retainer, cast iron choker ring, lip seals with corresponding bushings of the material shown to the left of each bearing retainer assembly part no.

* Item 241 - Gasket - Casing to Column Pipe

	Part No.	Dwg. No.	Material
For Cast Iron Casings	0004553	111-969	Vellutex
For Alloy and Bronze Casings	0012464		7705 Gar.

* Recommended spare parts

Repair Parts

Item 101 - Column Pipe										
Please Order by the Part No.										
3" - For Fig. 4501 and 4511							4" - For Fig. 4521			
Item No.	Pump Setting Length	Pipe Length	▲ Black Steel	Type 316 SS	A-20 SS	Dwg. No.	▲ Black Steel	Type 316 SS	A-20 SS	Dwg. No.
			Part No.	Part No.	Part No.		Part No.	Part No.	Part No.	
101	Sub Standard	3"	▲ 0031180	-	-	25162	▲ 0026847	-	-	25152
		6"	▲ 0017408	-	-	25163	▲ 0024706	-	-	25155
101	2 Ft.	11 5/8"	▲ 0026337	-	-	25173	▲ 0026337	-	-	25173
101	3 Ft. 4 Ft. 5 Ft. † 6 Ft.	23 5/8"	0019720	0027796	0076170	25080	0019710	0076154	0076162	
		35 5/8"	0019721	0027797	0076169		0019711	0076153	0076161	
		47 5/8"	0019722	0027798	0076168		0019712	0076152	0076160	
		59 5/8"	0019723	0027799	0076167		0019713	0075151	0076159	
101 A - Top	7 Ft.	35 5/8"	0019721	0027797	0076169		0019711	0076153	0076161	
101 - Bottom		35 5/8"	0019721	0027797	0076169		0019711	0076153	0076161	
101 A - Top	8 Ft.	47 5/8"	0019722	0027798	0076168		0019712	0076152	0076160	
101 - Bottom		35 5/8"	0019721	0027797	0076169		0019711	0075153	0076161	
101 A - Top	† 9 Ft.	59 5/8"	0019723	0027799	0076167		0019713	0075151	0076159	
101 - Bottom		35 5/8"	0019721	0027797	0076169		0019711	0075153	0076161	
101 A - Top	† 10 Ft.	59 5/8"	0019723	0027799	0076167		0019713	0076151	0076159	25098
101 - Bottom		47 5/8"	0019722	0027798	0076168		0019712	0076152	0076160	
101 A - Top	† 11 Ft.	59 5/8"	0019723	0027799	0076167		0019713	0076151	0076159	
101 - Bottom		59 5/8"	0019723	0027799	0076167		0019713	0076151	0076159	
101 A - Top	† 12 Ft.	59 5/8"	0019723	0027799	0076167		0019713	0076151	0076159	
101 B - Inter.		35 5/8"	0019721	0027797	0076169		0019711	0076153	0076161	
101 - Bottom		35 5/8"	0019721	0027797	0076169	0019711	0076153	0076161		
101 A - Top	† 13 Ft.	59 5/8"	0019723	0027799	0076167	0019713	0076151	0076159		
101 B - Inter.		47 5/8"	0019722	0027798	0076168	0019712	0076152	0076160		
101 - Bottom		35 5/8"	0019721	0027797	0076169	0019711	0076153	0076161		
101 A - Top	† 14 Ft.	59 5/8"	0019723	0027799	0076167	0019713	0076151	0076159		
101 B - Inter.		59 5/8"	0019723	0027799	0076167	0019713	0076151	0076159		
101 - Bottom		35 5/8"	0019721	0027797	0076169	0019711	0076153	0076161		
101 A - Top	† 15 Ft.	59 5/8"	0019723	0027799	0076167	0019713	0076151	0076159		
101 B - Inter.		59 5/8"	0019723	0027799	0076167	0019713	0076151	0076159		
101 - Bottom		47 5/8"	0019722	0027798	0076169	0019712	0076152	0076160		
For Fig. 4511 Column Pipe on four foot bearing centers substitute the following:										
101 A - Top	6 Ft.	35 5/8"	0019721	0027797	0076169	25080				
101 - Bottom		23 5/8"	0019720	0027796	0076170					
101 A - Top	9 Ft.	47 5/8"	0019722	0027798	0076168					
101 - Bottom		47 5/8"	0019722	0027798	0076168					
101 A - Top	10 Ft.	35 5/8"	0019721	0027797	0076169					
101 B - Inter.		35 5/8"	0019721	0027797	0076169					
101 - Bottom		35 5/8"	0019721	0027797	0076169					
101 A - Top	11 Ft.	47 5/8"	0019722	0027798	0076168					
101 B - Inter.		47 5/8"	0019722	0027798	0076168					
101 - Bottom		23 5/8"	0019720	0027796	0076170					
101 A - Top	12 Ft.	47 5/8"	0019722	0027798	0076168					
101 B - Inter.		47 5/8"	0019722	0027798	0076168					
101 - Bottom		35 5/8"	0019721	0027797	0076169					
101 A - Top	13 Ft.	47 5/8"	0019722	0027798	0076168					
101 B - Inter.		47 5/8"	0019722	0027798	0076168					
101 - Bottom		47 5/8"	0019722	0027798	0076168					
101 A - Top	14 Ft.	47 5/8"	0019722	0027798	0076168					
101 B - Inter.		47 5/8"	0019722	0027798	0076168					
101 C - Inter.		35 5/8"	0019721	0027797	0076169					
101 - Bottom		23 5/8"	0019720	0027796	0076170					
101 A - Top	15 Ft.	47 5/8"	0019722	0027798	0076168					
101 B - Inter.		47 5/8"	0019722	0027798	0076168					
101 C - Inter.		35 5/8"	0019721	0027797	0076169					
101 - Bottom		35 5/8"	0019721	0027797	0076169					

▲ Cast Iron

* Recommended spare parts



PUMPS & SYSTEMS

SECTION 95
PAGE 161
DATE 7/08

Repair Parts

Parts to Connect Flanged Casing to Flanged Discharge Elbow †

Please Order by the Part No.

Item No.	Name and Description	No. Req'd	Steel Part No.	316 SS Part No.	A-20 SS Part No.	Everdure Part No.	Pump Size	Disch. Pipe Size
265	Cap Screw ½ x 1¾	4	-	0045995	0045976	-	1, 1 S	1", 1½"
268	Hex Nut ½	4	-	0006018	0006019	-	1½, 1½ S, 1½ M, 1½ L	1½", 2", 2½", 3"
265	Cap Screw ¾ x 2	4	-	0045956	0045977	-	2 S, 2 M	2", 2½", 3"
268	Hex Nut ¾	4	-	0006022	0006026	-		
265	Cap Screw ¾" x 2¼"	4	0000459	0045957	0045978	0045941	3 S, 3 MD	3" - 4"
268	Hex Nut ¾"	4	0002638	0006025	0006026	0005968		
265	Cap Screw ¾ x 2¼	2	0000453	0045956	0045977	0045940	4 S, 4 MD	4" - 5" - 6"
267	Cap Screw ¾ x 2½	6	0000461	0045958	0045979	0045942		
268	Hex Nut ¾"	6	0002638	0006025	0006026	0005968		
265	Cap Screw ¾ x 2½	2	0000472	0076698	0076699	0000462	5 MD, 5 MSD	5" - 6"
267	Cap Screw ¾ x 2¾	6	0006814	0045959	0045980	0045943	6 MD, 6 MLD	6" - 8"
268	Hex Nut ¾"	6	0002710	0045962	0030467	0005969		

† NOTE: Above items not required on cast iron or bronze sizes 2½" or smaller

▲ Everdure used on bronze casings. Hex nuts are brass.

* Item 336 - Gasket for Discharge Flange			
(Not Required on cast iron or bronze sizes 2½" or smaller)			
Pump Size	Rubber	7705 Gar.	Dwg. No.
1, 1 S	-	0045949	113-646
1½, 1½ S, 1½ M, 1½ L	-	0035538	
2 S, 2 M	-	0035541	
3 S, 3 MD	0007200	0033438	
4 S, 4 MD	0007201	0033439	
5 MD, 5 MSD	0007202	0032626	
6 MD, 6 MLD	0007203	0045951	

* Item 254 - Discharge Pipe Gaskets			
For Vapor Proof Construction Only			
Pipe Size	Part No.	Material	Dwg. No.
1"	0015178	Rubber	18437
1½"	0015179		
2"	0015180		
2½"	0015181		
3"	0015182		
4"	0015183		
5"	0015184		
6"	0015185		
8"	0015186		

Rubber used on cast iron or bronze casings.

7705 Garlock used on alloy casings.

Parts to Connect Discharge Pipe to Discharge Elbow ††

316 SS								
Disch. Pipe Size	Flange-316 SS Part No.	Gasket-7705 Gar. Part No.	Cap Screw - 316 SS			Hex Nut - 316 SS		
			Size	Part No.	No. Req'd	Size	Part No.	No. Req'd
1"	0030050	0045949	½" x 1½"	0045954	4	½"	0006018	4
1½"	0030051	0035538	½" x 1¾"	0045955	4	½"	0006018	4
2"	0030052	0035541	¾" x 2"	0045956	4	¾"	0006022	4
2½"	0030053	0034426	¾" x 2"	0045956	4	¾"	0006022	4
▲▲ 3"	0030054	0033438	¾" x 2¼"	0045957	4	¾"	0006022	4
A-20 SS								
Pipe Size	Flange-A-20 SS Part No.	Gasket-7705 Gar. Part No.	Cap Screw - A-20 SS			Hex Nut - A-20 SS		
			Size	Part No.	No. Req'd	Size	Part No.	No. Req'd
1"	0030192	0045949	½" x 1½"	0045975	4	½"	0006019	4
1½"	0030193	0035538	½" x 1¾"	0045976	4	½"	0006019	4
2"	0030194	0035541	¾" x 2"	0045977	4	¾"	0006026	4
2½"	0030195	0034426	¾" x 2"	0045977	4	¾"	0006026	4
▲▲ 3"	0030196	0033438	¾" x 2¼"	0045978	4	¾"	0006026	4

†† Not required with discharge pipe 4" or larger and all cast iron or bronze casings

▲▲ Not required with size 3MD

Repair Parts

Item 294 - Discharge Pipe Nut (2 Each Req'd)					Item 295 - Discharge Flange			
Disch. Pipe Size	Steel Part No.	316 SS Part No.	A-20 SS Part No.	#8 Bronze Part No.	Cast Iron Part No.	316 SS Part No.	A-20 SS Part No.	#8 Bronze Part No.
1"	0006044	0030166	0030174	-	† 0005742	0030050	0030192	† 0059934
1½"	0006046	0030167	0030175	-	† 0005744	0030051	0030193	† -
2"	0006047	0030168	0030176	-	† 0005745	0030052	0030194	† 0052028
2½"	0006048	0030169	0030177	-	† 0005746	0030053	0030195	† -
3"	0026273	0030170	0030178	0102816	0026031	0030054	0030196	0010284
4"	0018535	0030171	0030179	0102818	0026032	0030055	0030197	0010286
5"	0018685	0030172	0030180	0102820	0026033	0030056	0030198	0010288
6"	0020932	0030173	0030181	0102822	0026034	0030057	0030199	0010290
8"	0026275	0063576	0063577	0102824	0026035	0030058	0045973	0010292

† 1" through 2½" Pipe in bronze and cast iron furnished with pipe couplings.

Item 105 - Discharge Elbow - Threaded					Discharge Elbow - Flanged	
Pump Size	Disch. Pipe Size	For Cast Iron Casing			316 SS	A-20 SS
		Elbow	Pipe Nipple	Bushing	Part No.	Part No.
1"	1"	0005876	-	-	0029942	0030182
	1½"	0005892	-	-	0029943	0030183
1 S	1"	-	-	-	0029942	0030182
	1"	-	-	-	0029943	0030183
1¼ S	1½"	0005893	-	-	0029943	0030183
	2"	0005814	0001012	-	-	-
1½, 1½ S 1½ M, 1½ L	1½"	0005878	-	-	0053620	0053274
	2"	0005895	-	-	0051060	0063626
	2½"	0005817	0001019	-	0045791	0063627
2 S, 2 M	3"	0005820	0001019	0005704	0094357	-
	2"	0005879	-	-	0029944	0030184
	2½"	0005818	0001027	-	0029945	0030185
	3"	0005820	0001027	-	0063623	0063628
2½	4"	0005823	0001027	0006809	-	-
	2½"	0005880	-	-	-	-
	3"	0005821	0006334	-	-	-
2½	4"	0005823	0006334	0005605	-	-

Repair Parts

Discharge Elbow - Combination (Flanged to Threaded)

Please Order by the Part No.

Pump Size	Disch. Pipe Size	Cast Iron Part No.	316 SS Part No.	A-20 SS Part No.	#8 Bronze Part No.	Dwg. No.
3 S, 3 MD	3"	0007167	0063578	0063580	0013144	112-858
	4"	0006696	0063582	0063584	0102858	112-854
4 S, 4 MD	4"	0007169	0063586	0063588	0102830	112-850
	5"	0006811	0014917	0063590	0102832	112-845
	6"	0007486	0063592	0063594	0102834	26200
5 MD, 5 MSD	5"	0006813	0063596	0063598	0102836	112-812
	6"	0007171	0063600	0063602	0102838	17414
6 MD, 6 MLD	6"	0007186	0063604	0063606	0102840	15970
	8"	0007188	0063608	0063610	0102842	26181

Shaft Trim Parts

Fig. No.	Item 32 Key Part No.	Item 270 Washer Part No.	* Item 24 Nut Part No.	Item 70 Shaft Coupling for Setting over 10 Ft. Part No.
4501 For 1¼" Shafts	0065013	<u>For 1045 Stl., 410 S.S. and 304 S.S. 416 S.S. Shafts</u> 0065019	0005214	<u>For 1045 Shaft</u> 0018022
	0065013	<u>For 316 S.S. Shafts</u> 0065019	0029644	<u>For 410 and 416 Shaft</u> 0068930
	012456	<u>For A-20 Shafts</u> 0012469	0012417	<u>For 304 S.S. and 316 S.S. Shafts</u> 0032042 <u>For A-20 Shafts</u> 0075700
4511 For 1¼" Shafts	0030942	<u>For 1045 Stl., 410 S.S. and 304 S.S. 416 S.S. Shafts</u> 0065020	0005246	<u>For 1045 Shaft</u> 0018022
	0030942	<u>For 316 S.S. Shafts</u> 0065020	0029645	<u>For 410 and 416 Shaft</u> 0068930
	0012463	<u>For A-20 Shafts</u> 0012476	0029645	<u>For 304 S.S. and 316 S.S. Shafts</u> 0032042 <u>For A-20 Shafts</u> 0075700
4521 For 1½" Shafts	0065014	<u>For 1045 Stl., 410 S.S. and 304 S.S. 416 S.S. Shafts</u> 0065021	0005246	<u>For 1045 Shaft</u> 0018023
	0065014	<u>For 316 S.S. Shafts</u> 0065021	0029645	<u>For 410 and 416 Shaft</u> 0032039
	0012557	<u>For A-20 Shafts</u> 0012558	0029645	<u>For 304 S.S. and 316 S.S. Shafts</u> 0068931 <u>For A-20 Shafts</u> 0075701

* Recommended spare parts

Repair Parts

Item 6 - Shaft						
Please Order by the Part No.						
▲ Shaft with Trim - For Fig. 4501 1 1/4" Dia. x 1/8" Taper						
Item No.	Pump Setting	1045 Steel Part No.	Type 416 SS Part No.	Type 316 SS Part No.	A-20 SS Part No.	Shaft Dwg. No.
For 56C - 143T and 145T New Frames and 182C and 184C Old Motor Frames.						
6	2 Ft.	0069618	0069632	0069660	0075702	25527
	3 Ft.	0069619	0069633	0069661	0075703	
	4 Ft.	0069620	0069634	0069662	0075704	
	5 Ft.	0069621	0069635	0069663	0075705	
	6 Ft.	0069622	0069636	0069664	0075706	
	7 Ft.	0069623	0069637	0069665	0075707	
	8 Ft.	0069624	0069638	0069666	0075708	
	9 Ft.	0069625	0069639	0069667	0075709	
	10 Ft.	0069626	0069640	0069668	0075710	
	6A - Top 6C - Bottom	11 Ft.	0069627	0069641	0069669	
6A - Top 6C - Bottom	12 Ft.	0069628	0069642	0069670	0075712	113243 112584
6A - Top 6C - Bottom	13 Ft.	0069629	0069643	0069671	0075713	113243 112584
6A - Top 6C - Bottom	14 Ft.	0069630	0069644	0069672	0075714	113243 112584
6A - Top 6C - Bottom	15 Ft.	0069631	0069645	0069673	0075715	113243 112584
For 182T thru 215T New Frames and 213C and 215C Old Motor Frames.						
6	2 Ft.	0069674	0069688	0069716	0075716	25527
	3 Ft.	0069675	0069689	0069717	0075717	
	4 Ft.	0069676	0069690	0069718	0075718	
	5 Ft.	0069677	0069691	0069719	0075719	
	6 Ft.	0069678	0069692	0069720	0075720	
	7 Ft.	0069679	0069693	0069721	0075721	
	8 Ft.	0069680	0069694	0069722	0075722	
	9 Ft.	0069681	0069695	0069723	0075723	
	10 Ft.	0069682	0069696	0069724	0075724	
	6A - Top 6C - Bottom	11 Ft.	0069683	0069697	0069725	
6A - Top 6C - Bottom	12 Ft.	0069684	0069698	0069726	0075726	113243 112584
6A - Top 6C - Bottom	13 Ft.	0069685	0069699	0069727	0075727	113243 112584
6A - Top 6C - Bottom	14 Ft.	0069686	0069700	0069728	0075728	113243 112584
6A - Top 6C - Bottom	15 Ft.	0069687	0069701	0069729	0075729	113243 112584

When ordering shafts, be sure to furnish pump serial number from name plate.
 ▲ Includes shaft, impeller key, nut and washer. shafts over 10 ft. include shaft coupling.
 NOTE: Type 416 SS replaces 410 SS
 304 SS shaft no longer furnished. Use 316 SS.

Repair Parts

Item 6 - Shaft						
Please Order by the Part No.						
▲ Shaft with Trim - For Fig. 4511 1¼" Dia. x 1" Taper						
Item No.	Pump Setting	1045 Steel Part No.	Type 416 SS Part No.	Type 316 SS Part No.	A-20 SS Part No.	Shaft Dwg. No.
For 56C - 143T and 145T New Frames and 182C and 184C Old Motor Frames.						
6	2 Ft.	0069730	0069744	0069772	0075730	25278
	3 Ft.	0069731	0069745	0069773	0075731	
	4 Ft.	0069732	0069746	0069774	0075732	
	5 Ft.	0069733	0069747	0069775	0075733	
	6 Ft.	0069734	0069748	0069776	0075734	
	7 Ft.	0069735	0069749	0069777	0075735	
	8 Ft.	0069736	0069750	0069778	0075736	
	9 Ft.	0069737	0069751	0069779	0075737	
	10 Ft.	0069738	0069752	0069780	0075738	
	6A - Top 6C - Bottom	11 Ft.	0069739	0069753	0069781	
6A - Top 6C - Bottom	12 Ft.	0069740	0069754	0069782	0075740	113243 112626
6A - Top 6C - Bottom	13 Ft.	0069741	0069755	0069783	0075741	113243 112626
6A - Top 6C - Bottom	14 Ft.	0069742	0069756	0069784	0075742	113243 112626
6A - Top 6C - Bottom	15 Ft.	0069743	0069757	0069785	0075743	113243 112626
For 182T thru 215T New Frames and 213C and 215C Old Motor Frames.						
6	2 Ft.	0069786	0069800	0069828	0075744	25278
	3 Ft.	0069787	0069801	0069829	0075745	
	4 Ft.	0069788	0069802	0069830	0075746	
	5 Ft.	0069789	0069803	0069831	0075747	
	6 Ft.	0069790	0069804	0069832	0075748	
	7 Ft.	0069791	0069805	0069833	0075749	
	8 Ft.	0069792	0069806	0069834	0075750	
	9 Ft.	0069793	0069807	0069835	0075751	
	10 Ft.	0069794	0069808	0069836	0075752	
	6A - Top 6C - Bottom	11 Ft.	0069795	0069809	0069837	
6A - Top 6C - Bottom	12 Ft.	0069796	0069810	0069838	0075754	113243 112626
6A - Top 6C - Bottom	13 Ft.	0069797	0069811	0069839	0075755	113243 112626
6A - Top 6C - Bottom	14 Ft.	0069798	0069812	0069840	0075756	113243 112626
6A - Top 6C - Bottom	15 Ft.	0069799	0069813	0069841	0075757	113243 112626

When ordering shafts, be sure to furnish pump serial number from name plate.

▲ Includes shaft, impeller key, nut and washer. Shafts over 10 ft. Include shaft coupling.

Note: Type 416 SS replaces 410 SS

304 SS shaft no longer furnished. Use 316 SS.

Repair Parts

Item 6 - Shaft						
Please Order by the Part No.						
▲ Shaft with Trim - For Fig. 4511 1¼" Dia. x 1" Taper						
Item No.	Pump Setting	1045 Steel Part No.	Type 416 SS Part No.	Type 316 SS Part No.	A-20 SS Part No.	Shaft Dwg. No.
For 254T and 256T New Frames and 254UC and 256UC Old Motor Frames.						
6	2 Ft.	0069842	0069856	0089884	0075758	25278
	3 Ft.	0069843	0069857	0069885	0075759	
	4 Ft.	0069844	0069858	0069886	0075760	
	5 Ft.	0069845	0069859	0069887	0075761	
	6 Ft.	0069846	0069860	0069888	0075762	
	7 Ft.	0069847	0069861	0069889	0075763	
	8 Ft.	0069848	0069862	0069890	0075764	
	9 Ft.	0069849	0069863	0069891	0075765	
	10 Ft.	0069850	0069864	0069892	0075766	
6A - Top 6C - Bottom	11 Ft.	0069851	0069865	0069893	0075767	113243 112584
6A - Top 6C - Bottom	12 Ft.	0069852	0069866	0069894	0075768	113243 112584
6A - Top 6C - Bottom	13 Ft.	0069853	0069867	0069895	0075769	113243 112584
6A - Top 6C - Bottom	14 Ft.	0069854	0069868	0069896	0075770	113243 112584
6A - Top 6C - Bottom	15 Ft.	0069855	0069869	0069897	0075771	113243 112584
▲ Shaft with Trim - For Fig. 4521 1½" Dia. x 1¼" Taper						
For 182T thru 215T New Frames and 213C and 215C Old Motor Frames.						
6	2 Ft.	0069898	0069912	0069940	0075772	25407
	3 Ft.	0069899	0069913	0069941	0075773	
	4 Ft.	0069900	0069914	0069942	0075774	
	5 Ft.	0069901	0069915	0069943	0075775	
	6 Ft.	0069902	0069916	0069944	0075776	
	7 Ft.	0069903	0069917	0069945	0075777	
	8 Ft.	0069904	0069918	0069946	0075778	
	9 Ft.	0069905	0069919	0069947	0075779	
	10 Ft.	0069906	0069920	0069948	0075780	
6A - Top 6C - Bottom	11 Ft.	0069907	0069921	0069949	0075781	113955 113305
6A - Top 6C - Bottom	12 Ft.	0069908	0069922	0069950	0075782	113955 113305
6A - Top 6C - Bottom	13 Ft.	0069909	0069923	0069951	0075783	113955 113305
6A - Top 6C - Bottom	14 Ft.	0069910	0069924	0069952	0075784	113955 113305
6A - Top 6C - Bottom	15 Ft.	0069911	0069925	0069953	0075785	113955 113305

When ordering shafts, be sure to furnish pump serial number from name plate.

▲ Includes shaft, impeller key, nut and washer. Shafts over 10 ft. Include shaft coupling.

Note: Type 416 SS replaces 410 SS

304 SS shaft no longer furnished. Use 316 SS.

Repair Parts

Item 6 - Shaft						
Please Order by the Part No.						
▲ Shaft with Trim - For Fig. 4521 1½" Dia. x 1¼" Taper						
Item No.	Pump Setting	1045 Steel Part No.	Type 416 SS Part No.	Type 316 SS Part No.	A-20 SS Part No.	Shaft Dwg. No.
For 254T and 256T New Frames and 254UC and 256UC Old Motor Frames.						
6	2 Ft.	0069954	0069968	0069996	0075786	25407
	3 Ft.	0069955	0069969	0069997	0075787	
	4 Ft.	0069956	0069970	0069998	0075788	
	5 Ft.	0069957	0069971	0069999	0075789	
	6 Ft.	0069958	0069972	0070000	0075790	
	7 Ft.	0069959	0069973	0070001	0075791	
	8 Ft.	0069960	0069974	0070002	0075792	
	9 Ft.	0069961	0069975	0070003	0075793	
	10 Ft.	0069962	0069976	0070004	0075794	
	6A - Top 6C - Bottom	11 Ft.	0069963	0069977	0070005	
6A - Top 6C - Bottom	12 Ft.	0069964	0069978	0070006	0075796	113955 113305
6A - Top 6C - Bottom	13 Ft.	0069965	0069979	0070007	0075797	113955 113305
6A - Top 6C - Bottom	14 Ft.	0069966	0069980	0070008	0075798	113955 113305
6A - Top 6C - Bottom	15 Ft.	0069967	0069981	0070009	0075799	113955 113305
For 284T thru 286T New Frames and 284UC and 286UC Old Motor Frames.						
6	2 Ft.	0070010	0070024	0070052	0075800	25529
	3 Ft.	0070011	0070025	0070053	0075801	
	4 Ft.	0070012	0070026	0070054	0075802	
	5 Ft.	0070013	0070027	0070055	0075803	
	6 Ft.	0070014	0070028	0070056	0075804	
	7 Ft.	0070015	0070029	0070057	0075805	
	8 Ft.	0070016	0070030	0070058	0075806	
	9 Ft.	0070017	0070031	0070059	0075807	
	10 Ft.	0070018	0070032	0070060	0075808	
	6A - Top 6C - Bottom	11 Ft.	0070019	0070033	0070061	
6A - Top 6C - Bottom	12 Ft.	0070020	0070034	0070062	0075810	114405 113305
6A - Top 6C - Bottom	13 Ft.	0070021	0070035	0070063	0075811	114405 113305
6A - Top 6C - Bottom	14 Ft.	0070022	0070036	0070064	0075812	114405 113305
6A - Top 6C - Bottom	15 Ft.	0070023	0070037	0070065	0075813	114405 113305

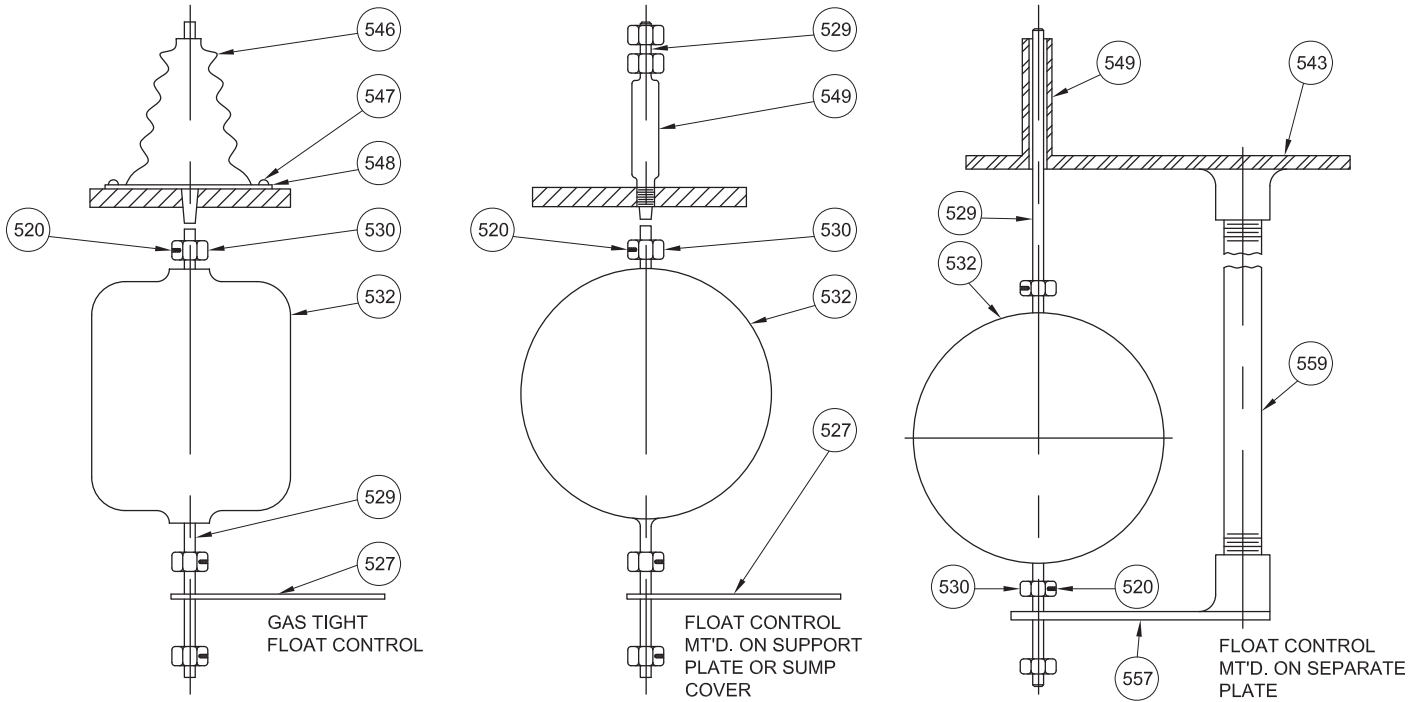
When ordering shafts, be sure to furnish pump serial number from name plate.

▲ Includes shaft, impeller key, nut and washer. Shafts over 10 ft. Include shaft coupling.

Note: Type 416 SS replaces 410 SS

304 SS shaft no longer furnished. Use 316 SS.

Repair Parts



Item No.	Name of Part	Item No.	Name of Part	Item No.	Name of Part
520	Set Screw	532	Float	548	Washer
527	Float Rod Bottom Guide	543	Cover Plate	549	Float Rod Guide Tube
529	Float Rod	546	Bellows	557	Float Guide
530	Float Rod Collars	547	Machine Screw	559	Guide Pipe

Float Accessories						
† Item 529 - Float Rod Only						
Pump Setting	Rod Length	Fiberglass Part No.	Brass Part No.	316 SS Part No.	A-20 SS Part No.	Drawing No.
2'	36"	0075489	0020620	0020611	0102847	114-576
3'	48"	0075490	0020621	0020612	0102848	
4'	60"	0075491	0020622	0020613	0102849	
5'	72"	0075492	0020623	0020614	0102850	
6'	84"	0075493	0020624	0020615	0102851	
7'	96"	0075494	0020625	0020616	0102852	
8'	108"	0075495	0020626	0020617	0102853	
9'	120"	0075496	0020627	0020618	0102854	
10'	132"	0075497	0020628	0020619	0102855	
11'	144"	0102866	0026279	0102861	0102856	
12'	156"	0102867	N.A.	0102862	0102857	
13'	168"	0102868	N.A.	0102863	0102858	
14'	180"	0102869	N.A.	0102864	0102859	
15'	192"	0102870	N.A.	0102865	0102860	

† For float rod assemblies with collars refer to section 49

Repair Parts

† Item 530 - Collar with Set Screw (5 Req'd)			
Drawing No.	Brass Part No.	316 SS Part No.	A-20 SS Part No.
18087	0006382	0102992	0102993

Item 532 - Float - See Controls Section (Section 49)
--

Item 527 - Float Rod Bottom Guide			
Drawing No.	Steel Part No.	316 SS Part No.	A-20 SS Part No.
18914	0021176	0032073	0102844

Item 549 - Guide Tube	
Drawing No.	Steel Part No.
114-650	0024230

Item 557 - Float Guide - For Use with Float Cover Plate				
Drawing No.	Steel Part No.	Brass Part No.	316 SS Part No.	A-20 SS Part No.
114-611	0024191	0075905	0075902	0059936

Item 546 - Bellows		
Drawing No.	Part No.	Material
113-978	0026138	Rubber

Item 548 - Washer	
Drawing No.	Steel Part No.
114-549	0026139

Item 547 - Machine Screws (3 Req'd)	
Size	Steel Part No.
¼ x ¾	0001494

† For rod assemblies with collars refer to Section 49