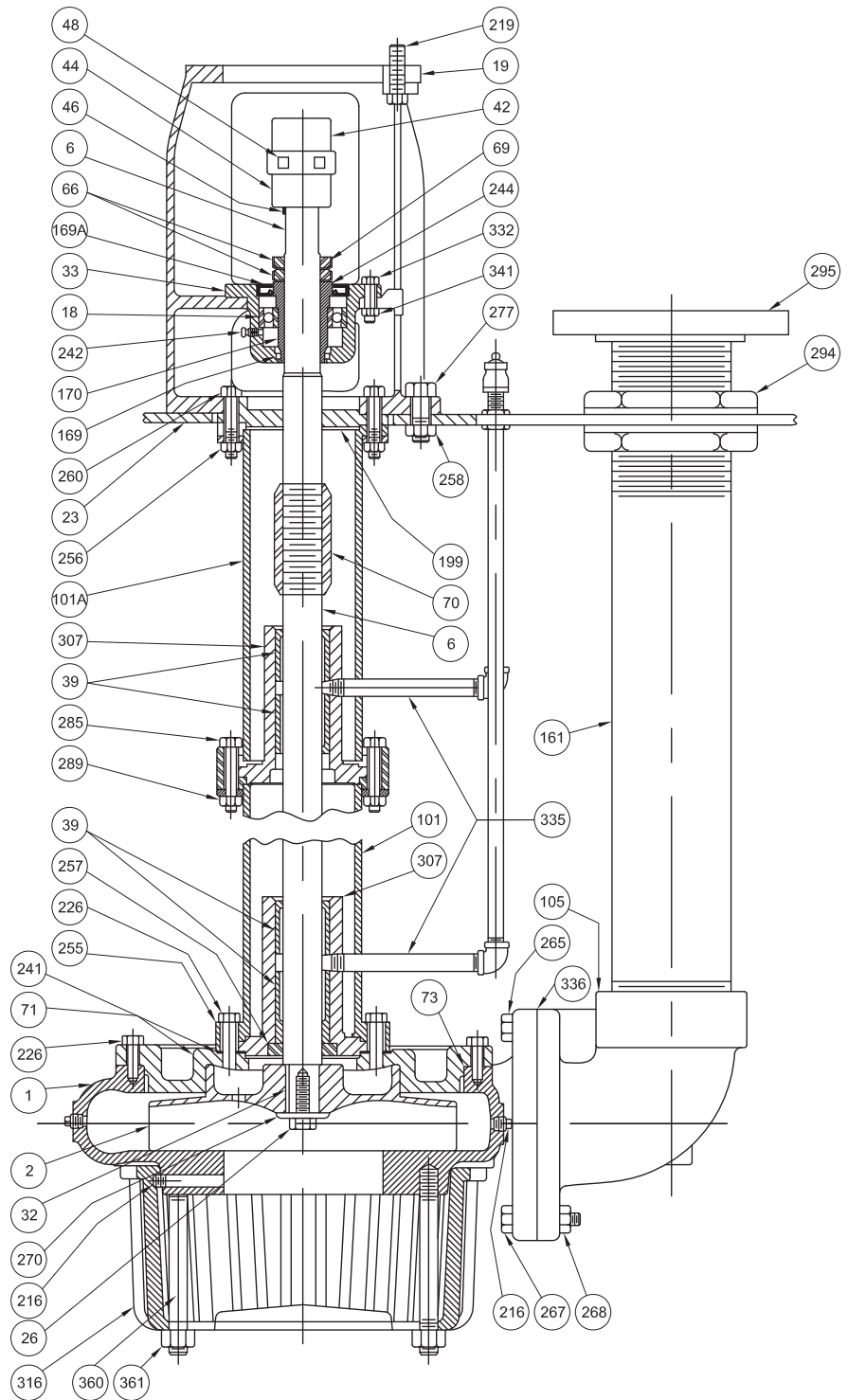


Item No.	Name Of Part
1	Casing
2	Impeller
6	Shaft
* 18	Ball Bearing
19	Frame
23	Split Cover Plate
* 26	Impeller Screw
32	Impeller Key
33	Bearing Housing
* 39	Bearing Bushing
42	Coupling Half - Driver
44	Coupling Half - Pump
46	Coupling Key
48	Coupling Spider
66	Shaft Adjusting Nut
69	Lock Washer
70	Shaft Coupling
71	Casing Adapter
* 73	Gasket
101	Column Pipe
101A	Column Pipe - Top
105	Discharge Elbow
161	Discharge Pipe
169	Lower Seal
169A	Seal-Top
170	Bearing Adapter
199	Top Closure
212	Cap Screw
216	Pipe Plug
219	Cap Screw
226	Cap Screw
* 241	Gasket
242	Grease Fitting
244	Bearing Adapter Key
250	Frame Gasket
254	Pipe Nut Gasket
255	Washer
256	Hex Nut
* 257	Choker Ring
258	Hex Nut
260	Cap Screw
265	Cap Screw
267	Cap Screw
268	Hex Nut
270	Impeller Washer
277	Cap Screw
285	Cap Screw
289	Hex Nut
294	Pipe Nut
295	Discharge Flange
307	Bearing Retainer
316	Strainer
332	Cap Screw
335	Lube Pipe Assembly
336	Gasket
341	Hex Nut
360	Stud
361	Hex Nut

* Recommended spare parts



WARNING:
 CANCER AND REPRODUCTIVE HARM -
 WWW.P65WARNINGS.CA.GOV

Repair Parts

Liquid End Parts

Please Order by the Part No.

Item 1 - Casing with Plugs, Studs, and Nuts						Item 2 - Impeller			
Fig. No.	Size	Cast Iron Part No. †	316 SS Part No.	A-20 SS Prd. No.	Dwg. No.	Cast Iron Part No.	316 SS Part No.	A-20 SS Prd. No.	Dwg. No.
4565	4 x 4 x 12	0102955	0102961	0102966	41571	0081117	0102949	0102951	27921
	6 x 4 x 12	0102956	N/A	N/A	41460	0055609	N/A	N/A	27285
	6 x 6 x 12	0102957	0102962	0102967	41462	0055605	0102947	0102948	27283
	8 x 6 x 12	0102958	0102963	0102968	41464	0055611	0102939	0102910	33664
4566-68	4 x 4 x 12	0102955	0102961	0102966	41571	0081086	0081090	0081092	27894
	6 x 4 x 12	0102956	N/A	N/A	41460	0052155	N/A	N/A	27158
	6 x 6 x 12	0102957	0102962	0102967	41462	0052842	0077102	0077104	27176
	8 x 6 x 12	0102958	0102963	0102968	41464	0054399	0077110	0077112	33642
	8 x 8 x 12	0102959	0102964	0102969	41339	0045405	0075618	0075599	33506
	10 x 10 x 12	0102960	0102965	0102970	41340	0052147	0077074	0077076	27170

† NOTE: Cast Iron Casing assemblies include pipe plugs.

Item 316 - Strainer					Strainer Adapter for Size 4 x 4 x 12 ONLY			
Pump Size	Cast Iron Part No.	316 SS Part No.	A-20 SS Prd. No.	Dwg. No.	Steel Part No.	316 SS Part No.	A-20 SS Prd. No.	Dwg. No.
4 x 4 x 12 ONLY	0004191	0033031	0052458	32361 - Top 32360 - Bottom	0044317	0075944	0075943	118-235
	0004683	0033033	0052457					
All Except 4 x 4 x 12	0054146	0092107	0102941	41354	Item * 73 - Casing Gasket			
					Vell Part No.	7705 Gar. Part No.	Dwg. No.	
					0043981	0078679	118-080	

Item No.	Size Used	Part Name & Size	Steel Part No.	316 SS Part No.	A-20 SS Part No.	No. Req'd	Where Used
-	4 x 4 x 12	Cap Screw 5/8 x 1 1/4	0000453	0045956	0045977	4	Strainer Adapter to Casing
277	All Sizes	Cap Screw 1/2 x 1 1/4	0000432	-	-	8	Casing Adapter to Casing
		Stud 1/2 x 1 1/4	-	0014589	0029578	8	
		Hex Nut 1/2	-	0006018	0006019	8	
360 361	4 x 4 x 12	Stud 5/8 x 4 1/4	0000639	0102937	0102938	4	Strainer to Strainer Adapter
		Hex Nut 5/8	0002638	0006022	0006023	8	
360 361	6 x 4 x 12 6 x 6 x 12	Stud 3/4 x 4 1/2	0000653	0102919	0102920	4	Strainer to Casing
		Hex Nut 3/4	0002710	0045962	0030467	4	
360 361	8 x 6 x 12 8 x 8 x 12	Stud 3/4 x 5 1/2	0000655	0102971	0102972	4	Strainer to Casing
		Hex Nut 3/4	0002710	0045962	0030467	4	
360 361	10 x 10 x 12	Stud 7/8 x 6	0041809	0102935	0102936	4	Strainer to Casing
		Hex Nut 7/8	0005983	0045963	0045983	4	

Item No.	Name & Description	No. Req'd.	Steel Part No.	316 SS Part No.	A-20 SS Part No.	Pump Size	Disch. Pipe Size
265	Cap Screw - 5/8 x 1 1/4	2	0000453	0045956	0045977	4 x 4 x 12 6 x 4 x 12	4" - 6"
267	Cap Screw - 5/8 x 2 1/2	6	0000461	0045958	0045979		
268	Hex Nut 5/8	6	0002638	0006025	0006026		
265 267 268	Cap Screw - 3/4 x 2 1/2 Cap Screw - 3/4 x 2 3/4 Hex Nut 3/4	2	0000472	0076698	0076699	6 x 6 x 12 8 x 6 x 12	6" - 8"
		6	0006814	0045959	0045980		
		6	0002710	0045962	0030467		
265 267 268	Cap Screw - 3/4 x 2 Cap Screw - 3/4 x 3 Hex Nut 3/4	2	0000472	0077698	0077699	8 x 8 x 12	8" - 10"
		6	0000476	0045960	0045981		
		6	0002710	0045962	0030467		
265 267 268	Cap Screw - 7/8 x 2 1/2 Cap Screw - 7/8 x 3 1/2 Hex Nut 7/8	2	0077704	0077706	0077707	10 x 10 x 12	10"
		10	0077705	0077708	0077709		
		10	0005983	0045963	0045983		

* Recommended spare parts

Repair Parts

Item 19 - Frame - Cast Iron Fig. 4565, 4566 & 4568					
Please Order by the Part No.					
Motor Frame	Fig. No.	4565		4566 - 4568	
New T - Style	Old U - Style	Part No.	Dwg. No.	Part No.	Dwg. No.
56C - 143TC - 145TC	56C - 182C - 184C	0019174	4940	-	-
182TC thru 256TC	213C thru 256UC	0019172	4941	-	-
284TC - 286TC	284UC - 286UC	0026352	4942	† 0055208	41361
324TC - 405TSC	324UC thru 405USC	0026415	4998	0055208	41361
-	444USC - 445USC	-	-	0054770	41362
-	364UP - 445UP	-	-	0055222	41361

† Frame 0055208 used with motor frame 284TC - 286TC requires adapter plate Part No. 0053376 and 4 cap screws 0000453

Parts for Frame (19) - Fig. 4565					
Item No.	For Frame Part No.	0019174 and 0019172		0026352 and 0026415	
	Description	Part No.	Dwg. No.	Part No.	Dwg. No.
* 18	Ball Bearing	0005304	† 30209	0005304	30209
33	Bearing Housing	▲▲ 0018310	23771	0046165	27061
46	Shaft Key - Coupling End	▲ 0002204	114932	0002205	114932
		▲▲ 0002205	114932		
66	Adjusting Nut Steel (2 Req'd)	0003137	NO7	0003137	NO7
69	Lock Washer	0003130	WO7	0003130	WO7
* 169	Seal - Bottom - Item 33	0046558	-	0046558	-
* 169A	Seal - Top - Item 33	0006952	-	0006952	-
170	Bearing Adapter	0045924	118338	0045924	118338
219	Cap Screw Item 19 to Motor (4 Req'd)	▲ 0000404	3/8 x 1 1/2	† 0000434	1/2 x 1 1/2
		▲▲ 0000434	1/2 x 1 1/2	†† 0000463	5/8 x 2 1/4
242	Grease Fitting - For Item 33	0003131	1/8 x 1610	0003131	1/8 x 1610
244	Gib Key - For Item 170	0002199	114932	0002199	114932
247	Hex Nut for item 221 (4 Req'd)	0002638	5/8	0002638	5/8
* 250	Frame Gasket (For Vapor Proof Construction Only)	0030664	115239	0030675	115255
256	Hex Nut for item 260 (4 Req'd)	0001179	1/2	0001179	1/2
258	Hex Nut for item 221 (4 Req'd)	0002638	5/8	0002638	5/8
260	Cap Screw for item 101 to 19 (4 Req'd)	0000441	1/2 x 2 1/2	0000441	1/2 x 2 1/2
277	Cap Screw for item 19 to 23 (4 Req'd)	0000453	5/8 x 1 3/4	0000453	5/8 x 1 3/4
332	Cap Screw for item 33 (4 Req'd)	▲▲ 0000404	3/8 x 1 1/2	0000404	3/8 x 1 1/2
341	Hex Nut for item 332 (4 Req'd)	▲▲ 0001168	5/8	0001168	5/8

▲ Frame 0019174 only
▲▲ Frame 0019172 only

† Frame 0026352 only
†† Frame 0026415 only

* Recommended spare parts



A Crane Co. Company

PUMPS & SYSTEMS

USA: (937) 778-8947 • Canada: (905) 457-6223 • International: (937) 615-3598

SECTION 95
PAGE 183
DATE 7/08

Repair Parts

Parts for Frame (19) - Fig. 4566 & 4568 All Sizes

Please Order by the Part No.

NOTE: Use double row ball bearing for all pumps with impeller diameter 10 inches or larger.

Item No.	Description	Single Row Bearing		Double Row Bearing	
		Part No.	Dwg. No.	Part No.	Dwg. No.
* 18	Ball Bearing	0055509	ND30212	0055509	ND30212DT
33	Bearing Housing	0055337	27262	0055339	27263
46	Shaft Key - Coupling End	0002219	114932	0002219	114932
66	Adjusting Nut Steel (2 Req'd)	0006032	NO9	0006032	NO9
69	Lock Washer	0046743	WO9	0046743	WO9
* 169	Seal - Bottom - Item 33	0055511	-	0055511	-
* 169A	Seal - Top - Item 33	0055510	-	0055510	-
170	Bearing Adapter	0055255	118705	0055255	118705
219	Cap Screw Item 19 to Motor (4 Req'd) Frame	284TC - 286TC 0000434	½ x 1½	0000434	½ x 1½
		324TSC - 326TSC 0000457	¾ x 2	0000457	¾ x 2
		364TSC - 405TSC 0000457	¾ x 2	0000457	¾ x 2
		364UP - 445UP 0000457	¾ x 2	0000457	¾ x 2
242	Grease Fitting - For Item 33	0003131	¾ x 1610	0003131	¾ x 1610
244	Gib Key - For Item 170	† 0002214	114932	† 0002214	114932
247	Hex Nut for item 221 (4 Req'd)	0002638	¾	0002638	¾
* 250	Motor Support Gasket (For Vapor Proof Construction Only)	0056022	118757	0056022	118757
256	Hex Nut for item 260 (4 Req'd)	0002638	¾	0002638	¾
258	Hex Nut for item 221 (4 Req'd)	0002638	¾	0002638	¾
260	Cap Screw for item 101 to 19 (4 Req'd)	0000465	¾ x 3¼	0000465	¾ x 3¼
277	Cap Screw for item 19 to 23 (4 Req'd)	0000459	¾ x 2¼	0000459	¾ x 2¼
332	Cap Screw for item 33 (4 Req'd)	0000404	¾ x 1½	0000404	¾ x 1½
341	Hex Nut for item 332 (4 Req'd)	0001163	¾	0001163	¾

† Item 244 - Use Part No. 0002218 for 284TC - 286TC motor Frame

**Item 131 - Coupling Guard (2 Req'd)
Fig. 4565 Only**

For Motor Support No.	0019174		0019172		0026352		0026415		Material
	Part No.	Dwg. No.	Part No.	Dwg. No.	Part No.	Dwg. No.	Part No.	Dwg. No.	
	0083307	120-014	0083300	120012	0083292	120-008	0083292	120-008	Steel

4566 - 68 All Motor Frames

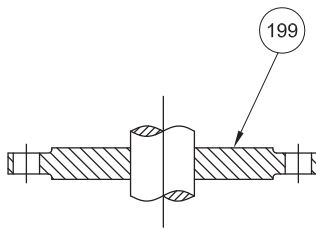
Part No.	Dwg. No.	Material
0084519	119-959	Steel

NOTE: Each guard requires 6 machine screws ¼ x ¾ Part No. 0001494

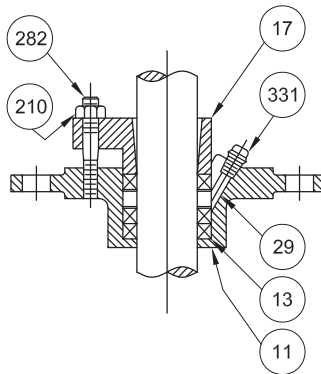
Repair Parts

Typical Shaft Bearing Assemblies

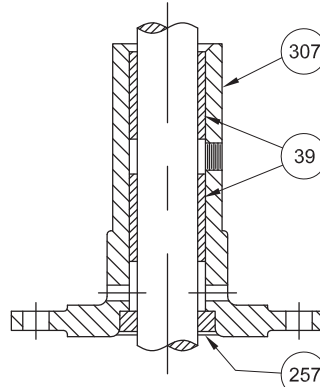
Please Order by the Part No.



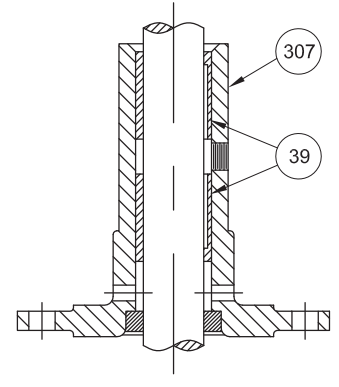
DESIGN NO. 1



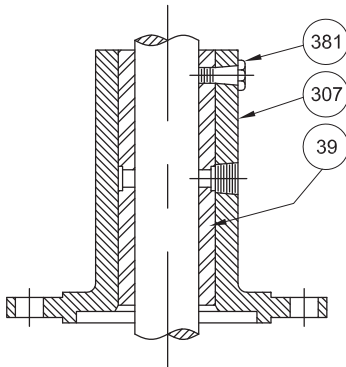
DESIGN NO. 3



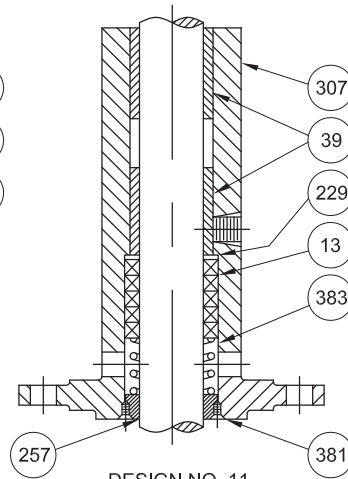
DESIGN NO. 6



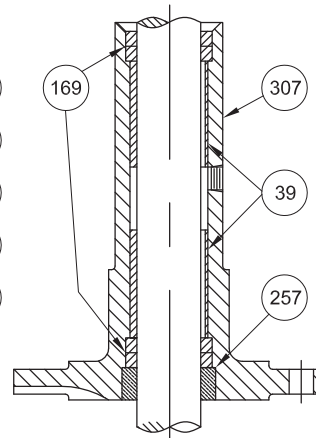
DESIGN NO. 8



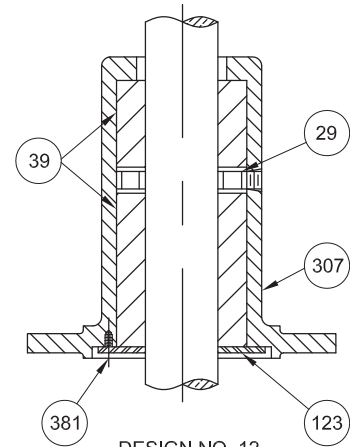
DESIGN NO. 10



DESIGN NO. 11



DESIGN NO. 13



DESIGN NO. 12

Item No.	Name of Part	Item No.	Name of Part	Item No.	Name of Part
11	Packing Box Cover	123	Bearing Cover	282	Stud
13	Packing	169	Lip Seal	307	Bearing Retainer
17	Gland	199	Top Closure	331	Grease Fitting
29	Lantern Ring	210	Hex Nut	381	Lock Screw
39	Bearing Bushing	229	Washer	383	Spring
		257	Choker Ring		

Repair Parts

Design 1 - Top Closure								
Item No.	Name and Description	Material	For Fig. 4565 1½" Shaft		For Fig. 4565 - 68 1 ¹³ / ₁₆ " Shaft		For Fig. 4568 2½" Shaft	
			Part No.	Dwg. No.	Part No.	Dwg. No.	Part No.	Dwg. No.
199	Top Closure	Cast Iron	0017038	113-248	0026472	114-218	0034881	114-218
Design 3 - Packing Box								
11	Packing Box Cover	Cast Iron 316 A-20	0016591 0040672 0043982	25575	0044510 0044514 0044516	26753	0044518 0044520 0044521	24754
* 13	Stuff. Box Packing (3 Req'd)	Graph. Asb. Teflon C59	0072574 0034044	5 ⁵ / ₁₆ x 5 ¹¹ / ₁₆	0024789 0057476	¾ x 7	0024790 -	¾ x 8
17	Stuff. Box Gland	Cast Iron 316 A-20	0018018 0075664 0075661	114-150	0024795 0102930 0102933	11355	0024801 0102924 0102927	11397
* 29	Lantern Ring Half (2 Req'd)	Teflon	0080366	119511	0079019	119-511	0079020	119-511
210	Nut for Item 17 (2 Req'd)	Cast Iron 316 A-20	0001168 0006012 0006013	¾"	0001168 0006012 0006013	¾"	0001179 0006018 0006019	½"
282	Stud for Item 17 (2 Req'd)	Cast Iron 316 A-20	0000521 0014623 -	¾ x 1"	0000524 0021390 -	¾ x 2	0000586 0029651 -	½ x 2¼
331	Grease Fitting	Steel	0003131	1 ¹ / ₆ x 1610	0003131	1 ¹ / ₆ x 1610	0003131	1 ¹ / ₆ x 1610

† Use 316 SS Stud on A-20 construction

Design 6 - Bottom Bearing Assembly								
Item No.	Description	Material	For Fig. 4565 1½" Shaft		For Fig. 4565 - 68 1 ¹³ / ₁₆ " Shaft		For Fig. 4568 2½" Shaft	
			Part No.	Dwg. No.	Part No.	Dwg. No.	Part No.	Dwg. No.
307	Bearing Retainer	Cast Iron 316 A-20	0015204 0032604 0053275	25245	0026464 0054395 0060230	25586	0026464 0054395 0060230	25586
* 257	Choker Ring	Cast Iron 316 A-20	0019346 0030943 0030944	113-038	0026470 0052986 0102845	114-164	0034689 0102846 0101882	115-118
* 39	Bearing Bushing (2 Req'd)	#8 Bronze Cast Iron Bab. Graph Carbolube	0019350 0019349 0027351 0030948	111-135	0014796 0026463 0033985 0075559	19700	0013340 0013339 0030994	19572
Design 8 - Intermediate Bearing Assembly								
307	Bearing Retainer	Cast Iron 316 A-20	0015204 0032604 0053275	25245	0026464 0053495 0060230	25586	0026464 0054395 0060230	25586
* 39	Bearing Bushing (2 Req'd)	#8 Bronze Cast Iron Bab. Graph Carbolube	0019350 0019349 0027351 0030948	111-135	0014796 0026463 0033985 0075559	19700	0013340 0013339 0030994 -	19572
Design 10								
307	Bearing Retainer	Cast Iron 316 A-20	0015204 0032604 0053275	25245	0057482 0057483 0102944	27321	0081734 - -	28029
* 39	Bearing Bushing	Teflon	0070235	119-180	† 0057486	19700	0088918	120-343
381	Lock Screw	Steel 316 A-20	0039321 0060882 0075659	¼ x ¾"	- 0034688 0034688	19727	0039921 - -	¼ x ¾"

† 2 Bushings required for 1¹³/₁₆" shaft

* Recommended spare parts

Repair Parts

Design 11								
Item No.	Name and Description	Material	For Fig. 4565 1½" Shaft		For Fig. 4565 - 68 1 ¹³ / ₁₆ " Shaft		For Fig. 4568 2½" Shaft	
			Part No.	Dwg. No.	Part No.	Dwg. No.	Part No.	Dwg. No.
307	Bearing Retainer	Cast Iron 316 A-20	0047751 0075882 0075884	27134	0045817 0052695 0102945	27036	- - -	- - -
* 257	Choker Ring	Cast Iron 316 A-20	0049866 0075889 0075888	118-503	0026470 0052986 0102845	114-164	- - -	- - -
* 13	Packing Ring (5 Req'd)	Garlock 8913 Teflon C59	0072574 0034044	5 ⁵ / ₁₆ x 1¼	0034308 0057476	¾ x 7¼	- -	- -
383	Spring	Steel 316 A-20	0009842 - 0075876	16351	- 0013366 0102921	116-184	- - -	- - -
229	Washer	Steel 316 A-20	0000318 0075886 0075885	110-496	- 0049991 0085841	110-496	- - -	- - -
381	Set Screw (4 Req'd)	Steel 316 A-20	0006761 0075880 0075879	¼ x ¼	0006761 0075880 0075879	¼ x ¼	- - -	- - -
* 39	Bearing Bushing (Top)	#8 Bronze Cast Iron Bab. Graph. Carbolube	0019350 0019349 0027351 0030948	111-135	0014796 0026463 0039985 0075559	19700	- - - -	- - - -
* 39	Bearing Bushing (Bottom)	#8 Bronze Cast Iron Bab. Graph. Carbolube	0019350 0019349 0027351 0030948	111-135	0072389 0072388 0072390 0075560	119-254	- - - -	- - - -
Design 12								
307	Bearing Retainer	Cast Iron 316 A-20	0049880 0049882 0075824	27152	0081732 0102953 0101883	27965	0081734 - -	28029
* 39	Bearing Bushing (Top) Bearing Bushing (Bottom)	Rubber Rubber	0008632 0008633	115-000	0083828 0008637	115-000	0084575 0084576	115-000
* 29	Lantern Ring	Cast Iron 316 A-20	0027314 0075984 0075982	113-741	† 0079019 † 0079019 † 0079019	119-511	0044130 - -	117-597
123	Bearing Cover	Steel 316 A-20	0020486 0075885 0075886	113-619	NR	-	0102889 - -	114-742
257	Choker Ring	Cast Iron 316 A-20	NR	-	0034689 0102846 0101882	115-118	NR	
381	Set Screw (3 Req'd)	Steel A-20	0005158 0030938	¼ x ½	NR	-	0005158 -	¼ x ½

† Part No. 0079019 is a lantern ring half made of teflon. 3 are required for each bearing assembly. It is used on cast iron and alloy construction.

* Recommended spare parts

Repair Parts

Design 13

Item No.	Name and Description	Material	For Fig. 4565 1½" Shaft		For Fig. 4565 - 68 1 ¹³ / ₁₆ " Shaft		For Fig. 4568 2½" Shaft	
			Part No.	Dwg. No.	Part No.	Dwg. No.	Part No.	Dwg. No.
307	Bearing Retainer	Cast Iron 316 A-20	0060224	27417	0060232	27418	-	-
			0060227		0060235		-	
			0060228		0060236		-	
* 257	Choker Ring	Cast Iron 316 A-20	0019346	113-038	0026470	114-164	-	-
			0030943		0052986		-	
			0030944		0102845		-	
* 169	Lip Seal (4 Req'd)	Rubber	0060300	1½ LPD H1/L5	0060299	1 ¹³ / ₁₆ LPD H1/L5	-	-
* 39	Bearing Bushing (Top)	#8 Bronze Cast Iron Bab. Graph. Carbolube	0092325	120-756	0014796	19700	-	-
			0092324		0026463		-	
			0092326		0033985		-	
			0092327		0075559		-	
* 39	Bearing Bushing (Bottom)	#8 Bronze Cast Iron Bab. Graph. Carbolube	0019350	111-135	0014796	19700	-	-
			0019349		0026463		-	
			0027351		0033985		-	
			0030948		0075559		-	

	Fig. 4565			Fig. 4566 - 68		
	Part No.	Dwg. No.	Material	Part No.	Dwg. No.	Material
For Cast Iron Casings	0004553	111-969	Velbuna	0054558	118-738	Velbuna
For Alloy Casings	0012464	111-969	Klinger	0012609	113-841	Velbuna

Item 71 Casing Adapter

Fig. 4565				Fig. 4566 - 68			
Cast Iron Part No.	316 SS Part No.	A-20 SS Part No.	Dwg. No.	Cast Iron Part No.	316 SS Part No.	A-20 SS Part No.	Dwg. No.
0053333	0058781	0058783	33536	0049575	0092103	0102942	33569

Item No.	Description	Fig. 4565 - 4" Column			Fig. 4566 - 68 - 6" or 8" Column		
		Steel Part No.	316 Part No.	A-20 Part No.	Steel Part No.	316 Part No.	A-20 Part No.
226	Cap Screw ½ x 1¼ (4 Req'd)	0000437	0045955	0045976	-	-	-
	Cap Screw ¾ x 2 (8 Req'd)	-	-	-	0000457	0045956	0045977

Parts to connect column pipe to casing adapter.

Item No.	Description	Material	Fig. 4565		Fig. 4566 - 68	
			Part No.	Dwg. No.	Part No.	Dwg. No.
241	Gasket	Velbuna	0004553	111-969	0054558	118-738

* Item 241 Gasket - Casing Adapter to Bottom Bearing Assembly

* Recommended spare parts

Repair Parts

Item 101 - Column Pipe									
Please Order by the Part No.									
Item No.	Pump Setting Length	Fig. 4566 4" Column				Fig. 4566 6" Column		Fig. 4568 8" Column	
		Steel Part No.	316 SS Part No.	A-20 SS Part No.	Length	Part No.	Length	Part No.	Length
101	† 3" Spacer	0026847	-	-	3"	-	-	-	-
	† 6" Spacer	0024706	-	-	6"	-	-	-	-
	† 2 Ft.	0026337	-	-	11 5/8"	-	-	-	-
	3 Ft.	0019710	0076154	0076162	23 5/8"	0055378	21 1/2"	0063705	17 1/2"
	4 Ft.	0019711	0076153	0076161	35 5/8"	0055379	33 1/2"	0063706	29 1/2"
	5 Ft.	0019712	0076152	0076160	47 5/8"	0055380	45 1/2"	0063707	41 1/2"
6 Ft.	0019713	0076151	0076159	59 5/8"	0055381	57 1/2"	0063708	53 1/2"	
101 A Top	7 Ft.	0019711	0076153	0076161	35 5/8"	0055380	45 1/2"	0063707	41 1/2"
101 Bottom		0019711	0076153	0076161	35 5/8"	0078867	23 1/2"	0078694	23 1/2"
101 A Top	8 Ft.	0019712	0076152	0076160	47 5/8"	0055383	59 1/2"	0063710	59 1/2"
101 Bottom		0019711	0076153	0076161	35 5/8"	0055378	21 1/2"	0063705	17 1/2"
101 A Top	9 Ft.	0019713	0076151	0076159	59 5/8"	0055383	59 1/2"	0063710	59 1/2"
101 Bottom		0019711	0076153	0076161	35 5/8"	0055379	33 1/2"	0063706	29 1/2"
101 A Top	10 Ft.	0019713	0076151	0076159	59 5/8"	0055383	59 1/2"	0063710	59 1/2"
101 Bottom		0019712	0076152	0076160	47 5/8"	0055380	45 1/2"	0063707	41 1/2"
101 A Top	11 Ft.	0019713	0076151	0076159	59 5/8"	0055383	59 1/2"	0063710	59 1/2"
101 Bottom		0019713	0076151	0076159	59 5/8"	0055381	57 1/2"	0063708	53 1/2"
101 A Top	12 Ft.	0019713	0076151	0076159	59 5/8"	0055383	59 1/2"	0063710	59 1/2"
101 Intermediate		0019711	0076153	0076161	35 5/8"	0055380	45 1/2"	0063707	41 1/2"
101 Bottom		0019711	0076153	0076161	35 5/8"	0078867	23 1/2"	0078694	23 1/2"
101 A Top	13 Ft.	0019713	0076151	0076159	59 5/8"	0055383	59 1/2"	0063710	59 1/2"
101 Bottom		0019712	0076152	0076160	47 5/8"	0055383	59 1/2"	0063710	59 1/2"
		0019711	0076153	0076161	35 5/8"	0055378	21 1/2"	0063705	17 1/2"
101 A Top	14 Ft.	0019713	0076151	0076159	59 5/8"	0055383	59 1/2"	0063710	59 1/2"
101 Bottom		0019713	0076151	0076159	59 5/8"	0055383	59 1/2"	0063710	59 1/2"
		0019711	0076153	0076161	35 5/8"	0055379	33 1/2"	0063706	29 1/2"
101 A Top	15 Ft.	0019713	0076151	0076159	59 5/8"	0055383	59 1/2"	0063710	59 1/2"
101 Bottom		0019713	0076151	0076159	59 5/8"	0055383	59 1/2"	0063710	59 1/2"
		0019712	0076152	0076160	47 5/8"	0055380	45 1/2"	0063707	41 1/2"

† These items are cast iron.

For 6" and 8" column in alloy refer to application engineering at your regional office. Furnish serial number of pump.

Parts to Connect Two or More Pieces of Column Pipe											
			For Fig. 4565 - 4" Column			For Fig. 4566 - 6" Column			For Fig. 4568 - 8" Column		
Item No.	Description	No. Req'd	Steel Part No.	316 SS Part No.	A-20 SS Part No.	Steel Part No.	316 SS Part No.	A-20 SS Part No.	Steel Part No.	316 SS Part No.	A-20 SS Part No.
285	Cap Screw 1/2 x 2 1/2	4	0000441	0043029	-	-	-	-	-	-	-
	Stud 1/2 x 3	4	-	-	0053893	-	-	-	-	-	-
	Cap Screw 5/8 x 3	8	-	-	-	0033372	-	-	0033372	-	-
	Stud 5/8 x 3 1/2	8	-	-	-	-	0041806	0041807	-	0041806	0041807
288	Hex Nut 1/2	†	0001179	0006018	0006019	-	-	-	-	-	-
	Hex Nut 5/8	††	-	-	-	0002638	0006022	0006026	0002638	0006022	0006026
255	Washer	▲	0015142	0030940	0030941	-	-	-	-	-	-

† Four required for use with cap screws. Eight required for use with studs
 †† Eight required for use with cap screws. Sixteen required for use with studs
 ▲ Four washers required for every pump. Add four each for every intermediate bearing assembly.

Repair Parts

Item 6 Shaft (*Note) - Fig. 4565 - 1½" Diameter (4" Column Pipe)							
For Motor Frame		56C, 143-145TC, 182-184C		182-184TC, 213-215TC, 254-256UC, 213-215C, 254-256UC		324-326UC, 364-365UC	
Item No.	Pump Setting	1045 Steel Part No.	416 SS Part No.	1045 Steel Part No.	416 SS Part No.	1045 Steel Part No.	416 SS Part No.
6	2	0074210	0074219	0053498	0053512	0053526	0053540
	3	0074211	0074220	0053499	0053513	0053527	0053541
	4	0074212	0074221	0053500	0053514	0053528	0053542
	5	0074213	0074222	0053501	0053515	0053529	0053543
	6	0074214	0074223	0053502	0053516	0053530	0053544
	7	0074215	0074224	0053503	0053517	0053531	0053545
	8	0074216	0074225	0053504	0053518	0053532	0053546
	9	0074217	0074226	0053505	0053519	0053533	0053547
	10	0074218	0074227	0053506	0053520	0053534	0053548
	6A Top 6B Bottom	11	0074343 0053390	0074348 0053391	0053412 0053390	0053417 0053391	0053422 0053390
6A Top 6B Bottom	12	0074344 0053390	0074349 0053391	0053413 0053390	0053418 0053391	0053423 0053390	0053428 0053391
6A Top 6B Bottom	13	0074345 0053390	0074350 0053391	0053414 0053390	0053419 0053391	0053424 0053390	0053429 0053391
6A Top 6B Bottom	14	0074346 0053390	0074351 0053391	0053415 0053390	0053420 0053391	0053425 0053390	0053430 0053391
6A Top 6B Bottom	15	0074347 0053390	0074352 0053391	0053416 0053390	0053421 0053391	0053426 0053390	0053431 0053391
For Motor Frame		284-286TC		284-286TSC		324-326SC, 324-326TSC, 364-365USC, 364-365TSC, 404-405USC	
6	2	0074171	0074180	0074189	0074198	0053554	0053568
	3	0074172	0074181	0074190	0074199	0053555	0053569
	4	0074173	0074182	0074191	0074200	0053556	0053570
	5	0074174	0074183	0074192	0074201	0053557	0053571
	6	0074175	0074184	0074193	0074202	0053558	0053572
	7	0074176	0074185	0074194	0074203	0053559	0053573
	8	0074177	0074186	0074195	0074204	0053560	0053574
	9	0074178	0074187	0074196	0074205	0053561	0053575
	10	0074179	0074188	0074197	0074206	0053562	0053576
	6A Top 6B Bottom	11	0074353 0053390	0074358 0053391	0074363 0053390	0074368 0053391	0053432 0053390
6A Top 6B Bottom	12	0074354 0053390	0074359 0053391	0074364 0053390	0074369 0053391	0053433 0053390	0053438 0053391
6A Top 6B Bottom	13	0074355 0053390	0074360 0053391	0074365 0053390	0074370 0053391	0053434 0053390	0053439 0053391
6A Top 6B Bottom	14	0074356 0053390	0074361 0053391	0074366 0053390	0074371 0053391	0053435 0053390	0053440 0053391
6A Top 6B Bottom	15	0074357 0053390	0074362 0053391	0074367 0053390	0074372 0053391	0053436 0053390	0053441 0053391

* NOTE - Part Number is for Shaft only. Add Shaft Trim Parts from Parts Page 192.

Repair Parts

Item 6 Shaft (*Note) - Fig. 4566 - 1 ¹³ / ₁₆ " Diameter (6" Column Pipe)								
Please Order by the Part No.								
For Motor Frame		284-286TC, 284-286TSC, 324-326SC, 324-326TSC, 364-365USC, 364-365TSC, 404-405USC, 444-445USC, 444-445TSC, 447TSC, 504-505SC		324-326UC, 324-326TC, 364-365UP, 404-405UP, 444-445UP		504-505P		
Item No.	Pump Setting	1045 Steel Part No.	416 SS Part No.	1045 Steel Part No.	416 SS Part No.	1045 Steel Part No.	416 SS Part No.	
6	3	0055580	0055588	0055548	0055556	0055564	0055572	
	4	0055581	0055589	0055549	0055557	0055565	0055573	
	5	0055582	0055590	0055550	0055558	0055566	0055574	
	6	0055583	0055591	0055551	0055559	0055567	0055575	
	7	0055584	0055592	0055552	0055560	0055568	0055576	
	8	0055585	0055593	0055553	0055561	0055569	0055577	
	9	0055586	0055594	0055554	0055562	0055570	0055578	
	10	0055587	0055595	0055555	0055563	0055571	0055579	
	6A Top	11	0055537	0055542	0055927	0055522	0055527	0055532
	6B Bottom		0055335	0055336	0055335	0055336	0055335	0055336
6A Top	12	0055538	0055543	0055928	0055523	0055528	0055533	
6B Bottom		0055335	0055336	0055335	0055336	0055335	0055336	
6A Top	13	0055539	0055544	0055519	0055524	0055529	0055534	
6B Bottom		0055335	0055336	0055335	0055336	0055335	0055336	
6A Top	14	0055540	0055545	0055520	0055525	0055530	0055535	
6B Bottom		0055335	0055336	0055335	0055336	0055335	0055336	
6A Top	15	0055541	0055546	0055521	0055526	0055531	0055536	
6B Bottom		0055335	0055336	0055335	0055336	0055335	0055336	
Item 6 Shaft (*Note) - Fig. 4568 - 1 ¹³ / ₁₆ " Diameter (8" Column Pipe)								
6	3	0055289	0055297	0055257	0055265	0055273	0055281	
	4	0055290	0055298	0055258	0055266	0055274	0055282	
	5	0055291	0055299	0055259	0055267	0055275	0055283	
	6	0055292	0055300	0055260	0055268	0055276	0055284	
	7	0055293	0055301	0055261	0055269	0055277	0055285	
	8	0055294	0055302	0055262	0055270	0055278	0055286	
	9	0055295	0055303	0055263	0055271	0055279	0055287	
	10	0055296	0055304	0055264	0055272	0055280	0055288	
	6A Top	11	0055325	0055330	0055305	0055310	0055315	0055320
	6B Bottom		0055335	0055336	0055335	0055336	0055335	0055336
6A Top	12	0055326	0055331	0055306	0055311	0055316	0055321	
6B Bottom		0055335	0055336	0055335	0055336	0055335	0055336	
6A Top	13	0055327	0055332	0055307	0055312	0055317	0055322	
6B Bottom		0055335	0055336	0055335	0055336	0055335	0055336	
6A Top	14	0055328	0055333	0055308	0055313	0055318	0055323	
6B Bottom		0055335	0055336	0055335	0055336	0055335	0055336	
6A Top	15	0055329	0055334	0055309	0055314	0055319	0055324	
6B Bottom		0055335	0055336	0055335	0055336	0055335	0055336	

* NOTE - Part Number is for Shaft only. Add Shaft Trim Parts from Parts Page 192.

Repair Parts

Item 336 - Gasket for Discharge Flange			
Pump Size	Rubber Part No.	Klinger Part No.	Dwg. No.
4 x 4 x 12 6 x 4 x 12	0007201	0033439	113-646
6 x 6 x 12 8 x 6 x 12	0007203	0045951	
8 x 8 x 12 10 x 10 x 12	0007274 0007275	0045952 0045953	

Item 254 - Discharge Pipe Gasket (For Vapor Tight Construction Only)			
Pipe Size	Part No.	Material	Dwg. No.
4" 6" 8" 10"	0015183 0015185 0015186 0015187	Rubber	18437

Item 294 - Discharge Pipe Nut (2 Req'd)				
Discharge Pipe Size	Cast Iron Part No.	316 SS Part No.	A-20 SS Part No.	Dwg. No.
4" 6" 8" 10"	0018535 0020932 0026275 0026277	0030171 0030173 0063576 0077714	0030179 0030181 0063577 0077715	18091

Item 295 - Discharge Flange			
Discharge Pipe Size	Cast Iron Part No.	316 SS Part No.	A-20 SS Part No.
4" 6" 8" 10"	0026032 0026034 0026035 0026036	0030055 0030057 0030058 0045948	0030197 0030199 0045973 0045974

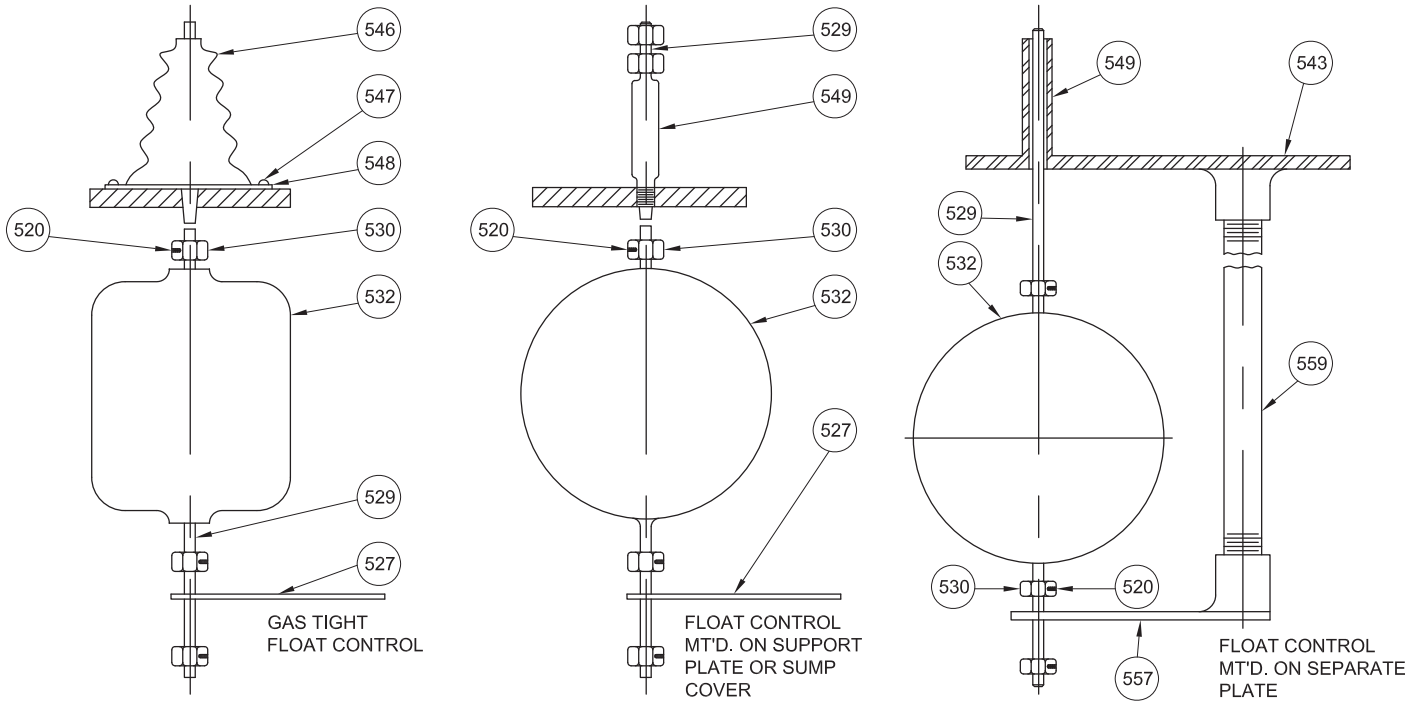
Item 105 - Discharge Elbow - Combination (Flanged to Threaded)					
Pump Size	Discharge Pipe Size	Cast Iron Part No.	316 SS Part No.	A-20 SS Part No.	Dwg. No.
4 x 4 x 12 6 x 4 x 12	4" 6"	0007169 0007486	0063586 0063592	0063588 0063594	112-850 26200
6 x 6 x 12 8 x 6 x 12	6" 8"	0007186 0007188	0063604 0063608	0063606 0063611	15970 26181
8 x 8 x 12 10 x 10 x 12	8" 10"	0027710 0055624	0063612 0077700	0063614 0077702	17839 118-735
	10"	0034693	0063616	0063618	15869

Shaft Trim Parts				
Figure No. & Shaft Size	Shaft Material	Item 32 Key Part No.	Item 270 Washer Part No.	* Item 26 Screw Part No.
4565 1½" Dia.	1045 Stl., 410 SS, 304 SS, 416 SS	114-932	118-543	118-546
	316 SS	0002204	0074732	0052985
	A-20 SS	0087904	0074732	0053315
4566-68 1 ¹³ / ₁₆ "	1045 Stl., 410 SS, 304 SS, 416 SS	118-761	119-077	0080387
	316 SS	0055876	0080308	0080387
	A-20 SS	0077125 0077126	0080308 0080309	0080391

Item 70 - Shaft Coupling - For Use with Shafts Over 10 Feet					
For Shaft Dia	C-1117 Steel Part No.	416 SS Part No.	316 SS Part No.	A-20 SS Part No.	Dwg. No.
1½ 1 ¹³ / ₁₆	0018023 0018024	0032039 See More	0068931 0092089	0075701 0102934	11544

NOTE: Use 316 Coupling with 416 Shaft.

Repair Parts



Item No.	Name of Part	Item No.	Name of Part	Item No.	Name of Part
520	Set Screw	532	Float	548	Washer
527	Float Rod Bottom Guide	543	Cover Plate	549	Float Rod Guide Tube
529	Float Rod	546	Bellows	557	Float Guide
530	Float Rod Collars	547	Machine Screw	559	Guide Pipe

Float Accessories						
† Item 529 - Float Rod Only						
Pump Setting	Rod Length	Fiberglass Part No.	Brass Part No.	316 SS Part No.	A-20 SS Part No.	Drawing No.
2'	36"	0075489	0020620	0020611	0102847	114-576
3'	48"	0075490	0020621	0020612	0102848	
4'	60"	0075491	0020622	0020613	0102849	
5'	72"	0075492	0020623	0020614	0102850	
6'	84"	0075493	0020624	0020615	0102851	
7'	96"	0075494	0020625	0020616	0102852	
8'	108"	0075495	0020626	0020617	0102853	
9'	120"	0075496	0020627	0020618	0102854	
10'	132"	0075497	0020628	0020619	0102855	
11'	144"	0102866	0026279	0102861	0102856	
12'	156"	0102867	0053853	0102862	0102857	
13'	168"	0102868	0053854	0102863	0102858	
14'	180"	0102869	0053855	0102864	0102859	
15'	192"	0102870	0053856	0102865	0102860	

▲ For complete float switch assemblies refer to section 49
 † For float rod assemblies with collars refer to section 49

Repair Parts

† Item 530 - Collar with Set Screw (5 Req'd)			
Drawing No.	Brass Part No.	316 SS Part No.	A-20 SS Part No.
18087	0006382	0102992	0102993

Item 532 - Float - See Section 49

Item 527 - Float Rod Bottom Guide			
Drawing No.	Steel Part No.	316 SS Part No.	A-20 SS Part No.
18914	0021176	0032073	0102844

Item 549 - Guide Tube	
Drawing No.	Steel Part No.
114-650	0024230

Item 557 - Float Guide - For Use with Float Cover Plate				
Drawing No.	Steel Part No.	Brass Part No.	316 SS Part No.	A-20 SS Part No.
114-611	0024191	0075905	0075902	0059936

Item 546 - Bellows		
Drawing No.	Part No.	Material
113-978	0026138	Rubber

Item 548 - Washer	
Drawing No.	Steel Part No.
114-549	0026139

Item 547 - Machine Screws (3 Req'd)	
Size	Steel Part No.
¼ x ¾	0001494

† For float rod assemblies with collars refer to Section 49