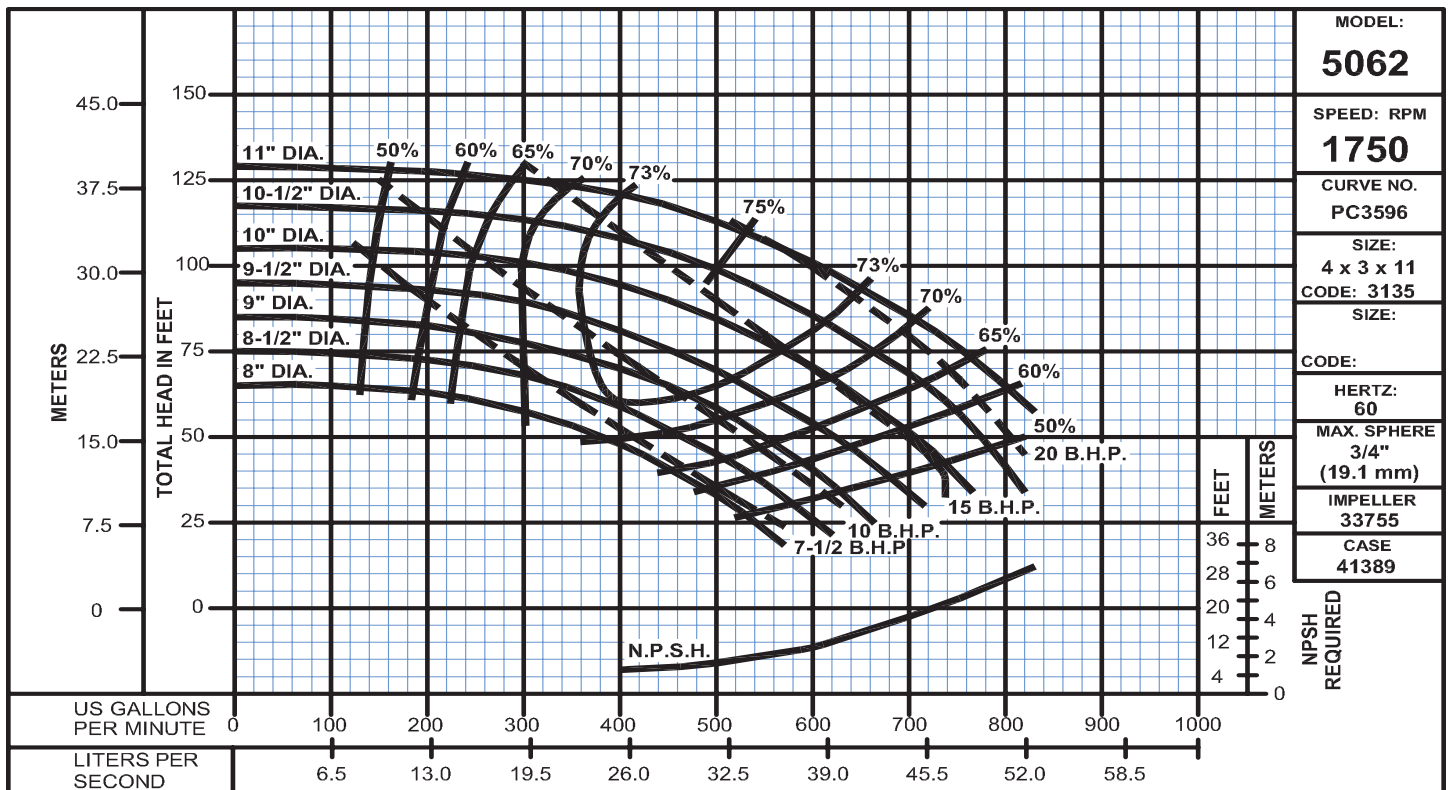
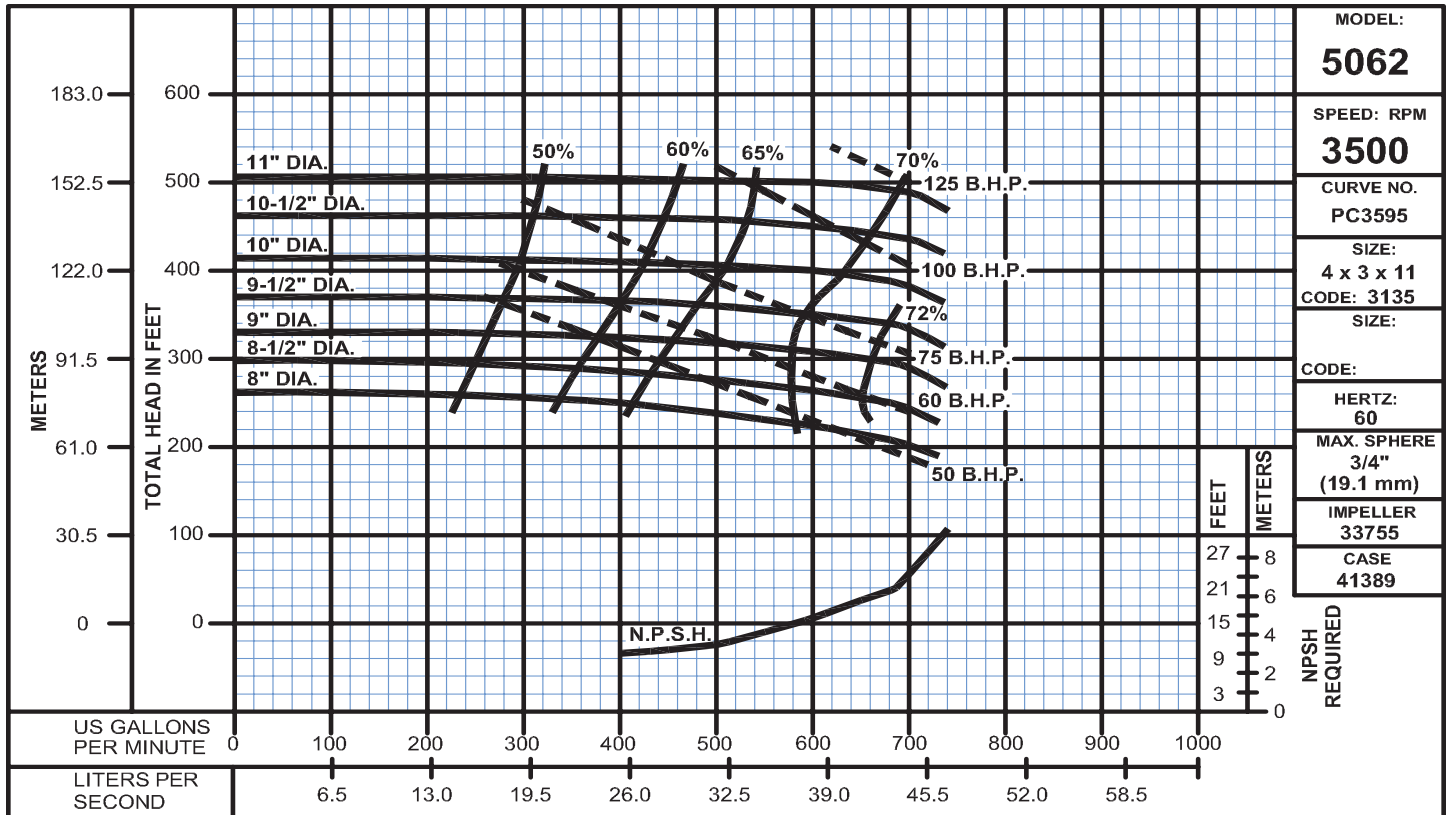


### Horizontal Split Case Centrifugal Pumps



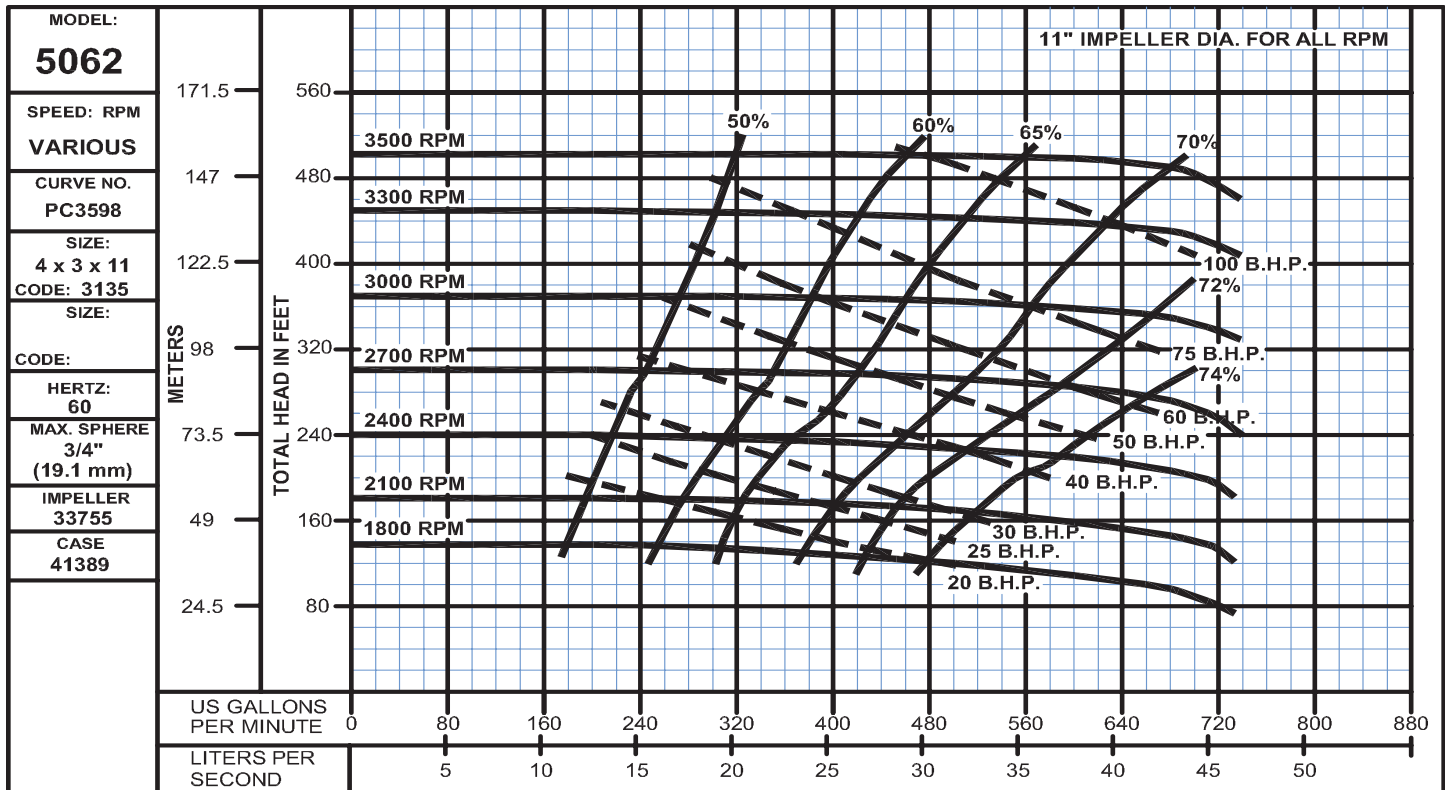
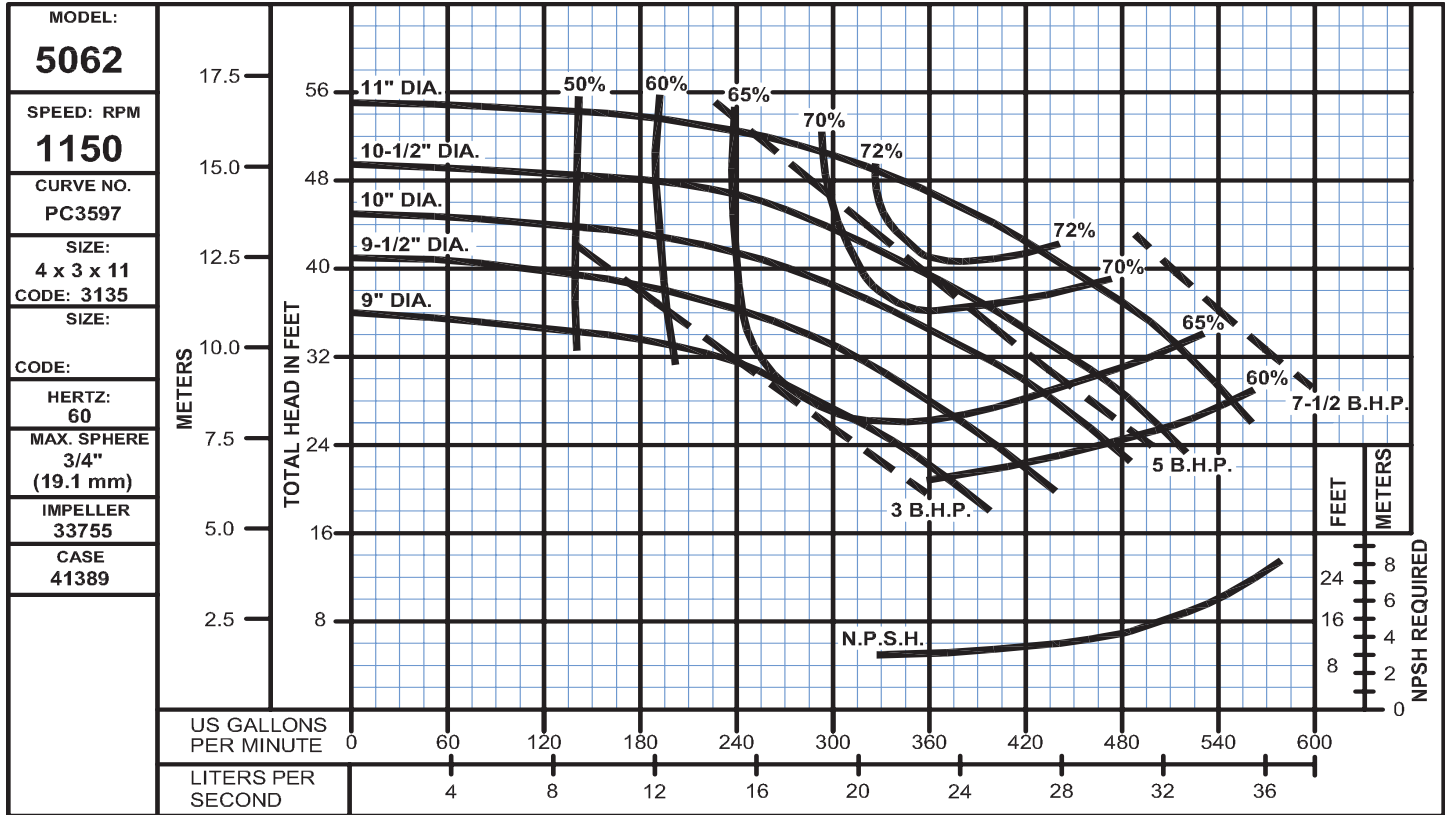
# Fig. 5062

Sizes: 4 x 3 x 11, 1150 & Various RPM  
Bulletin 5060A

# DEMING®

www.cranepumps.com

## Horizontal Split Case Centrifugal Pumps



SECTION 29  
PAGE 38  
DATE 6/07

**CRANE®**

PUMPS & SYSTEMS

A Crane Co. Company

USA: (937) 778-8947 • Canada: (905) 457-6223 • International: (937) 615-3598