

Horizontal Split Case Centrifugal Pumps

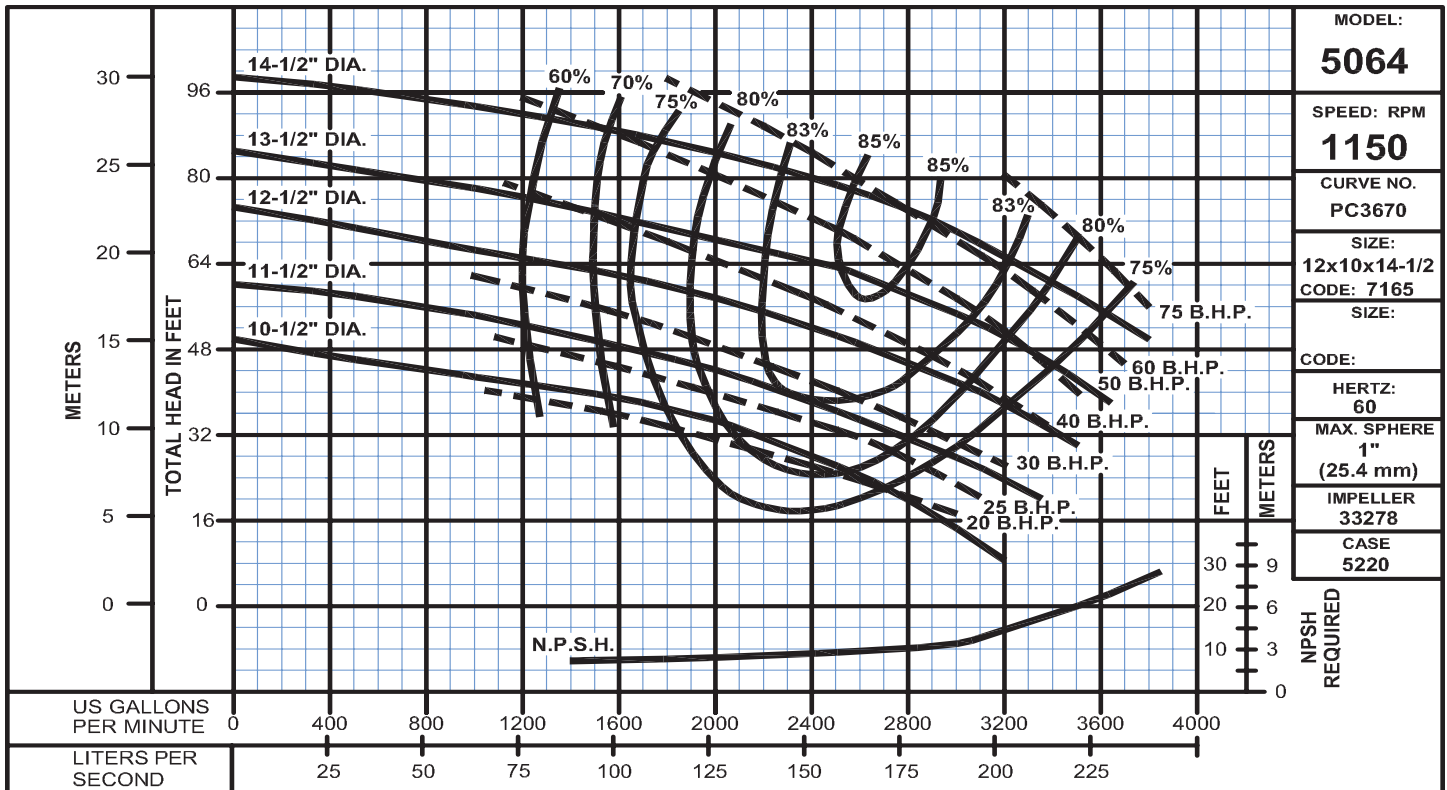
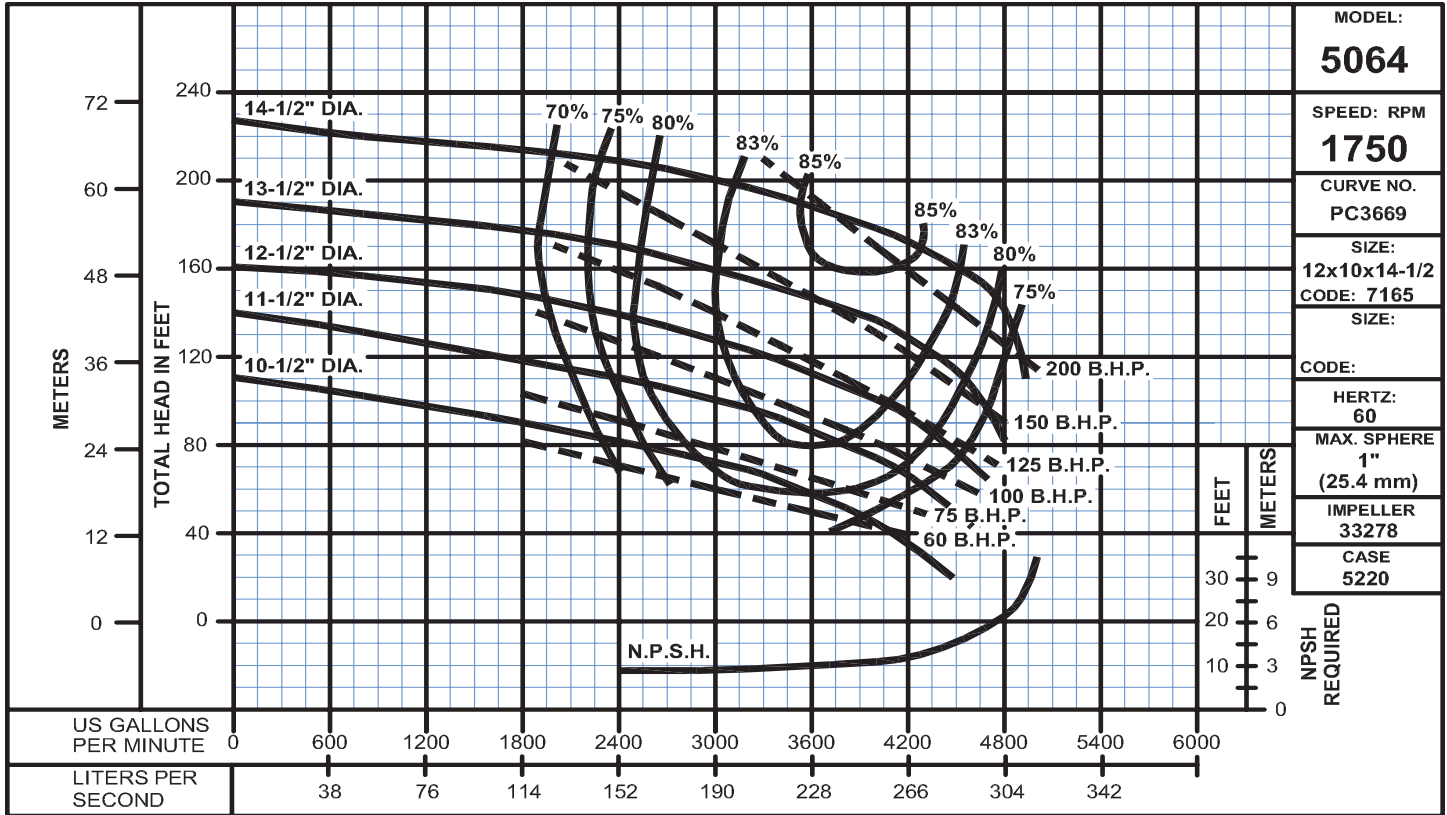


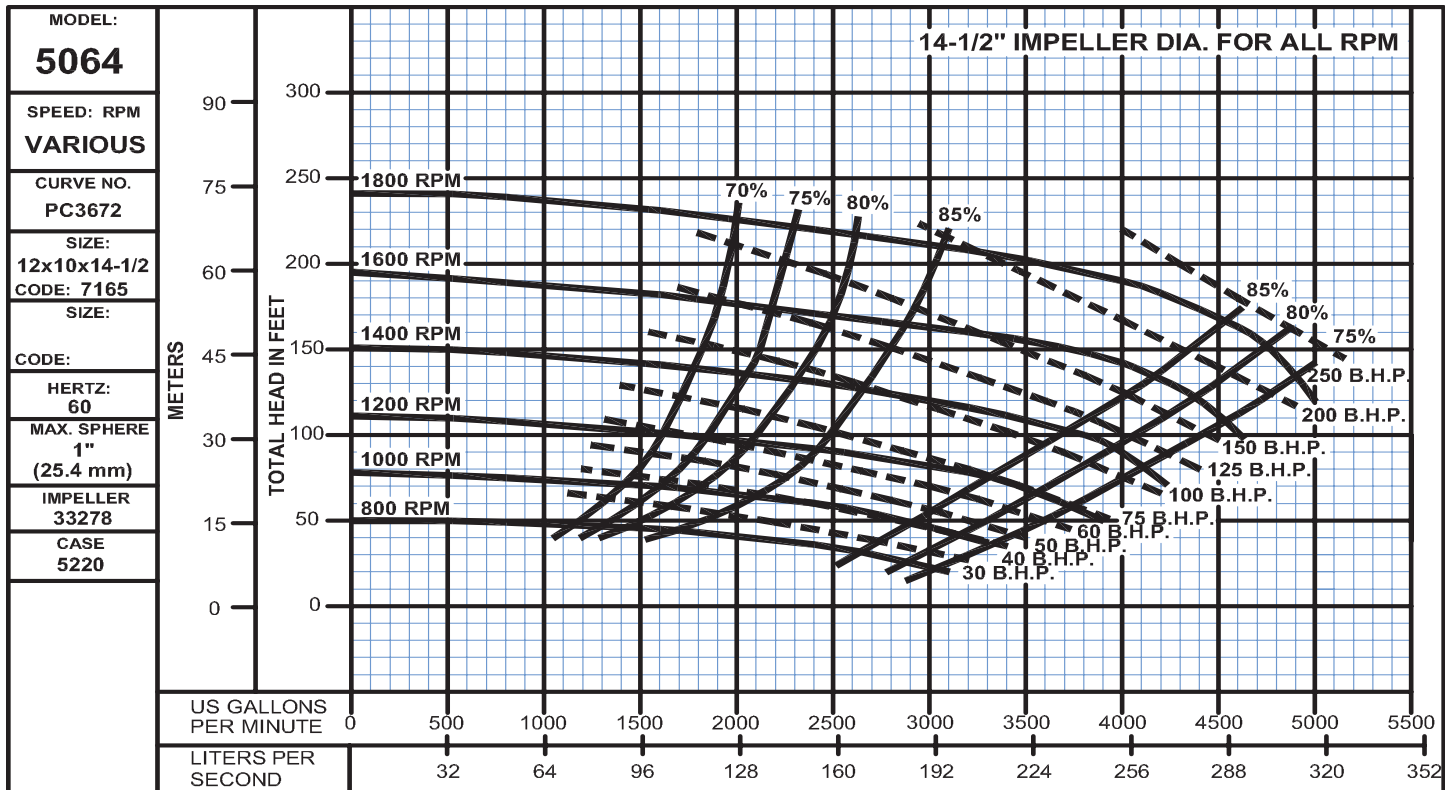
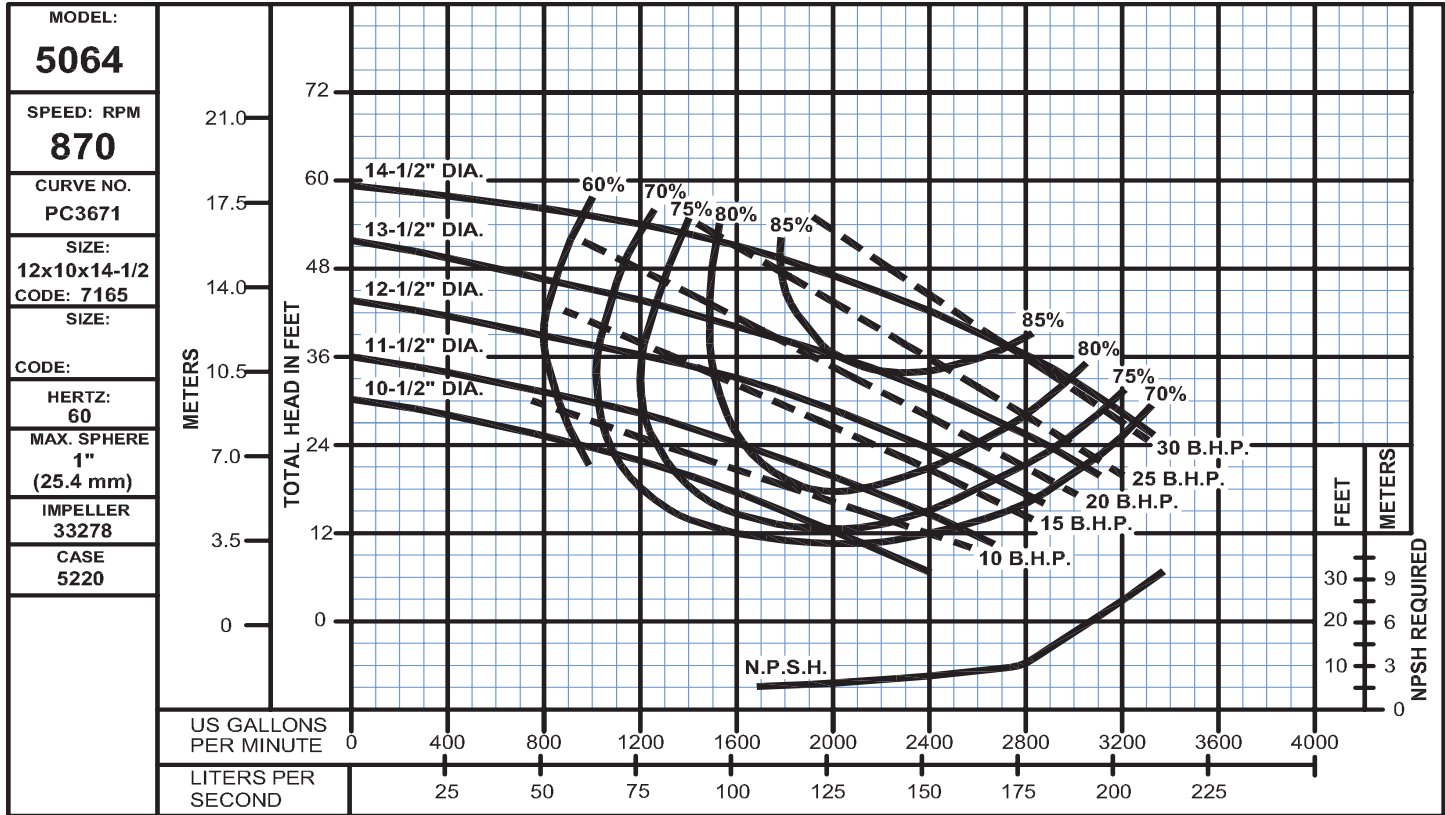
Fig. 5064

Sizes: 12 x 10 x 14½, 870 & Various RPM
Bulletin 5060A

DEMING®

www.cranepumps.com

Horizontal Split Case Centrifugal Pumps



SECTION 29
PAGE 78
DATE 6/07

CRANE
®

PUMPS & SYSTEMS

A Crane Co. Company

USA: (937) 778-8947 • Canada: (905) 457-6223 • International: (937) 615-3598