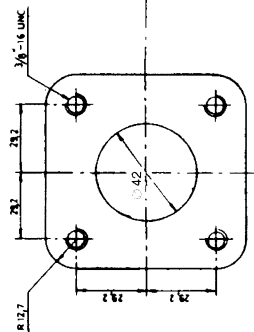
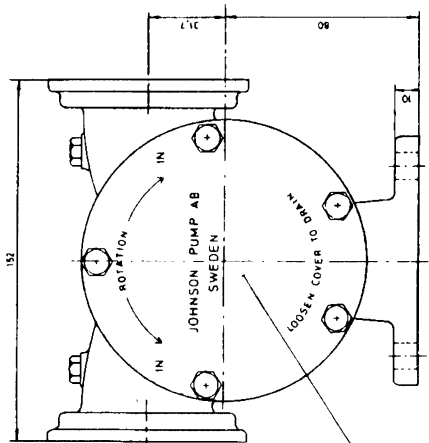
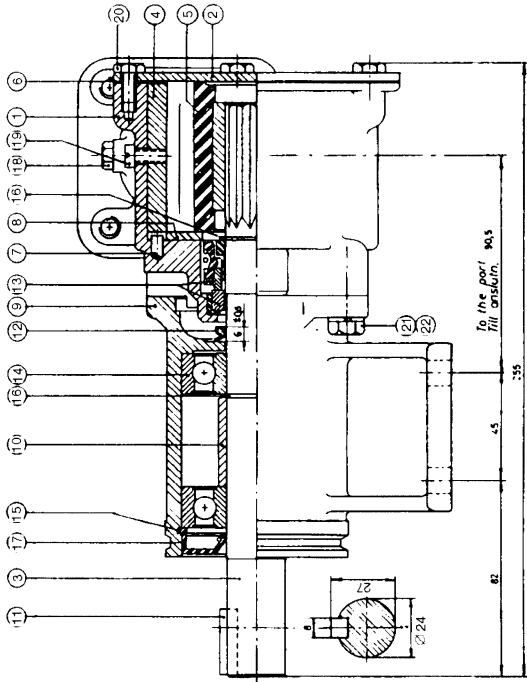
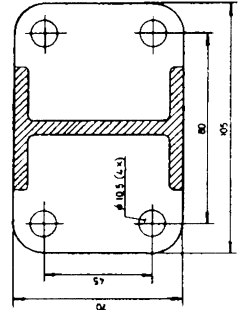


Multipurpose



Pump och Pumpbeställning stämpels på locket



22	4	Washer	Bricka	05-02-101
21	4	Screw	Skruv	05-04-128
20	5	Screw	Skruv	05-04-46
19	1	Screw	Skruv	See table
18	2	Plug	Plugg	05-03-122
17	1	Lip seal	Läpptätning	05-29-118
16	2	Retaining ring	Låsring	05-34-108
15	1	Retaining ring	Låsring	05-34-118
14	2	Ball bearing	Kullager	05-08-504
13	1	Mech. seal	Mek. tätning	05-20-118
12	1	V-ring	V-ring	05-03-124
11	1	Key	Kil	05-19-505
10	1	Spacer	Distans	01-42747
9	1	Pedestal	Lagerrot	01-13020
8	1	Wear plate	Slitbricka	01-42423
7	1	Pin	Stift	01-42426
6	1	Gasket	Packning	01-42424
5	1	Impeller	Impeller	See table
4	1	Cam	Kam	See table
3	1	Shaft	Axel	01-35137
2	1	End cover	Lock	01-42422-1
1	1	Body	Pumphus	01-11206
Pos.	Qty.	Description	Material Dimension	Drawing nr.

PUMP NO PUMPBETEKNING	PUMPTYP PUMPTYP	RUBBER QUAL. GUMMINNVALITE	③ IMPELLER		④ CAM KAM		⑤ SCREW SKRUV
			DESCRIPTION BENÄMNING	NO NR	DESCRIPTION BENÄMNING	NO NR	
10-1302-1	F8B-3000	NITRILE	Ø 27/30	1/2	Ø 14/16	05-00-008	
10-1302-2	F8B-3000	NITRILE	Ø 27/30	1/2	Ø 14/16	05-00-008	
10-1302-3	F8B-3000	NITRILE	Ø 27/30	1/2	Ø 14/16	05-00-008	
10-1302-4	F8B-3000	NITRILE	Ø 27/30	1/2	Ø 14/16	05-00-008	

10-1302-1	1	10-1302-1	1	10-1302-1	1
10-1302-2	1	10-1302-2	1	10-1302-2	1
10-1302-3	1	10-1302-3	1	10-1302-3	1
10-1302-4	1	10-1302-4	1	10-1302-4	1

10-13024	1	Johnson Impellerpump	05-04-128	05-04-128	05-04-128
10-13024	1	Type F8B-3000	05-04-128	05-04-128	05-04-128
10-13024	1	10-13024	05-04-128	05-04-128	05-04-128