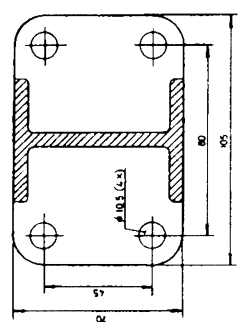
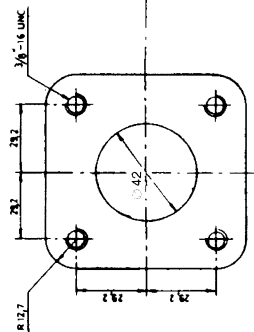
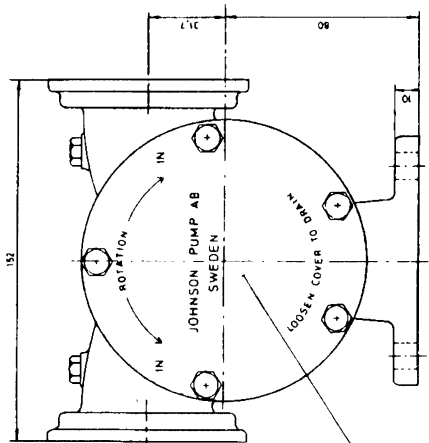
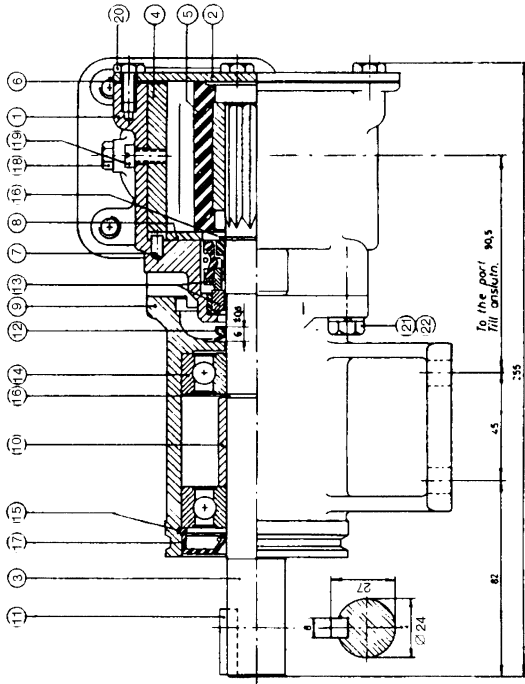


Multipurpose



PUMP NO PUMPBETEKNING	PUMPTYP PUMPTYP	RUBBER QUAL. GUMMINVÄLITE	③ IMPELLER		④ CAM		CAM MAM	NO SCREW SKRUV
			DESCRIPTION BENÄMNING	NO HR	DESCRIPTION BENÄMNING	NO HR		
10-1302-1	F8B-3000	NITRILE	00-0785	1/2	01-4280	05-00-08		
10-1302-2	F8B-3000	NITRILE	00-0785	1/2	01-4245	05-00-08		
10-1302-3	F8B-3000	NITRILE	00-0785	1/2	01-4276	05-00-141		

22	4	Washer	Bricka	05-02-101
21	4	Screw	Skruv	05-04-128
20	5	Screw	Skruv	05-04-46
19	1	Screw	Skruv	See table
18	2	Plug	Plugg	05-03-122
17	1	Lip seal	Läpplätning	05-29-118
16	2	Retaining ring	Låsring	05-34-108
15	1	Retaining ring	Låsring	05-34-118
14	2	Ball bearing	Kullager	05-08-504
13	1	Mech. seal	Mek. tätning	05-20-118
12	1	V-ring	V-ring	05-03-124
11	1	Key	Nil	05-19-505
10	1	Spacer	Distans	01-42747
9	1	Pedestal	Lagerrot	01-13020
8	1	Wear plate	Slitoricka	01-42423
7	1	Pin	Stift	01-42426
6	1	Gasket	Packning	01-42424
5	1	Impeller	Impeller	See table
4	1	Cam	Kam	See table
3	1	Shaft	Åxel	01-35137
2	1	End cover	Lock	01-42422-1
1	1	Body	Pumphus	01-11206

Pos.	Qty.	Description	Material	Dimension	Drawing nr.
1	1	Body	Cast iron		01-11206
2	1	End cover	Cast iron		01-42422-1
3	1	Shaft	Steel		01-35137
4	1	Cam	Steel		See table
5	1	Impeller	Cast iron		See table
6	1	Gasket	Graphite		01-42424
7	1	Pin	Steel		01-42426
8	1	Wear plate	Cast iron		01-42423
9	1	Pedestal	Cast iron		01-13020
10	1	Spacer	Steel		01-42747
11	1	Key	Steel		05-03-124
12	1	V-ring	Steel		05-20-118
13	1	Mech. seal	Steel		05-08-504
14	2	Ball bearing	Steel		05-34-118
15	1	Retaining ring	Steel		05-34-108
16	2	Retaining ring	Steel		05-29-118
17	1	Lip seal	Steel		05-03-122
18	2	Plug	Steel		05-04-46
19	1	Screw	Steel		05-04-128
20	5	Screw	Steel		05-02-101
21	4	Screw	Steel		05-04-128
22	4	Washer	Steel		05-02-101

Rev.	By	Check	Date
1			
2			
3			
4			
5			