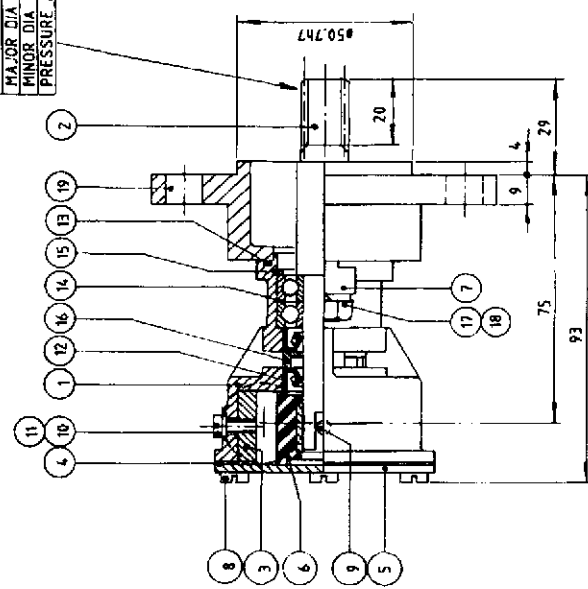
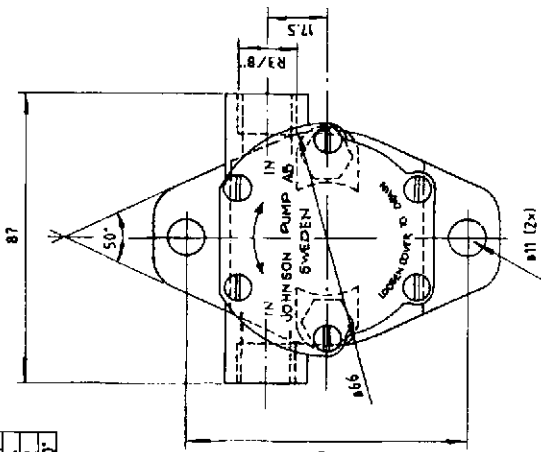


article number 10-24326 pump F4B-9

SPURGE SPECIFICATION	
NO. OF TEETH	12
MODUL	1.0
MAJOR DIA	16
MINOR DIA	14
PRESSURE ANGLE	20°



SERVISEKIT		99-55866	
19	1	FLANS - FLANGE	01-35291
18	2	BRICKA - WASHER	05-02-101
17	2	SKRUV - SCREW	05-04-621
16	1	BRICKA - WASHER	01-65955
15	1	LÅSRING - RETAINING RING	05-34-131
14	2	KULLAGER - BALL BEARING	05-08-503
13	1	O-RING	05-06-571
12	2	LÅPTÄTTNING - LIP SEAL	05-29-139
11	1	BRICKA - WASHER	SEE TABLE
10	1	SKRUV - SCREW	SEE TABLE
9	1	SKRUV - SCREW	05-04-163
8	6	SKRUV - SCREW	05-04-163
7	2	KLAPPEN - CLIP	01-65238
6	1	IMPELLER	08-8108
5	1	LOCK - END COVER	01-65287
4	1	PACKNING - GASKET	01-65284
3	1	AXEL - SHAFT	SEE TABLE
2	1	PUMPHUS - BODY	01-35239
1	1	IMPELLER	01-35239

PUMP NO	PUMPTYPE	CAM NO	THICKNESS	SCREW	WASHER NO	NOS.
10-24326-01	F4B-9	01-42389	7/1 5.3	05-04-114	05-01-120	1
10-24326-02	F4B-903	01-45288	7/3 4.0	05-04-163		2
10-24326-03	F4B-902	01-45084	7/2 2.5	05-04-163		2

JOHNSON PUMP
 ENGINEERING - SWEDEN
 10-24326
 TYPE F4B-9

JOHNSON PUMP
 ENGINEERING - SWEDEN
 10-24326
 TYPE F4B-9

JOHNSON PUMP
 ENGINEERING - SWEDEN
 10-24326
 TYPE F4B-9