



OBERDORFER®

An Ingersoll Rand Business

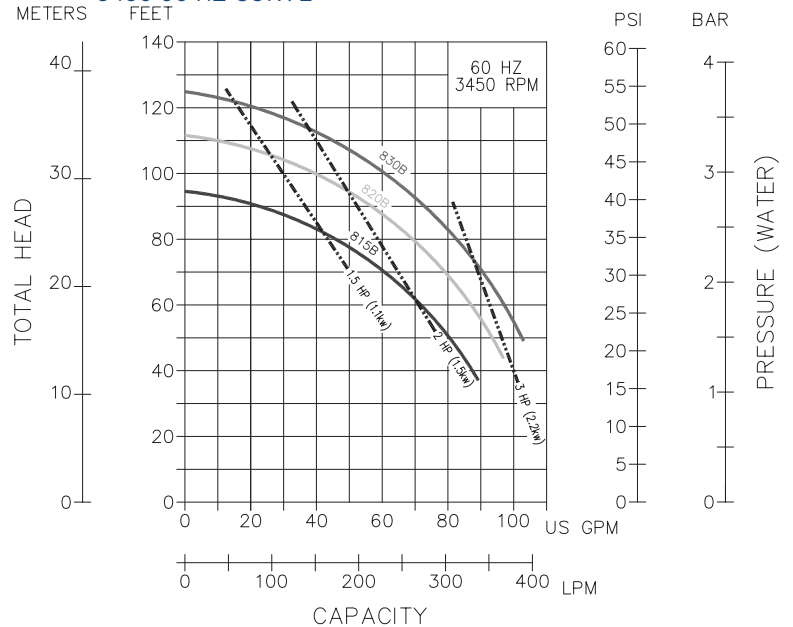
Models 815B(E), 820B(E), 830B(E) Bronze Close Coupled Centrifugal Pumps



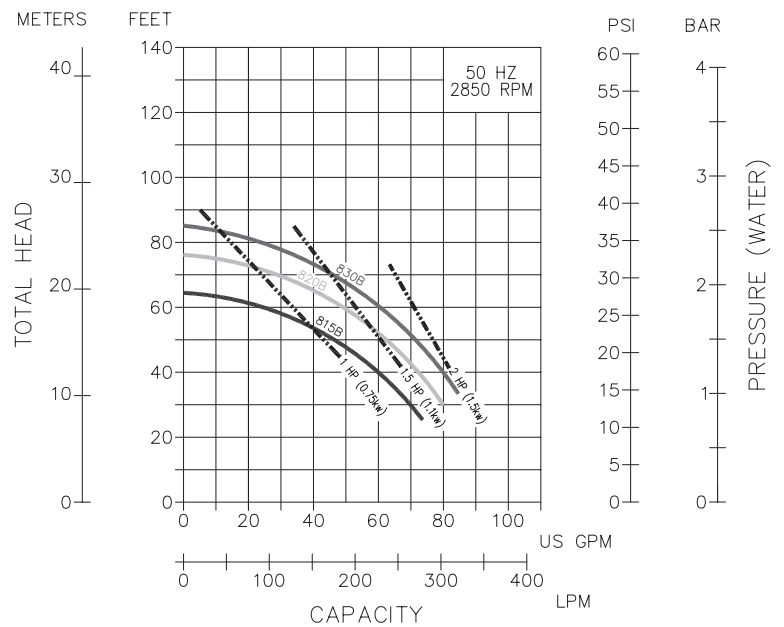
Features

- Inlet: 1-1/2", Outlet 1-1/4" NPT or BSPT
- Durable Cast Bronze Construction
- Rugged Integrated Mounting Base
- Corrosion Resistant Stainless Steel Shaft
- Maintenance Friendly Back Pullout Design
- Closed Vane Balanced Bronze Impeller with Wear Ring in keyed or threaded (-07) style
- Extremely Quiet Operation
- Multiple Mechanical Seal Choices to handle a wide range of clean and contaminated fluids
- Outlet and drain can be oriented to (4) different positions for installation ease.
- O Ring housing seal eliminates gaskets problems
- Pump Heads readily mount to NEMA 56C or IEC 90 B14 Face Mount motors
- Complete Pump - Motor units available
- For SAE AA 2 Bolt Hydraulic Motor Mount - see OB830B-08
- For Pedestal style models see 81PB, 82PB, 83PB

Performance 3450 60 HZ CURVE



2850 50 HZ CURVE



Pump Head Numbering System

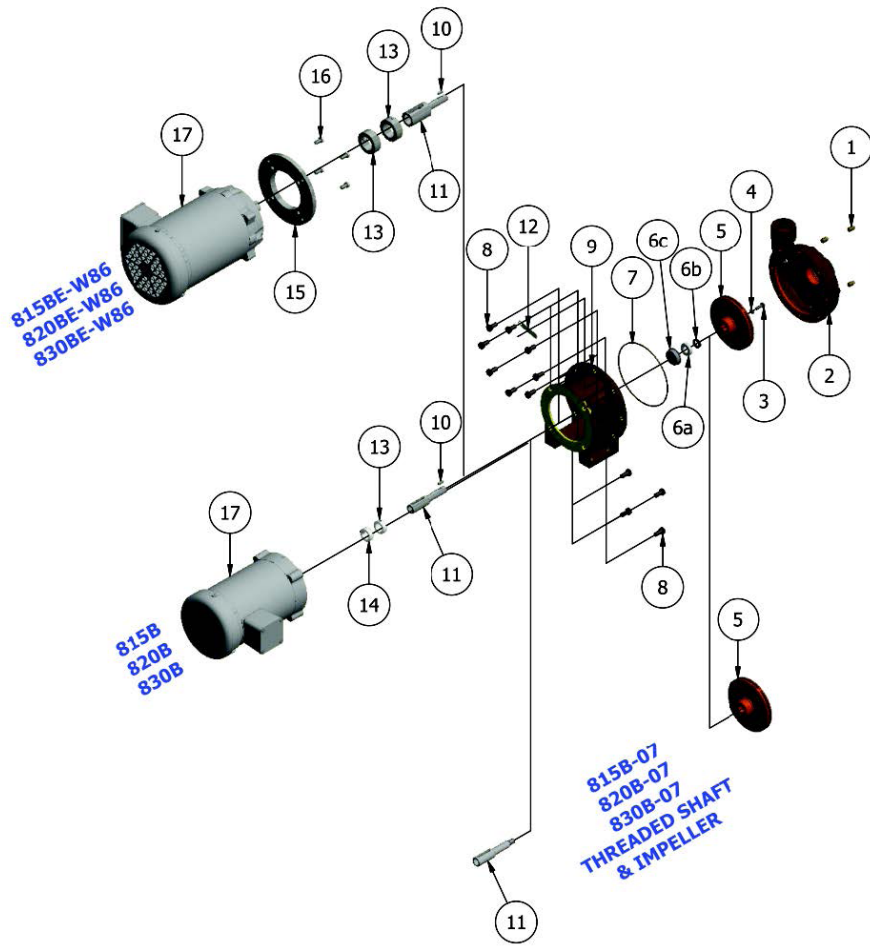
| 820B | E | 07 | S10 | IEC90 |
|------------------|--------------|-----------------------|-------------------|-------------------------------|
| Base Pump | Ports | Impeller Style | Shaft Seal | Frame (Pump Head Only) |
| OB815B | none NPT | none Key | none NBR | none NEMA 56C |
| OB820B | E BSPT | 07 Thread | S10 FKM | 84 NEMA 184TC |
| OB830B | | | S11 PTFE | IEC90 IEC 90 B14 |



OBERDORFER[®]

An Ingersoll Rand Business

Exploded View and Parts List



| | | 1 | 2 | 3 | 4 | 5 | 6 | 6a | 6b | 6c | 6a & 6b | 7 | 8 | 9 | 10 | 11 | 12 | 13 | 14 | 15 | 16 | Repair Kit | |
|----------------|--------|--------|------------|--------|--------|---------|---------|--------|--------|--------|----------|------------|---------|----------|--------|--------|--------|--------|--------|--------|-------------|------------|---------|
| | | Qty. 4 | Qty.1 | Qty. 2 | Qty. | Qty. 1 | Qty. 1 | Qty. 1 | Qty. 1 | Qty. 1 | Qty. 1 | Qty. 1 | Qty. 12 | Qty. 1 | Qty. 1 | Qty. 1 | Qty. 1 | Qty. 1 | Qty. 1 | Qty. 1 | Qty. 1 | Qty. 1 | Qty. 4 |
| Pump No. | Frame | | | | | | | | | | | | | | | | | | | | | | |
| OB815B (E) | | | | | | OB32354 | | | | | | | | | | | | | | | | | OB10959 |
| OB820B (E) | | | | OB7656 | OB7395 | OB32352 | | | | | | | | | | OB7421 | OB6845 | | | | N/A | N/A | OB10952 |
| OB830B (E) | | | | | | OB32353 | OB32346 | | | | | | | | | | | | | | | | OB10953 |
| OB815B (E) -07 | | OB5395 | OB7585 (E) | | | OB32002 | | OB7427 | OB7426 | OB2913 | OB742601 | OB9797-163 | OB5411 | OB7586-1 | OB7428 | | | OB5886 | OB7658 | | | | OB10959 |
| OB820B (E) -07 | | | | NA | NA | OB32001 | | | | | | | | | | OB2928 | N/A | | | | N/A | N/A | OB12312 |
| OB830B (E) -07 | | | | | | OB32000 | | | | | | | | | | | | | | | | | OB10953 |
| | -84 | | | | | | | | | | | | | | | OB2508 | OB2510 | OB2509 | OB2509 | OB2507 | OB2501 | | |
| | -IEC90 | | | | | | | | | | | | | | | OB3681 | | OB2509 | OB2509 | OB2116 | OB2483L-016 | | |

Repair kit includes items 5, 6, 7.

* for FKM and PTFE seal options - see Seal Table above

Item numbers 6a, 6b & 6c (Seal Parts) are sold only as Seal Assembly (Item 6.)

** Legacy version product used Gasket OB7425 until OB2007.



12500 South Pulaski Road
Alsip, IL 60803, USA
Phone (800) 448.1668