

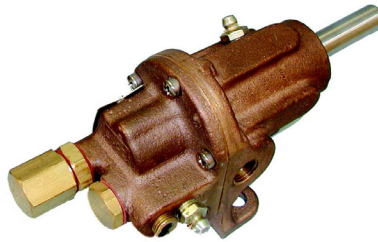
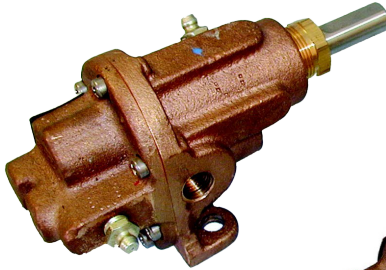


# OBERDORFER®

An Ingersoll Rand Business

## N1000LE Series Bronze Pedestal Gear Pumps

Model OBN1000LE



Model OBN1000LRES3

### Features

- 1/4" BSPT Ports
- Temp. Range: -40°C - 200°C
- Bronze corrosion resistant castings
- Stainless steel shafts & fasteners
- Synthetic braided compression packing (with PTFE dispersion) or lip seals are available
- Positive displacement flow
- Bronze bearing surfaces with grease fittings

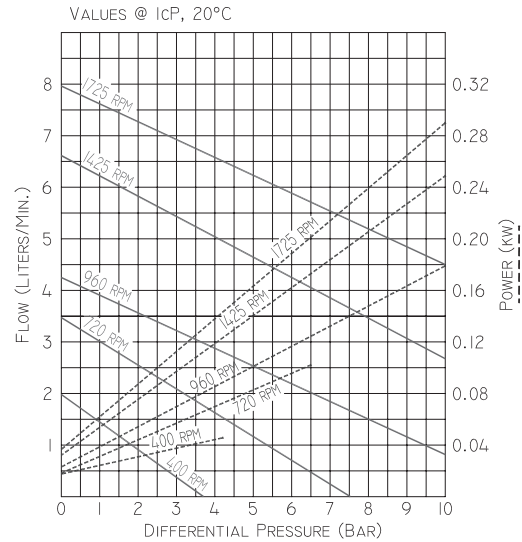
### Suction Lift

Close tolerances and the positive pumping action make the rotary gear pump capable of lifting water on the suction side as high as 6 meters. Though gear pumps are self priming, a foot valve is recommended. If possible, wet the gears with liquid to be pumped for the first dry start. Liquid retained in the system and gear chambers serves to "wet" the pump on subsequent starts.

### Liquids and Temperature

Service life will be increased substantially if the liquid pumped is clean and has some degree of lubricity. These positive displacement pumps have tight tolerances. Fine abrasives like sand, silt, or powders in suspension will accelerate pump wear and reduce throughput.

### Performance



\* For pressures over 7 bar, the above selections are suitable for pumping fluids with lubricity (eg. oils, polymers). Service life will decrease for fluids without lubricity (eg. water, solvents).

Liquids compatible with bronze and stainless steel can be pumped providing proper seal has been specified (see chemical compatibility or check factory). No carbon bearings used. When possible, flush the pump after each usage.

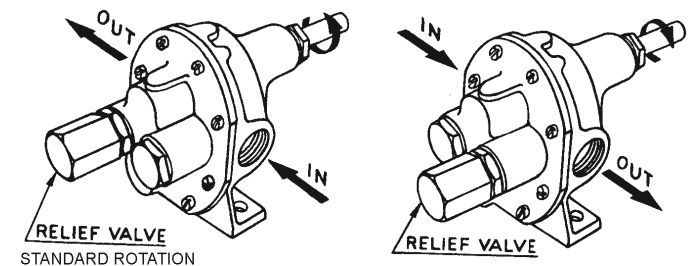
Temperature extremes are detrimental to service life and should be avoided. Basic metals of construction allow a temperature range of -40° to 200°C. Some lip seal elastomers have a limit of 100°C. (see engineering data or check factory). Allowing a liquid to freeze in the pump can cause damage.

### By-Pass and Rotation

The pump by-pass is not intended to be a metering or flow control device. Its main purpose is to function as a pressure relief when the desired set point is exceeded, over-heating can occur within 5 -10 minutes if the discharge line is completely shut off for extended periods.

Reversing rotation reverses the "IN" and "OUT" ports and the location of the by-pass ports have to be reversed.

The by-pass valve is factory set at 3.5 bar. To increase the setpoint, turn the by-pass valve adjusting screw in a clockwise direction.





# OBERDORFER®

An Ingersoll Rand Business

## Mounting and Drive Arrangement

Pumps should be mounted on a rigid base and properly aligned with the motor. Direct drive via flexible shaft coupling is the preferred method. When a belt drive is needed, additional support is necessary to absorb the added pulley load. This can be accomplished in two ways:

1. When space is an issue, use an optional “long shafted” pump and add a properly shimmed pillow block bearing (see figure 1).
2. Use the standard pump arrangement by adding an independently supported jackshaft (see figure 2) or use kit 1P.

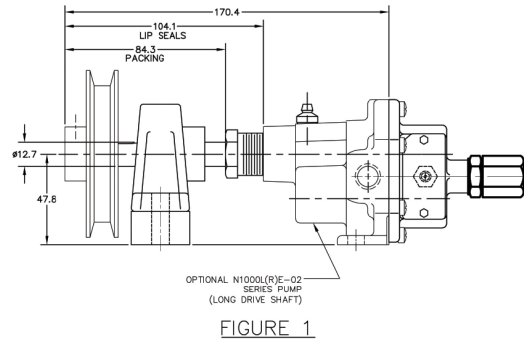


FIGURE 1

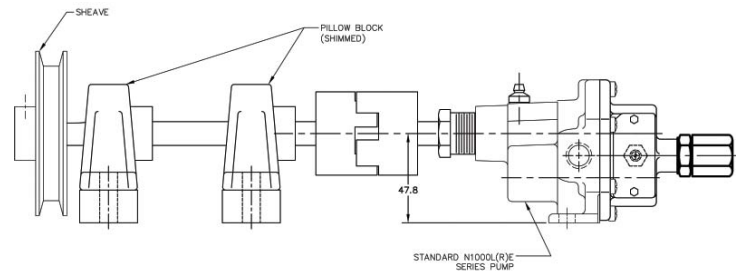
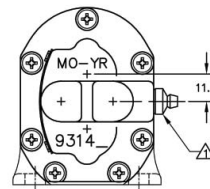
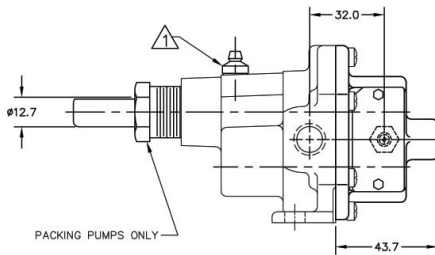


FIGURE 2

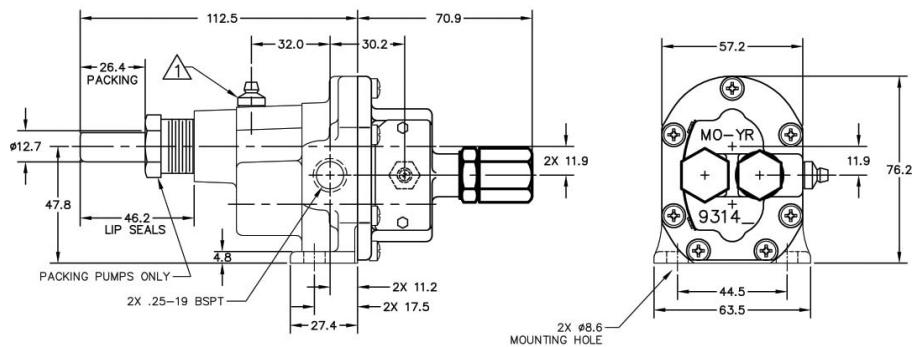
## Dimensions

N1000LE Series



▲ GREASE FITTINGS (ITEM 17) INSTALLED INTO THESE CONNECTIONS.

N1000LRE Series



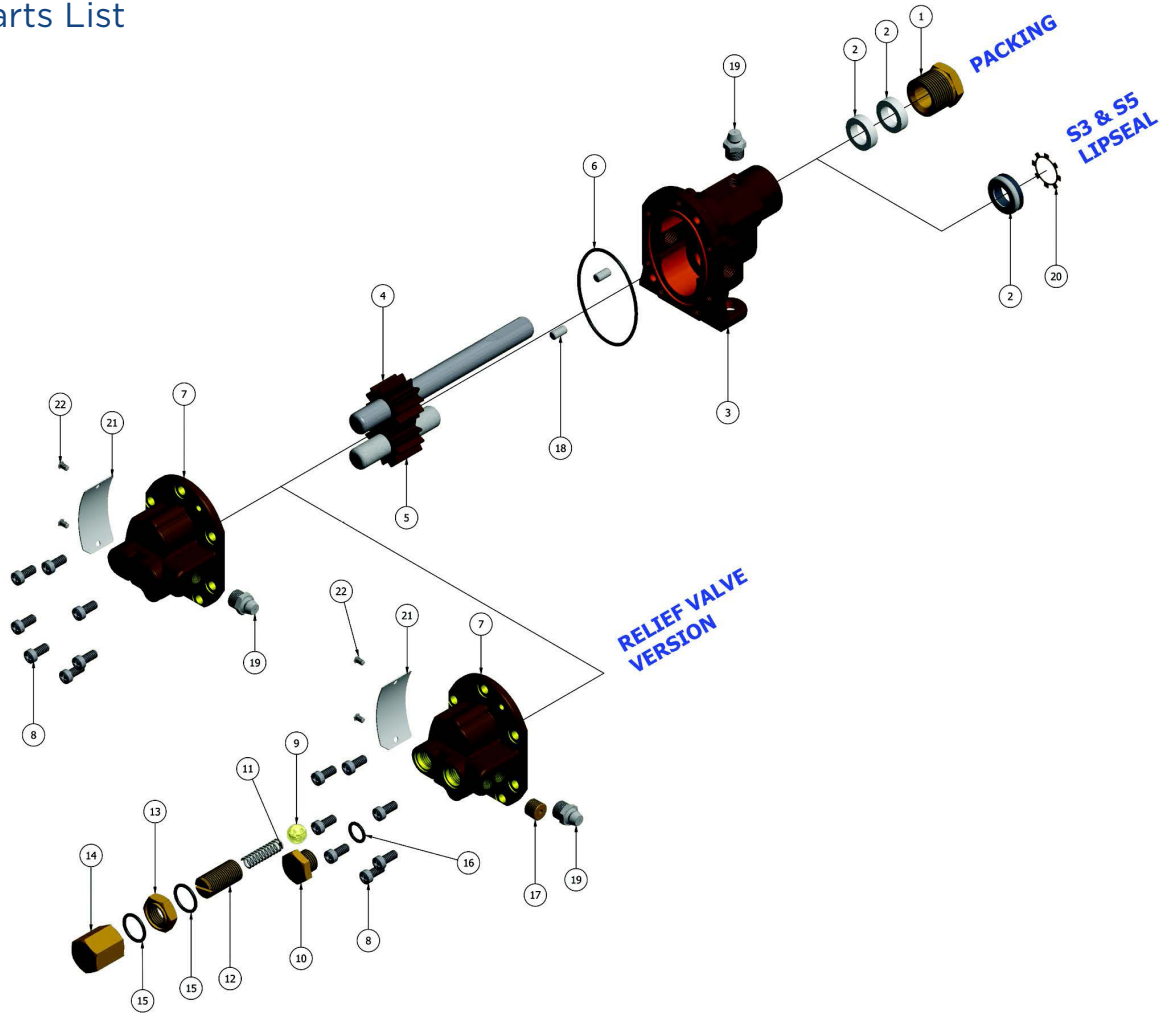
12500 South Pulaski Road  
Alsip, IL 60803, USA  
Phone (800) 448.1668



# OBERDORFER®

An Ingersoll Rand Business

## Parts List



	Seal Arrangement	1	2	3	4	5	6	7	8	9	10	11	12	13	
		Packnut	Packing	Lip Seal	Body	Drive Gear Ass'y	Idle Gear Ass'y	O-Ring	Cover	Screw	Ball	Plug Nut	Spring	Adj. Screw	Locknut
<b>Model</b>		Qty. 1	Qty. 2	Qty. 1	Qty. 4	Qty. 1	Qty. 1	Qty. 1	Qty. 1	Qty. 7	Qty. 7	Qty. 1	Qty. 1	Qty. 1	Qty. 1
OBN1000LE	Packing	OB1892	OB5481	NA	OB9311PBIN-1	OB32110	OB32110	OB9797-033	OB9314PN5N	OB5385	NA	NA	NA	NA	NA
OBN1000LES3	NBR Lip	NA	NA	OB5007	OB9311PB2N-1	OB32110	OB32110	OB9797-033	OB9314PN5N	OB5385	NA	NA	NA	NA	NA
OBN1000LES5	FKMLip	NA	NA	OB7580	OB9311PB2N	OB32110	OB32110	OB9797-033	OB9314PN5N	OB5385	NA	NA	NA	NA	NA
Relief Valve Versions: OBN1000LRE, OBN1000LRES3 & OBN1000LRES5									OB9314PN5B-1	OB5809	OB5775R	OB5806	OB5766	OB5774D	

Model	14	15	16	17	18	19	20	21	22	Repair Kit*
	Bypass Nut	O-Ring	O-Ring	Pipe Plug	Dowel Pin	Grase Fitting	Lock Ring	Tag	Tag Screw	
<b>Model</b>	Qty. 1	Qty. 1	Qty. 1	Qty. 1	Qty. 2	Qty. 2	Qty. 1	Qty. 1	Qty. 2	
OBN1000LE	NA	NA	NA	NA	OB8885	OB5390	NA	OB9344	OB9345	OB12295
OBN1000LES3	NA	NA	NA	NA	OB8885	OB5390	NA	OB9344	OB9345	OB12295
OBN1000LES5	NA	NA	NA	NA	OB8885	OB5390	OB7626	OB9344	OB9345	OB11266
Relief Valve Versions:	OB5767	OB9797-012	OB9797-012	OB6052						

\* All Repair Kits contain items 2, 4, 5, 6 & 20



12500 South Pulaski Road  
Alsip, IL 60803, USA  
Phone (800) 448.1668