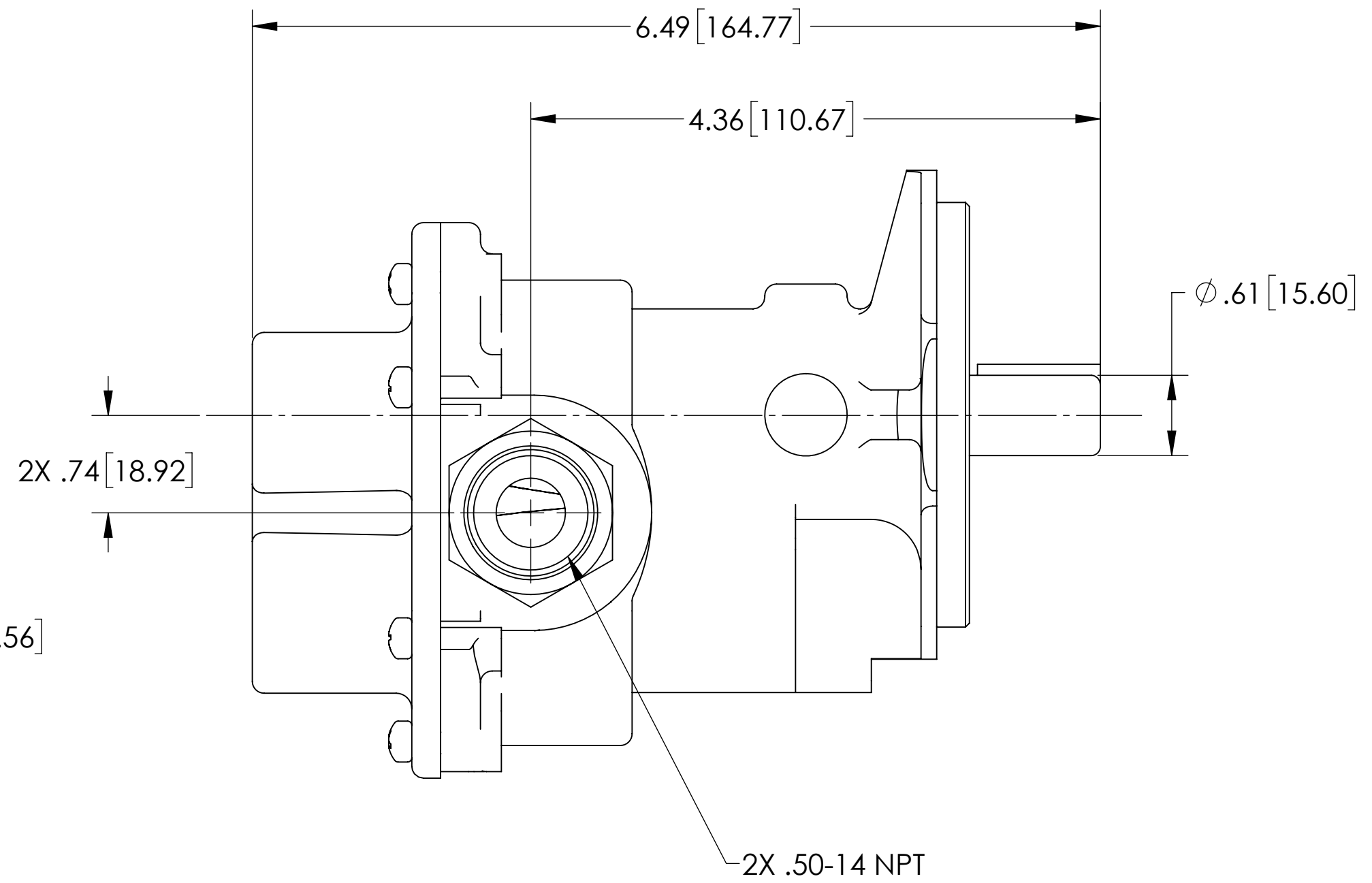
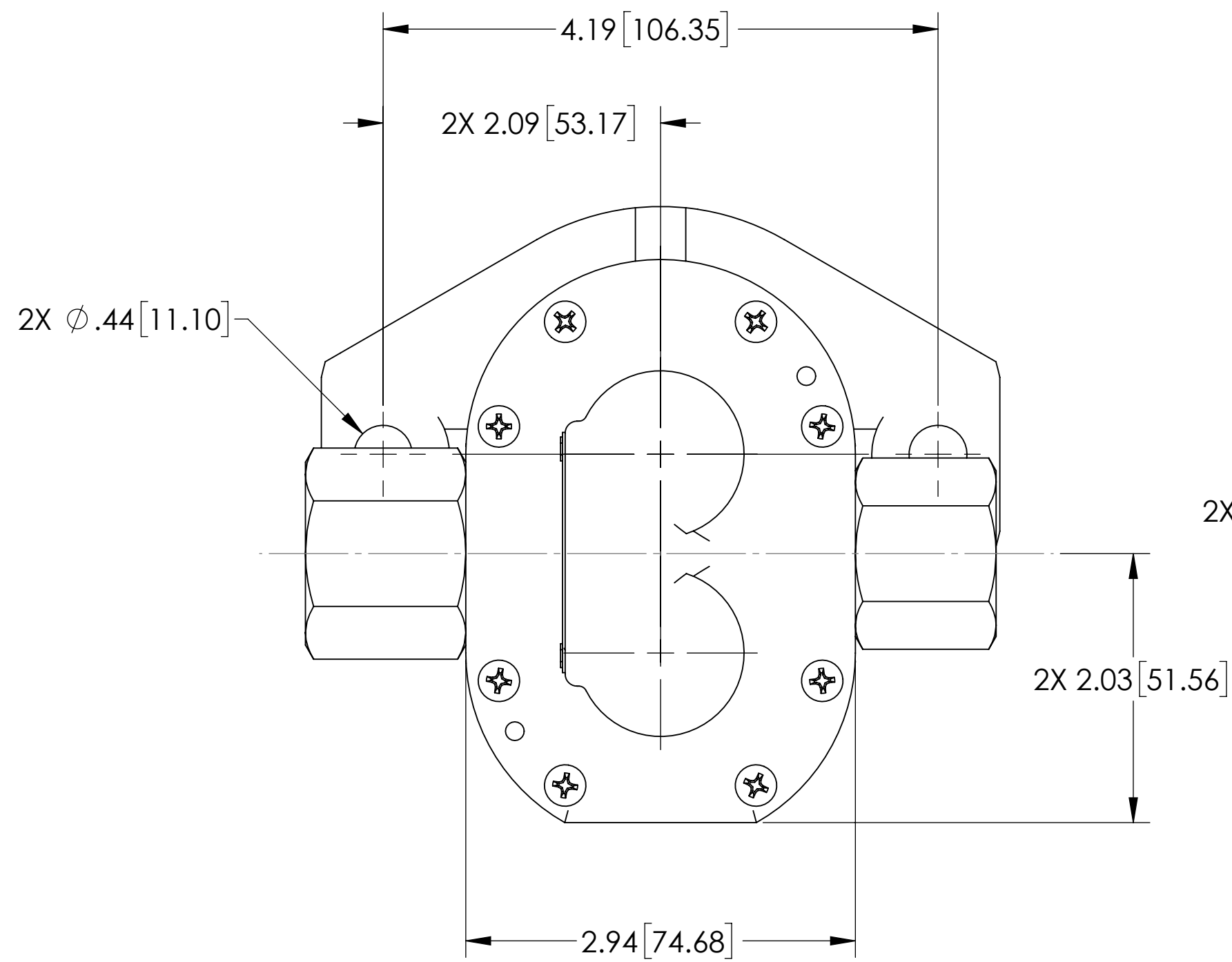
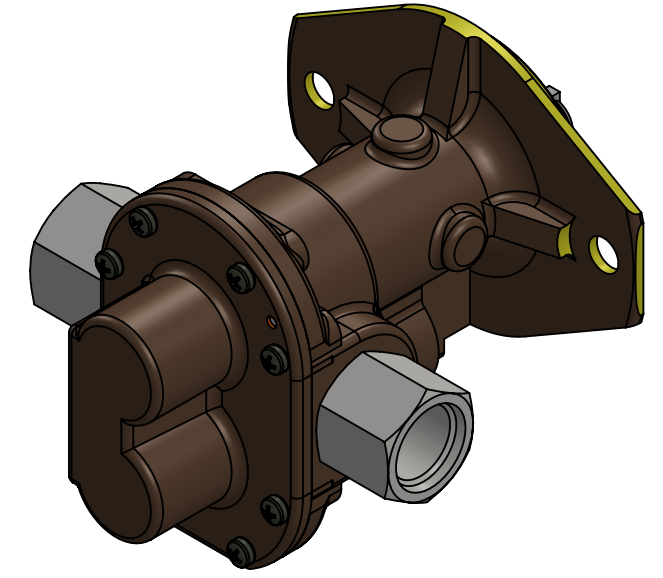


4

3

2

1



FABRICATE PER: MPOB-PS-02 UNLESS OTHERWISE SPECIFIED: REMOVE BURRS & BREAK EDGES .005 [0.127] DIMENSIONS: INCHES [MM] MACHINE FINISH 125 [3.2] 2 PLACE DIM ± .01 [0.254] 3 PLACE DIM ± .005 [0.127] ANGULAR DIM ± .1 CONCENTRICITY Ø.005 [0.127] DO NOT SCALE				THE INFORMATION IN THIS DOCUMENT IS THE PROPERTY OF INGERSOLL RAND. IT IS NOT FOR PUBLIC DISCLOSURE. POSSESSION OF THIS INFORMATION DOES NOT CONVEY ANY RIGHT TO LOAN, SELL, OR DISCLOSE THE INFORMATION. UNAUTHORIZED REPRODUCTION OR USE OF THE INFORMATION IS PROHIBITED.				INFORMATION CONTAINED HEREIN IS SUBJECT TO THE EXPORT ADMINISTRATION REGULATIONS (EAR) OF THE UNITED STATES OF AMERICA AND EXPORT CLASSIFIED UNDER THOSE REGULATIONS AS (ECCN EAR99). NO PORTION OF THIS DOCUMENT CAN BE RE-EXPORTED FROM THE RECIPIENT COUNTRY OR RE-TRANSFERRED OR DISCLOSED TO ANY OTHER ENTITY OR PERSON NOT AUTHORIZED TO RECEIVE IT WITHOUT THE PRIOR AUTHORIZATION OF INGERSOLL RAND. THIS NOTICE SHALL BE ATTACHED TO ANY REPRODUCED SECTION OF THIS DOCUMENT.			
DRAWN		DATE		NAME		MP		OBERDORFER		IR Ingersoll Rand.	
ML		10/17/25		GEAR PUMP VITON MECH SAE MOUNT							
CHECKED		DATE		SCALE		PART NUMBER		MATERIAL		REV	
MK		10/17/25		1:2		OBN994S17-09		[SEE BOM]		A	
APPROV.		SIZE		MADE FROM		WEIGHT		SHEET			
TP		C		N/A		7.08 LBS.		1 OF 2			

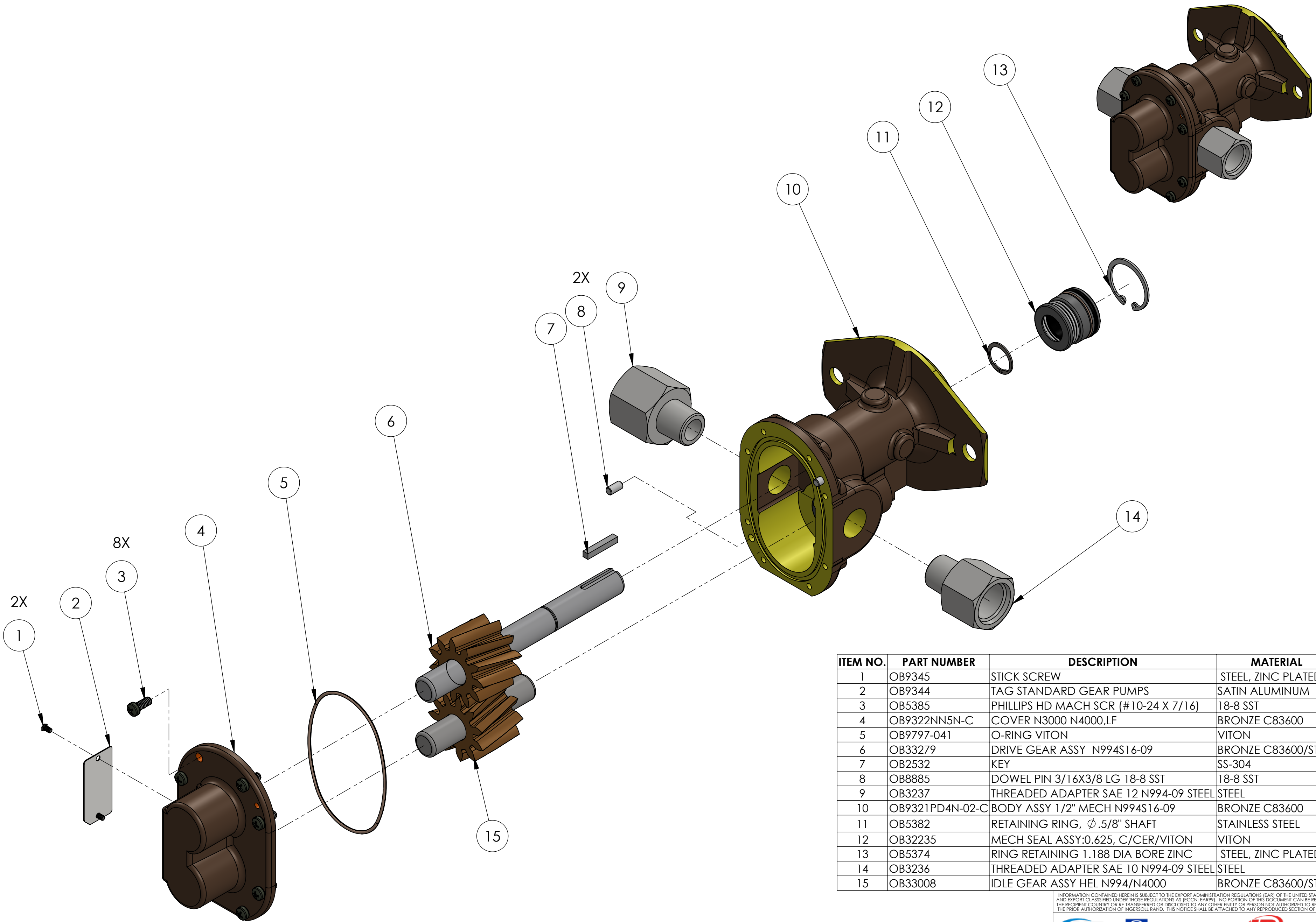
ZONE	REV.	DESCRIPTION	BY	DATE	CHANGE NO.
A		INITIAL RELEASE AND DRAWN TO SW	ML	10/17/25	
REVISIONS					

4

3

2

1



ITEM NO.	PART NUMBER	DESCRIPTION	MATERIAL	QTY.
1	OB9345	STICK SCREW	STEEL, ZINC PLATED	2
2	OB9344	TAG STANDARD GEAR PUMPS	SATIN ALUMINUM	1
3	OB5385	PHILLIPS HD MACH SCR (#10-24 X 7/16)	18-8 SST	8
4	OB9322NN5N-C	COVER N3000 N4000,LF	BRONZE C83600	1
5	OB9797-041	O-RING VITON	VITON	1
6	OB33279	DRIVE GEAR ASSY N994S16-09	BRONZE C83600/STEEL	1
7	OB2532	KEY	SS-304	1
8	OB8885	DOWEL PIN 3/16X3/8 LG 18-8 SST	18-8 SST	2
9	OB3237	THREADED ADAPTER SAE 12 N994-09 STEEL	STEEL	1
10	OB9321PD4N-02-C	BODY ASSY 1/2" MECH N994S16-09	BRONZE C83600	1
11	OB5382	RETAINING RING, Ø.5/8" SHAFT	STAINLESS STEEL	1
12	OB32235	MECH SEAL ASSY:0.625, C/CER/VITON	VITON	1
13	OB5374	RING RETAINING 1.188 DIA BORE ZINC	STEEL, ZINC PLATED	1
14	OB3236	THREADED ADAPTER SAE 10 N994-09 STEEL	STEEL	1
15	OB33008	IDLE GEAR ASSY HEL N994/N4000	BRONZE C83600/STEEL	1

INFORMATION CONTAINED HEREIN IS SUBJECT TO THE EXPORT ADMINISTRATION REGULATIONS (EAR) OF THE UNITED STATES OF AMERICA AND EXPORT CLASSIFIED UNDER THOSE REGULATIONS AS (ECCN EAR99). NO PORTION OF THIS DOCUMENT CAN BE RE-EXPORTED FROM THE RECIPIENT COUNTRY OR RE-TRANSFERRED OR DISCLOSED TO ANY OTHER ENTITY OR PERSON NOT AUTHORIZED TO RECEIVE IT WITHOUT THE PRIOR AUTHORIZATION OF INGERSOLL RAND. THIS NOTICE SHALL BE ATTACHED TO ANY REPRODUCED SECTION OF THIS DOCUMENT.



NAME
GEAR PUMP VITON MECH SAE MOUNT

SCALE	PART NUMBER	MATERIAL	REV
1:2	OBN994S17-09	(SEE BOM)	A
SIZE	MADE FROM	WEIGHT	SHEET
C	N/A	7.08 LBS.	2 OF 2