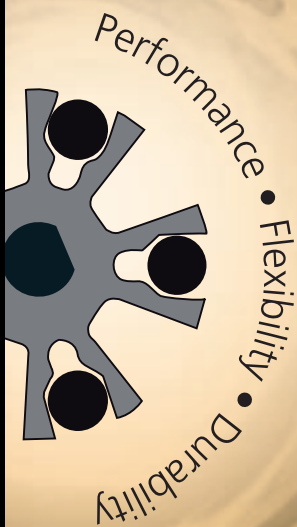


**SHERTECH®**

# Roller Pumps

---



  
A WICOR COMPANY  
**INDUSTRIAL PRODUCTS GROUP**

# SHERTECH<sup>®</sup>

Hypro Corporation's roller pumps provide an alternative positive displacement technology for a wide range of industrial, agricultural and commercial applications. Our roller pumps use a unique non-clogging design, which eliminates downtime due to lockups.

Hypro Industrial Products Group is excited to bring you the complete roller pump line from SherTech, to provide your customers with innovative systems solutions.

## Performance

Pumps are capable of flow rates up to 10 GPM and pressures up to 150 PSI, depending on the properties of the liquid.

## Flexibility

Three types of body construction are available. Cast iron meets the requirements of transferring a broad range of fluids. Ni-Resist is a high-nickel-content alloy for better corrosion resistance. Silver Series XL™ bodies have a custom alloy that provides the best corrosion resistance available.

## Durability

SherTech pumps are simple in construction with a minimum number of moving parts for less maintenance and longer life. Design features include a wide variety of flow ranges and interchangeable rollers.

Regardless of the SherTech pump you select, our team of customer service representatives and engineers are available to provide innovative solutions to your most complex pumping problems. If you have any questions you can reach our staff at **(800) 471-0460**.



# NR Hot Oil Series



Model Number: NR5

## Features

## Benefits

- \* Non-clogging design . . . . . Eliminates downtime due to locked-up pump
- \* Consistent high vacuum . . . . . Maximizes speed and efficiency of filtration
- \* Extremely quiet operation . . . . . Noise-free environment
- \* Gently handles shear-sensitive oils . . . . . Extends life of oil
- \* Compact design . . . . . Fits in tight spaces
- \* Mechanical seals . . . . . High-vacuum, long-term reliability
- \* High-temperature Teflon rollers . . . . . Increased longevity and quiet operation
- \* Mounted to D-slot 56C motors . . . . . Durability
- \* Bi-rotational flow . . . . . Allows pumping in forward and reverse direction
- \* Best value in the marketplace . . . . . Low purchase cost, long-term reliability
- \* High-temperature operations . . . . . Temperatures up to 400° F
- \* 90° port rotation . . . . . Allows for vertical or horizontal port configuration

## MODEL ORDERING CODES AND OPTIONS

Example Model: NR5-PH

Series	Type	Size (Ports/HP)	Options
N: NSF	R: Roller	3: 3.8 GPM (½" / ½" HP) 5: 5.7 GPM (½" / ½" HP) 5-S: 5.7 GPM (½" / ½" HP) 8: 8.1 GPM (¾" / ½" HP)	- PH*: Pump Head only

\* Pump head not available with NR5-S "Short ports"

Notes: NR5-S "Short ports" pump is 1" narrower and can be rotated in 45° increments

NR3 comes with ½ HP ODP motor

NR5, NR5-S and NR8 come with ½ HP ODP motor

# 500 Series



**Model Number:  
0505C-DH**



**Model Number:  
0505C-DE**



**Model Number:  
0507C-DP**

## Features

## Benefits

- \* Non-clogging design . . . . . Eliminates downtime due to locked-up pump
- \* Consistent high vacuum . . . . . Maximizes speed and efficiency of filtration
- \* Extremely quiet operation . . . . . Noise-free environment
- \* Gently handles shear-sensitive oils . . . . . Extends life of oil
- \* Compact design . . . . . Fits in tight spaces
- \* Mechanical seals . . . . . High-vacuum, long-term reliability
- \* High temperature Teflon rollers . . . . . Increased longevity and quiet operation
- \* Bi-rotational flow . . . . . Allows pumping in forward and reverse direction
- \* High temperature operations . . . . . Temperatures up to 400° F
- \* Optional Buna N Roller . . . . . Allows for higher pressure
- \* Multiple drive options . . . . . Suits multiple configuration and speed applications

## MODEL ORDERING CODES AND OPTIONS

**Example Model: 0505C-DP**

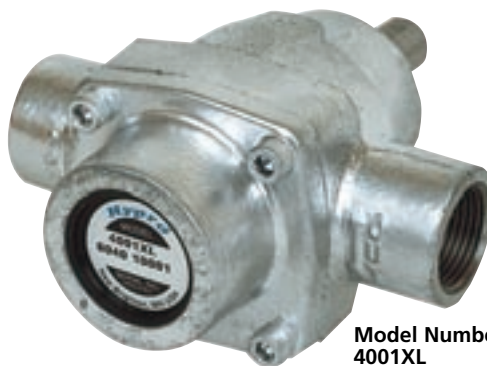
05      05      C      - DP

Series	Size (Ports)	Materials	Mounting
05: 500 series roller pump	03: 3 GPM (½") 05: 5 GPM (½") 07: 7 GPM (½")* 10: 10 GPM (¾")	C: Cast iron	-DE: 56C frame motor mount (Pump Head only) -DP: Pedestal -DH: Pedestal Hollow shaft -M**: Motor mount with motor included (½ HP with the 3/5/7 GPM units) 10 GPM motor not available -MX**: Motor mount Pump Head only (56C frame D-slot motor)

\* 507-M and 507-MX have ¾" ports

\*\* M and MX are the industrial versions of the NR hot oil series (See photo on previous page)

# 4000 Series (Silver Series XL, Ni-Resist or Cast Iron)



Model Number:  
4001XL



## Features

## Benefits

- \* Silver Series XL material ..... Maximum chemical resistance for aggressive and high-purity fluids
- \* Ni-Resist material ..... High chemical resistance for aggressive fluids
- \* Self-priming design ..... Eliminates need for manual priming
- \* Standard Viton lip seals ..... Superior chemical resistance
- \* Hollow shaft option ..... Allows pump to be mounted to 42 or 48 frame motors
- \* Standard Super Rollers ..... Provides the chemical resistance of polypropylene with the life of nylon
- \* Teflon roller option ..... Provides additional chemical resistance

## MODEL ORDERING CODES AND OPTIONS

Example Model: 4101XL-EH

Series (Port Size)	Materials	Options
4001: 9 GPM @ 1800 RPM max RPM 1900 (¾")  4101: 7 GPM @ 2600 RPM max RPM 2600 (¾")	C: Cast iron  N: Ni-resist  XL: Silver Series XL	-H: Hollow shaft -R: Reverse rotation (ccw rotation)** -EH: 12VDC Motor -T3: Poly Rollers

\* Max Pressure of 50 PSI

\*\* Standard rotation is clockwise when viewed from pump shaft end

Note: Consult factory for Teflon Rollers, Buna N roller and Buna N seal options

# Performance Data

