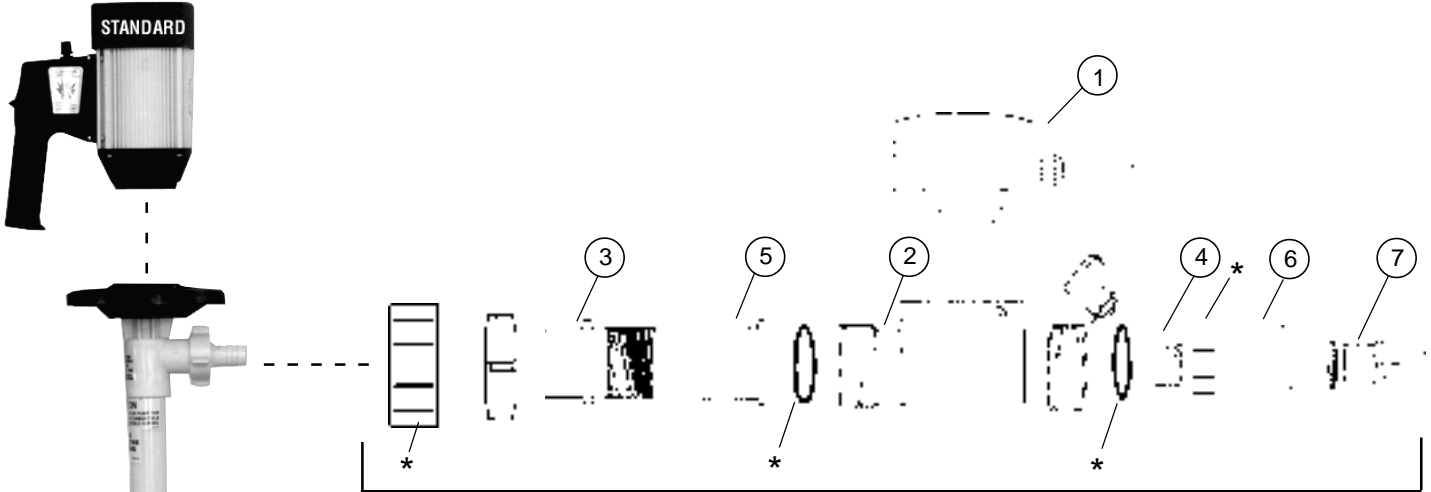


BATCH CONTROL SYSTEMS REPLACEMENT COMPONENTS



Flow Chamber Assembly

ITEM NO.	PART NUMBER	DESCRIPTION
1	448338M	Batch Control Module, 115/220V (cable connection included)
	USPPFC	1" PP True Union Flow Chamber Assembly (Includes the following items 2-7)
2	423958S	1" PP True Union Flow Chamber
3	US61652	1" PP MNPT pump outlet fitting
4	US61653	1" PP MNPT flow meter outlet fitting
5	US61654	1" PP FNPT flow meter inlet fitting
6	US61655	1" PP check valve
7	US61659	1" PP MNPT hose barb fitting
	USPVDFFC	1" PVDF True Union Flow Chamber Assembly (Includes the following items 2-7)
2	423970S	1" PVDF True Union Flow Chamber
3	US61661	1" PVDF MNPT pump outlet fitting
4	US61662	1" PVDF MNPT flow meter outlet fitting
5	US61663	1" PVDF FNPT flow meter inlet fitting
6	US61664	1" PVDF NPT check valve
7	US61665	1" PVDF MNPT hose barb fitting
MOTOR ONLY		
	SP-280P-BC SP-280P-2-BC SP-ENC-BC SP-ENC-2-BC	115V/1/60 Hz. ODP motor with batch control connection 220V/1/50 Hz. ODP motor with batch control connection 115V/1/60 Hz. TEFC motor with batch control connection 220V/1/50 Hz. TEFC motor with batch control connection

NOTE: See drum pump tube section for replacement components.
See drum pump motor section for replacement components.

* = Part of item #2 flow chamber