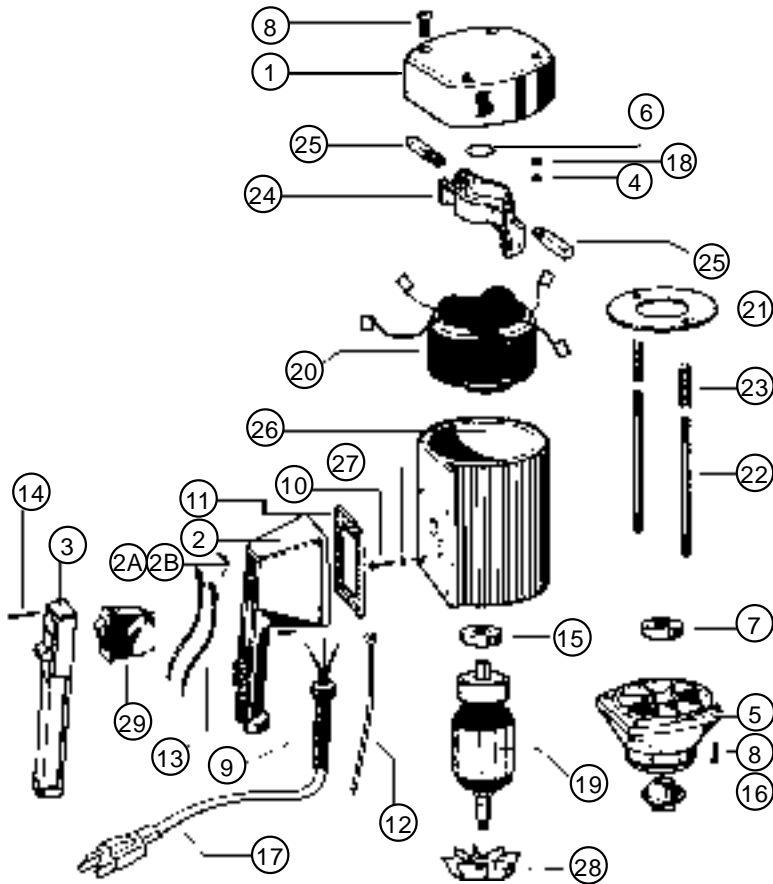




SP-280P OPEN DRIP PROOF MOTOR SERIES

825 WATTS, 1 PHASE, 50-60 CYCLE



SP-280P open motor should not be used to pump flammables.

*Parts interchange with SP-ENC

ITEM NO.	DESCRIPTION	PART NUMBER
1	Motor cover	8000
2*	Switch housing	8001
2A*	Switch housing for variable speed includes potentiometer	
	115V	8004
	220V	8005
2B*	Switch housing for batch control includes potentiometer and BCS port connection	
	115V	8006
	220V	8007
3*	Switch cover	8002
4*	Lock washer	8071
5*	Lower housing	8100
6*	Wave washer	8125
7	Ball bearing	8126
8	Screw for plastic housing	8130P
9*	Screw	8131
10*	Ground screw	8162
11*	Gasket low voltage release (for 220V)	8167 8167LVR
12	Earthing lead	8183
13*	Lead	8185
14*	Screw	8220
15	Ball bearing	8331
16*	Motor coupling	8333
17*	Power cord w/strain relief no plug	
	115V	8360
	220V	8705
18*	Hexagon nut	8448
19	Armature	115V 8502 220V 8701
20	Stator	115V 8503 220V 8702
21	Guide disc	8504
22	Rod connector	8506
23	Pressure spring	8507
24*	Brush holder	8508
25*	Carbon brush	115V 8509 220V 8703
26	Motor housing, plastic	8510P
27	Star washer	8511
28	Fan	8512
29*	Overload switch, 8.5 amp 115V 5 amp 220V low voltage release	8611 8704LVR