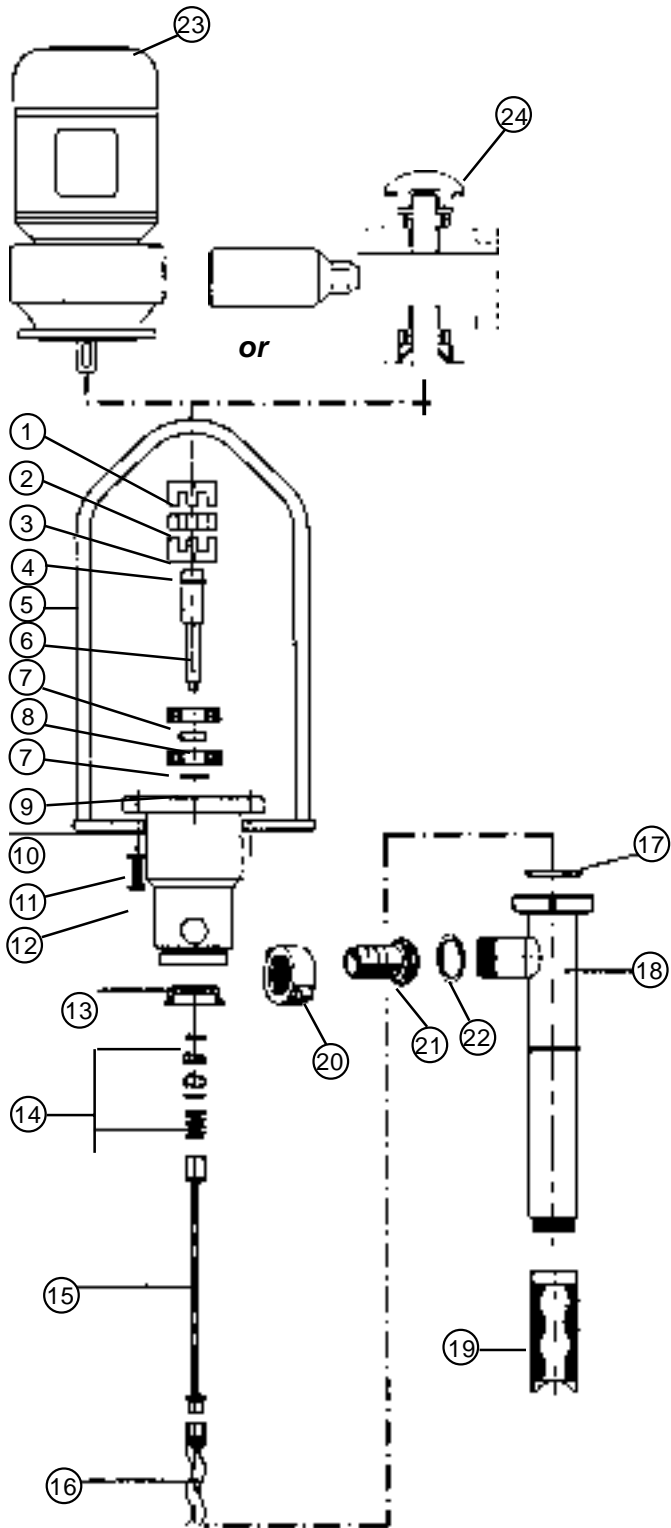




SP-700 HIGH VISCOSITY TRANSFER PUMP FLEXIBLE COUPLING (DR)



ITEM NO.	DESCRIPTION	PART NUMBER
1	Motor coupling	7044
2	Coupling insert	7045
3	Pump coupling	7040
4	Spring pin - 316 SS	7009
5	Handle	7043
6	Pump shaft	7042
7	Bearing	7007
8	Spacer	7041
9	Circle clip	7006
10	Bearing housing - polypropylene - stainless steel	7005
11	Spring washer	7004
12	Hex screw	7003
13	Mechanical seal bushing - 316 SS	7002
14	Mechanical seal assembly - SiC	7008
15	Flexible drive shaft- 316 SS	7011
16	Rotor - 316 SS	12.1 7012-12.1 12.2 7012-12.2 25.1 7012-25.1 25.2 7012-25.2 50.1 7012-50.1
17	PTFE gasket	7014
18	Outer tube assembly	27" 7013-27 39" 7013-39 47" 7013-47
19	Buna-N stator	12.1 7015B-12.1 12.2 7015B-12.2 25.1 7015B-25.1 25.2 7015B-25.2 50.1 7015B-50.1
	PTFE stator	12.1 7016P-12.1 12.2 7016P-12.2 25.1 7016P-25.1 25.2 7016P-25.2 50.1 7016B-50.1
	Viton stator	12.1 7018V-12.1 12.2 7018V-12.2 25.1 7018V-25.1 25.2 7018V-25.2 50.1 7018V-50.1
20	Wing nut	7019
21	Hose barb, 1-1/4" - stainless steel	7020
22	TFE seal	7021
23	Electric motor, 3 phase	Consult Factory
24	Air motor	Consult Factory

Please specify stator construction and ratio of unit when ordering spare parts.

Read and understand operating and safety instructions before operating any Standard Pump.