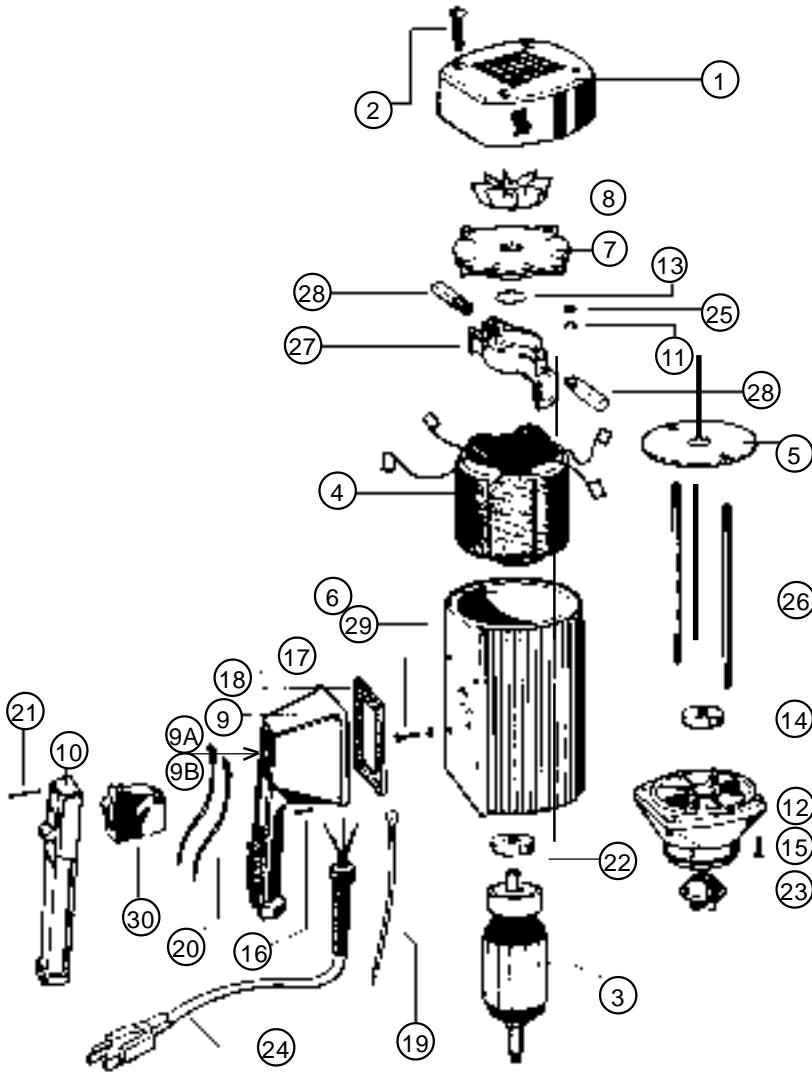




# SP-ENC TEFC MOTOR SERIES

## 825 WATTS, 1 PHASE, 50-60 CYCLE



**SP-ENC motor should not be used to pump flammables.**

\*Parts interchange with SP-280P

ITEM NO.	DESCRIPTION	PART NUMBER
1	Motor cover	3000
2	Screw	3130
3	Armature 115V 220V	3502 3701
4	Stator 115V 220V	3503 3702
5	Guide disc	3504
6	Motor housing	3510
7	Bearing cover	3511
8	Fan	3512
9*	Switch housing	8001
9A*	Switch housing for variable speed includes potentiometer 115V 220V	8004 8005
9B*	Switch housing for batch control includes potentiometer and BCS port connection 115V 220V	8006 8007
10*	Switch cover	8002
11*	Lock washer	8071
12*	Lower housing	8100
13*	Wave washer	8125
14*	Ball bearing	8126
15	Screw	8130
16*	Screw	8131
17*	Ground screw	8162
18*	Gasket Low voltage release (for 220V)	8167 8167LVR
19	Earthing lead	8183
20	Lead	8185
21*	Screw	8220
22	Ball bearing	8331
23*	Motor coupling	8333
24*	Power cord w/strain relief, 115V no plug 220V	8360 8705
25*	Hexagon nut	8448
26	Rod connector	3703
27*	Brush holder	8508
28*	Carbon brush, 115V 220V	8509 8703
29*	Star washer	8511
30*	Overload switch, 8.5 amp 115V 5 amp 220V low voltage release	8611 8704LVR