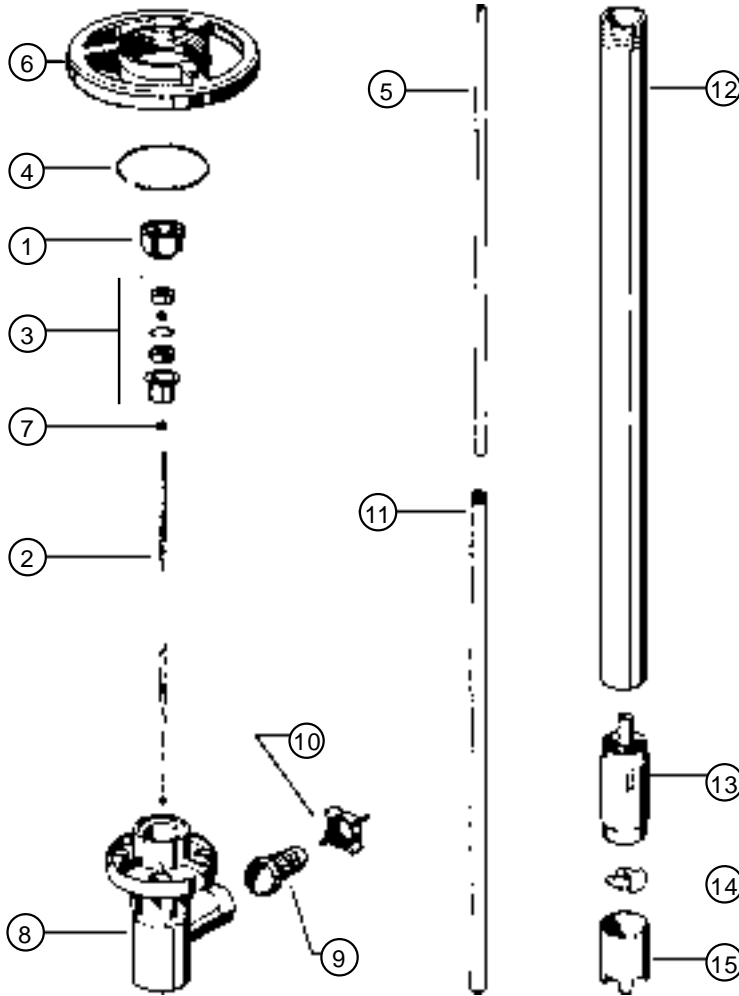




# SP-PVDF SEAL-LESS PVDF PUMP TUBE 27" - 39" - 47"



ITEM NO.	DESCRIPTION	PART NUMBER
1*	Pump coupling	1004
2	Drive shaft, C276 27" 39" 47"	1005 1006 1007
3*	Bearing unit assembled - 2 each Viton shielded bearings, spacer, snap ring, bearing can	1038
4*	Snap ring	1508
5	Guide sleeve - TFE 27", 39", 47"	1514
6*	Hand wheel	1842
7	V-seal - TFE	4000
8	Discharge housing	4028
9	Hose barb, 3/4" 1"	4051 4082
10	Wing nut	4106
11	Inner tube, 27" 39" 47"	4600 4601 4602
12	Outer tube, 27" 39" 47"	4604 4603 4605
13	Pump housing including 6038C pure carbon bushing	4607
14	Rotor - PVDF High head rotor	4608 4608HH
15	Pump foot High head pump foot	4609 4609HH

**PVDF pumps should not be used to pump flammables.**

\* Parts interchange with polypropylene and stainless models.