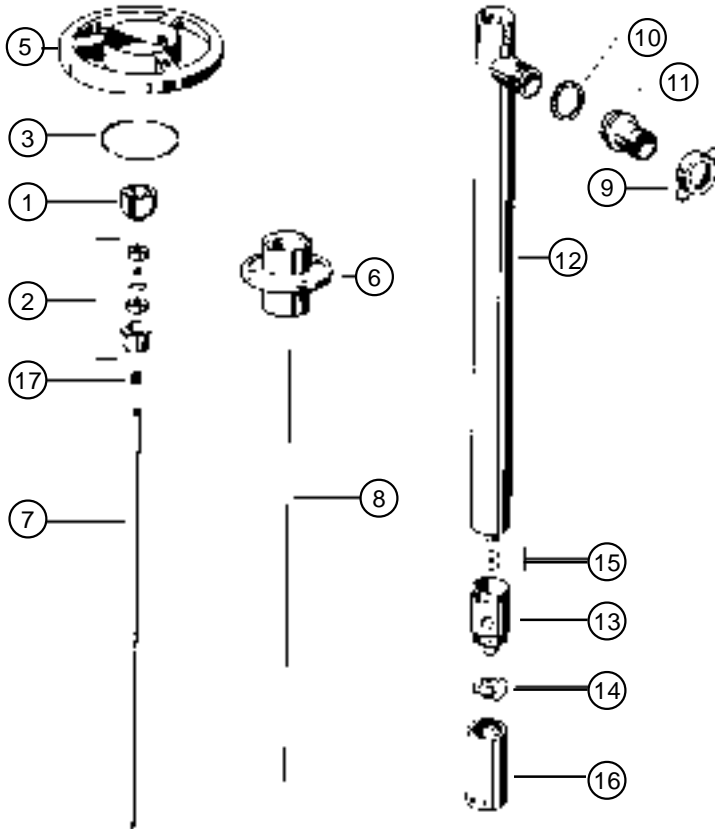




# SP-SS SEAL-LESS 316 SS PUMP TUBE

**27" - 39" - 47" - 60" - 72"**



ITEM NO.	DESCRIPTION	PART NUMBER
1*	Pump coupling	1004
2*	Bearing unit assembled — 2 each Viton shielded bearings, spacer, snap ring, bearing can	1038
3*	Snap ring	1508
5*	Hand wheel	1842
6	Connection flange	2000
7	Drive shaft, 316SS	27" 2027 39" 2028 47" 2029 60" 2709 72" 2710
8	TFE guide sleeve	27" 2031 39"/47" 2032 60" 2711 72" 2712
9	Wing nut	2068
10	TFE seal	2195
11	Hose barb, 1"	2196
12	Inner/outer tube assembly	27" 2700 39" 2701 47" 2702 60" 2713 72" 2714
13	Pump housing with pure carbon 6038C bushing	2704
14	TFE rotor High head impeller	2706 2706 HH
15	'O'-ring, Viton, 2 per set	2707
16	Pump foot High head pump foot	2708 2708 HH
17	V-Seal, TFE	4000

\* Parts interchange with polypropylene and PVDF models.

**Read and understand operating and safety instructions  
before operating any Standard Pump.**