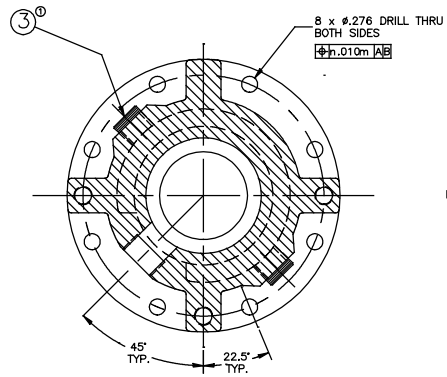


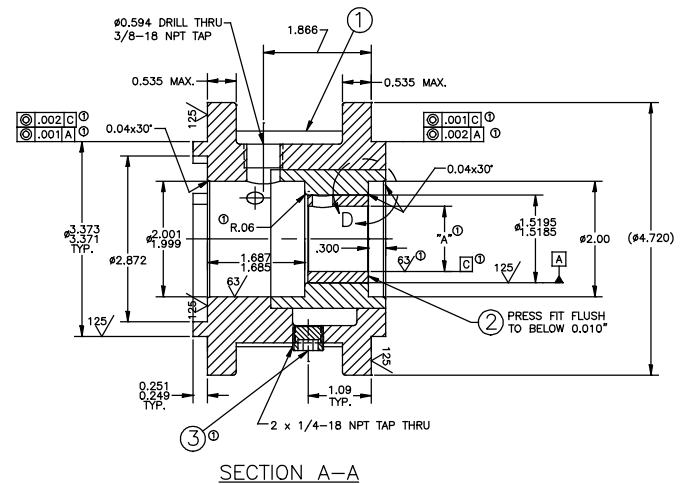
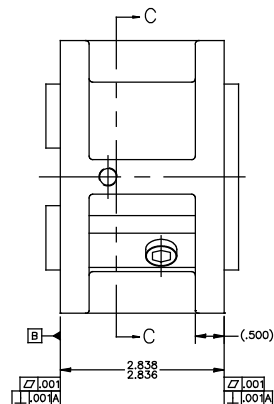
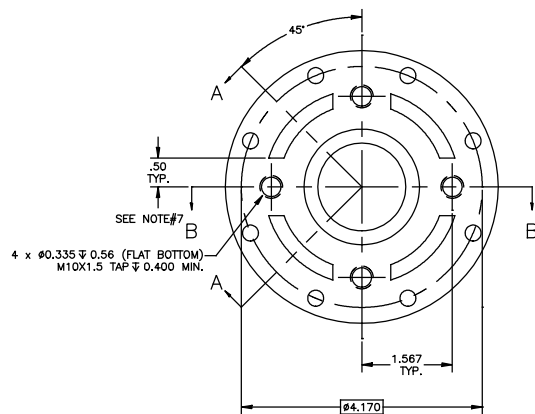
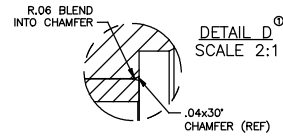
SECTION B-B
(SHOWN WITHOUT ITEM #2 BUSHING)



SECTION C-C

Parts list				
Item	Description	Material	Part No.	Qty.
①	JACKETED BRACKET BLANK	TPC #98	G015SU144-B	1
②	BRACKET BUSHING	CARBON	G015 SU 50-B	1
③	1/4-18 NPT PIPE PLUG	STEEL	P401-2	2

BRACKET ASSEMBLY CLEARANCE		
PART #:	"A"	"B"
G015SI144-1	0.1288	1.2388
G015SI144-2	0.1318	1.3018
G015SI144-3	0.1348	1.3648
G015SI144-4	0.1378	1.4278



SECTION A-A

NOTES:

1. ALL MACHINE SURFACES UNLESS OTHERWISE NOTED.
2. BREAK ALL SHARP CORNERS .010 x 45°.
3. MACHINE RADII ARE R.020 MAX. UNLESS OTHERWISE NOTED.
4. HYDROSTATIC TEST PER TP #1202.
5. USE GAGE #G20481 WITH PITCH DIAMETER 0.2712 AT GAGING NOTCH.
6. MILLSLOT FLUSH WITH TO .010" ABOVE SURFACE.

230

G015 JACKETED BRACKET ASSEMBLY

TUTHILL Tuthill Pump Division

UNLESS OTHERWISE SPECIFIED MACHINE FINISH

SEE NOTES

DATE: 11.26.03

DESIGNED: EEE 11.26.03

CHECKED: EEE 11.26.03

APPROVED: EEE 11.26.03

SCALE: 1:1

TOLERANCE FRACTIONS = ±1/32

DIMENSIONS = ±0.005

ANGLES = ±1/2

2. REVISED PER QP 10950

1.1. REVISED PER QP 10950

10. REVISED PER QP 10950

DATE: 11.26.03

DATE: 11.26.03

DATE: 11.26.03

SEE CHART 26621-D