



FIPs are self priming and handle clean, particle laden, shear sensitive, and air entrained liquids!



Flexible Impeller Pump (FIP) - HOW IT WORKS:

- A. As the flexible impeller blades leave the cam, the cavities between them increase in size and create a vacuum which draws in the liquid.
- B. Once the blades clear the inlet port, the liquid is captured within the cavities formed between the blades and the housing.
- C. As the blades contact the offset cam area of the pump housing and compress the cavities between them, liquid is forced out of the pump discharge.

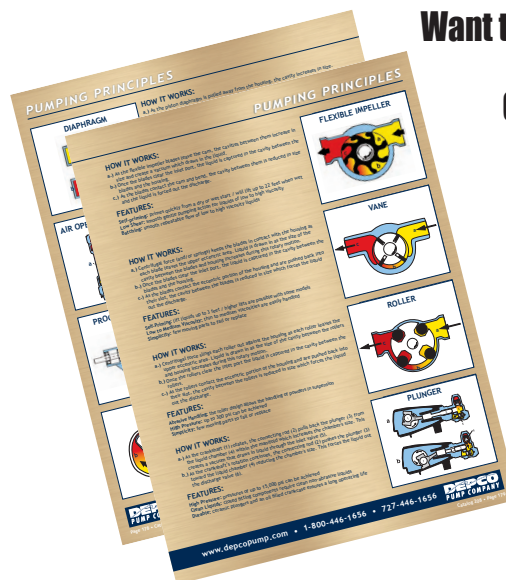
INSIDE THIS ISSUE

PG 2
FIPs vs AODDs

PG 3
Pump Geek Spotlights

PG 4
Depco Workiversaries

Want the Best Pump Geek Catalog in the World?



Want to know how other pumps work?

Check out pages 178-179

Call or email to order your
FREE Copy Today and ask
for your very own

PUMP GEEK SUNGLASSES!
www.depcopump.com



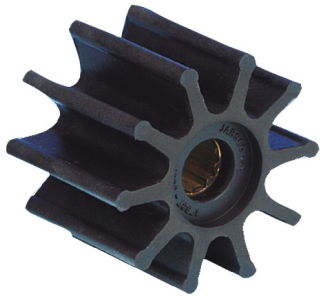
Contact Our Pump Geeks!
17 Geeks at Your Service

727-446-1656 | 800-446-1656
sales@depcopump.com

What is a FIP Pump?

The Depco Pump Geeks Have the Answers!

Simplicity of Design - A single rotating part at its heart!



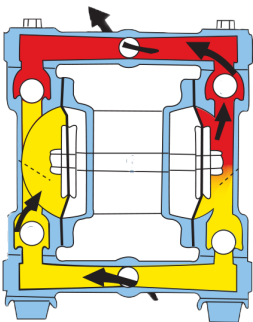
1. A single, easy to replace part, is at the heart of all FIP pumps.
2. Available in multiple materials (Neoprene, Nitrile, EPDM, & Viton). FIPs can handle a wide range of industrial and sanitary/hygienic liquids.
3. FIVE MINUTES! That's usually all it takes to replace the impeller in any size FIP!

Meet Our #1 Pump Geek Jason Hebert!



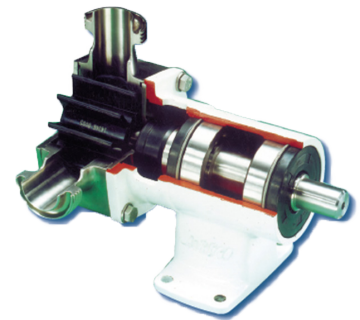
FIPs are used in the dairy, wine, food, chemical, and industrial process industries on applications including transferring, dispensing, filling, sampling, filtering, coating, cooling, emptying sumps, and removing spills.

FIPs beat AODDs (Air Operated Diaphragms) in 4 areas!



1. **Smooth Flow:** FIPs can provide a smooth even flow where AODDs severely pulsate.
2. **Bi-Directional:** AODDs only move fluid in on directions. FIPs are reversible.
3. **Electric, Hydraulic or Air Driven:** AODDs cannot operate without compressed air. FIPs can be driven by electric, air, or hydraulic power.
4. **More Energy Efficient:** FIPs driven electrically are more energy efficient than AODDs driven by compressed air.

Air operated diaphragm pumps are used everywhere because they are easy to apply and difficult to destroy. However some applications require features not found in AODDs.



316 SS Housing
Sanitary or Industrial – Up to 100 GPM



Pump Geek Spotlight: Joe F.

Twenty years at Depco and I still love coming to work every day! 🚢 ⚙️

My role keeps me on my toes—balancing the complexities of international export/import law with the technical world of Marine and Industrial pumps. One hour I'm assisting a luxury yacht, and the next, I'm helping a chocolate manufacturer in Germany keep their production lines moving.

When I'm off the clock, my life is centered around my faith, my ministry degree, and my family. You can usually find us at a local car show or the shooting range. 🏠 🚗 🎯



DEPCO
PUMP COMPANY
#pumpgeeks 🧐

Pump Geek Spotlight: Dorian L.

Dorian joined the Depco family 25 years ago, and since then, he has become a cornerstone of our success. As a key member of our marine sales team, Dorian plays an essential role in our daily operations, bringing a level of expertise that is truly special. A self-proclaimed "pump geek," Dorian can answer almost any marine question thrown his way, a testament to the consistency and dedication he has shown over the decades.

One of Dorian's greatest strengths is his ability to assist our Spanish-speaking clients. Being bilingual is a reflection of the diversity and long-term opportunities we aim to create here at Depco. He is known throughout the office as a hard worker who is always available to go the extra mile. His reliability, positive attitude, and "team-first" mindset continue to make a meaningful impact every single day—it is easy to see why Dorian loves the world of marine sales.

Dorian's passion for service extends well beyond the office. Outside of work, he enjoys doing charitable work within the community as a Master Mason. Just this past week, he was seen giving back by volunteering at a Friday night fish fry.

Thank you, Dorian, for your years of dedication, your hard work, and for being such an important part of the Depco story. We are incredibly grateful to have you as part of our family!



DEPCO
PUMP COMPANY
#pumpgeeks 🧐

Pump Geek Spotlight: Jeff C.

Meet Jeff, one of the Pump Geeks on Depco Industrial Sales Team!

Experience isn't just learned; it's built. Jeff has been immersed in the pump business since his teenage years, beginning his journey in his father's family business, a fluid filtration/pump company. Today, with over two decades of experience in the Tampa Bay market, he specializes in high-performance industrial brands including Goulds, Yamada, and Crane. Jeff joined the Depco family 8 years ago and we celebrate his dedication to our pump family. 🏆

Jeff brings a "New England work ethic" to Depco, ensuring our clients get the technical precision they need for their most critical systems.

Outside of Depco, Jeff is a dedicated Tampa Bay sports fan 🚗 🏠 and recently celebrated 30 years of marriage with his wife, Jean. 🌟 Jeff and his wife are also cat parents to their 4-year-old Pearl - brown and white domestic short hair they rescued. 🐾 We're honored to have his expertise—and his great stories—on our team!



DEPCO
PUMP COMPANY
#pumpgeeks 🧐



*Tim S.
14 Years*



*Mike C.
8 Years*



*Josh P.
7 Years*



*Josh F.
4 Years*



*Stacey P.
3 Years*



*Nick G.
1 Year*



*Kim F.
1 Year*



*Clare C.
1 Year*



www.depcopump.com
sales@depcopump.com
1-800-446-1656

