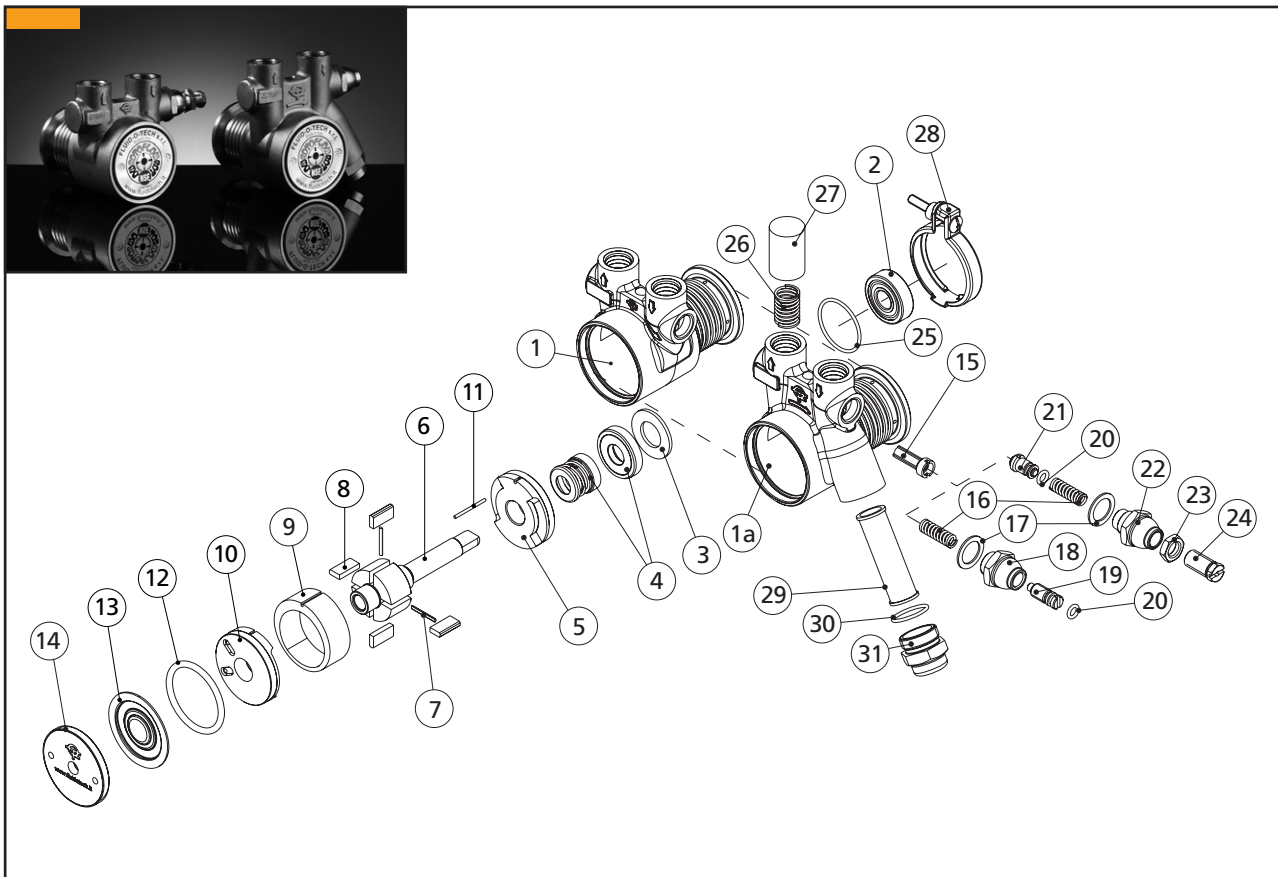


Fluid-o-Tech brass rotary vane pumps spare parts list



| POS. | DESCRIPTION | MATERIAL | CODE | NOTES |
|------|------------------|-----------------|----------|------------|
| 1 | HOUSING | BRASS | 22-01-01 | NPT PORTS |
| | | | 22-01-02 | GAS PORTS |
| 1a | HOUSING W/FILTER | BRASS | 22-01-08 | NPT PORTS |
| | | | 22-01-09 | GAS PORTS |
| 2 | BALL BEARING | STEEL | 90-22-01 | |
| 3 | WASHER | S.S. | 22113 | |
| 4 | MECHANICAL SEAL | GRAPHITE/NBR | 90-40-01 | NSF |
| | | GRAPHITE/VITON® | 90-40-03 | |
| | | GRAPHITE/EPDM | 90-40-05 | |
| 5 | REAR FLANGE | GRAPHITE | 22-03-08 | |
| 6 | ROTOR | S.S. | 22-02-01 | |
| | | | 22164 | 70-100 l/h |
| | | | 22461 | 150 l/h |
| | | | 22008 | 200 l/h |
| | | | 22462 | 250 l/h |
| | | | 22085 | 300 l/h |
| | | | 22463 | 350 l/h |
| 7 | PIN | S.S. | 22244 | 400 l/h |
| | | | 22-04-03 | |
| | | | | |
| 8 | VANE | GRAPHITE | 22-04-03 | |

Fluid-o-Tech brass rotary vane pumps spare parts list

| POS. | DESCRIPTION | MATERIAL | CODE | NOTES |
|------|--------------------------|---------------|----------|---------|
| 9 | LINER | GRAPHITE | 22-05-17 | 70 l/h |
| | | | 22-05-18 | 100 l/h |
| | | | 22-05-19 | 150 l/h |
| | | | 22-05-21 | 200 l/h |
| | | | 22-05-23 | 250 l/h |
| | | | 22-05-24 | 300 l/h |
| | | | 22-05-25 | 350 l/h |
| | | | 22-05-27 | 400 l/h |
| 10 | FRONT FLANGE | GRAPHITE | 22-03-06 | |
| 11 | ALIGNMENT PIN | S.S. | 22-07-01 | |
| 12 | O-RING | NBR | 90-23-13 | NSF |
| | | VITON® | 90-23-21 | |
| | | EPDM | 90-23-14 | |
| 13 | SHAPED DISK | S.S. | 22701 | |
| 14 | THREADED CUP | PLASTIC | 22-08-03 | |
| 15 | OPEN BYPASS VALVE | BRASS | 22307 | |
| | | PLASTIC | 22541 | |
| | | BRASS | 22-16-02 | |
| 16 | SOLID BYPASS VALVE | PLASTIC | 22-16-01 | |
| | | BYPASS SPRING | S.S. | 22505 |
| 17 | WASHER | NYLON® | 22-12-01 | NSF |
| 18 | NORMAL BYPASS NUT | BRASS | 22-20-01 | |
| 19 | NORMAL BYPASS SCREW | BRASS | 22-17-03 | |
| 20 | BYPASS SCREW O-RING | NBR | 90-23-16 | NSF |
| | | VITON® | 90-23-20 | |
| | | EPDM | 90-23-24 | |
| 21 | BYPASS PLUNGER | BRASS | 22522 | |
| | | PLASTIC | 20-18-01 | |
| 22 | BALANCED BYPASS NUT | BRASS | 22-20-02 | |
| 23 | LOCK NUT | BRASS | 22168 | |
| 24 | BALANCED BYPASS SCREW | BRASS | 22-17-02 | |
| 25 | BALL BEARING SEAT O-RING | NBR | 90-23-26 | |
| 26 | RETAINER SPRING | S.S. | 22023 | |
| 27 | CAP | SPONGE | 22044 | |
| 28 | ASSEMBLED CLAMP | S.S. | 22056 | |
| 29 | MAIN FILTER | S.S./PLASTIC | 22421 | 70 mesh |
| 30 | FILTER NUT O-RING | NBR | 90-23-03 | |
| | | VITON® | 90-23-17 | |
| | | EPDM | 90-23-15 | |
| 31 | FILTER NUT | BRASS | 22-20-03 | |

Fluid-o-Tech reserves the right to alter the specifications indicated in this catalogue at any time and without prior notice.

SPARES – BR – 04/09 Ed.

Fluid-o-Tech srl
Via Leonardo da Vinci, 40
20094 Corsico, Milano, Italy
Tel. +39 02 8917071
Fax +39 02 89170799

Fluid-o-Tech Int'l Inc.
161 Atwater St.,
Plantsville CT (USA) 06479
Tel. +1 (860) 276-9270
Fax +1 (860) 620-0193

Fluid-o-Tech Int'l Inc. Japan
203, 2-17-19, Ebara, Shinagawa
Tokyo 142-0063, Japan
Tel. +81 (0) (3) 3783-9660
Fax +81 (0) (3) 3783-9661

Fluid-o-Tech Asia (Beijing) Co., Ltd
Jingwei Industrial Zone,
Beifang Huairou, Beijing, 101400, PRC
Tel. +86 (0) (10) 61684650
Fax +86 (0) (10) 61684651