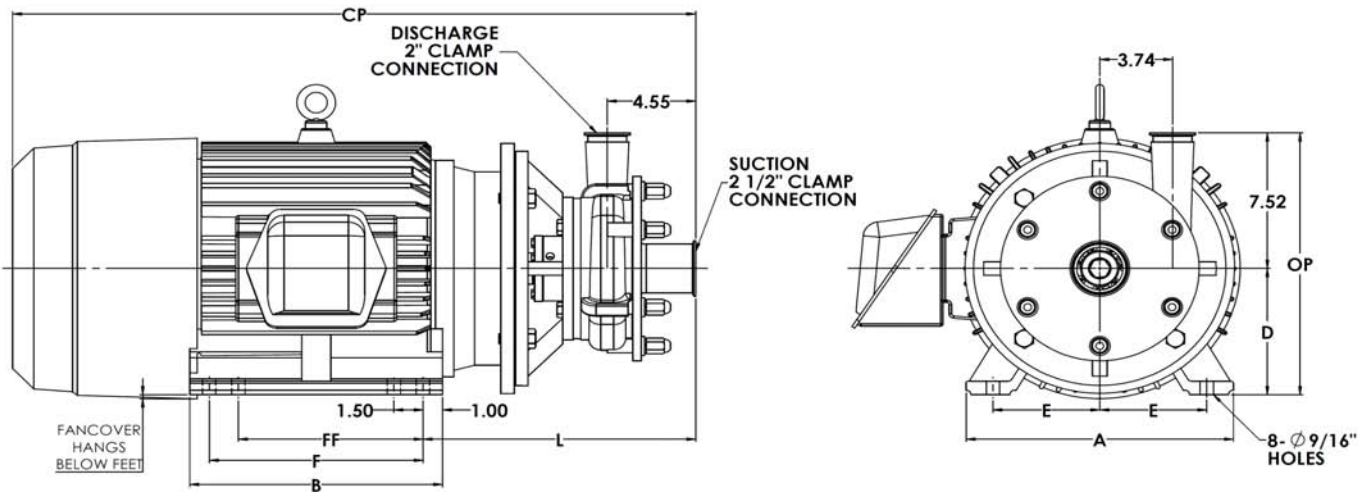
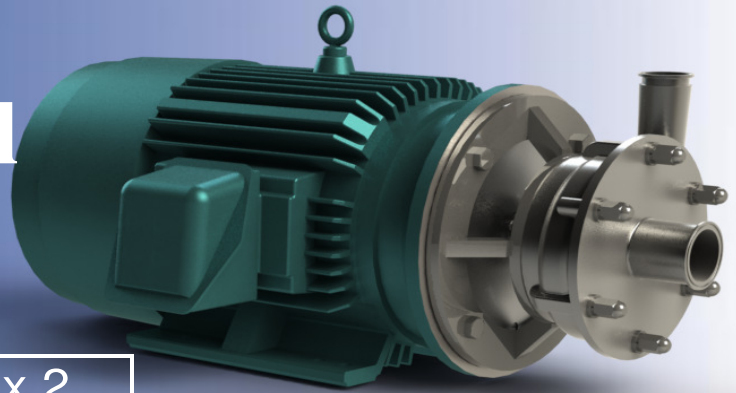


Ampco Centrifugal Pumps

DATA SHEET

MODEL LH-V532 2½ x 2



TEFC MOTOR			DIMENSIONS IN INCHES MILLIMETERS (For Reference Only)										APPROX WEIGHT
HP	RPM	FRAME	A (typ)	B (typ)	D	E	FF	F	ØH	L	CP	OP	LBS Kg
15 HP	3500	284JM	13 3/4	13	7	5 1/2	9 1/2	11	9/16	14.19	35.31	14.51	542
			349	330	178	140	241	279	14	360	897	369	246
20 HP	3500	284JM	13 3/4	13	7	5 1/2	9 1/2	11	9/16	14.19	35.31	14.51	542
			349	330	178	140	241	279	14	360	897	369	246
25 HP	3500	284JM	13 3/4	13	7	5 1/2	9 1/2	11	9/16	14.19	35.31	14.51	542
			349	330	178	140	241	279	14	360	897	369	246

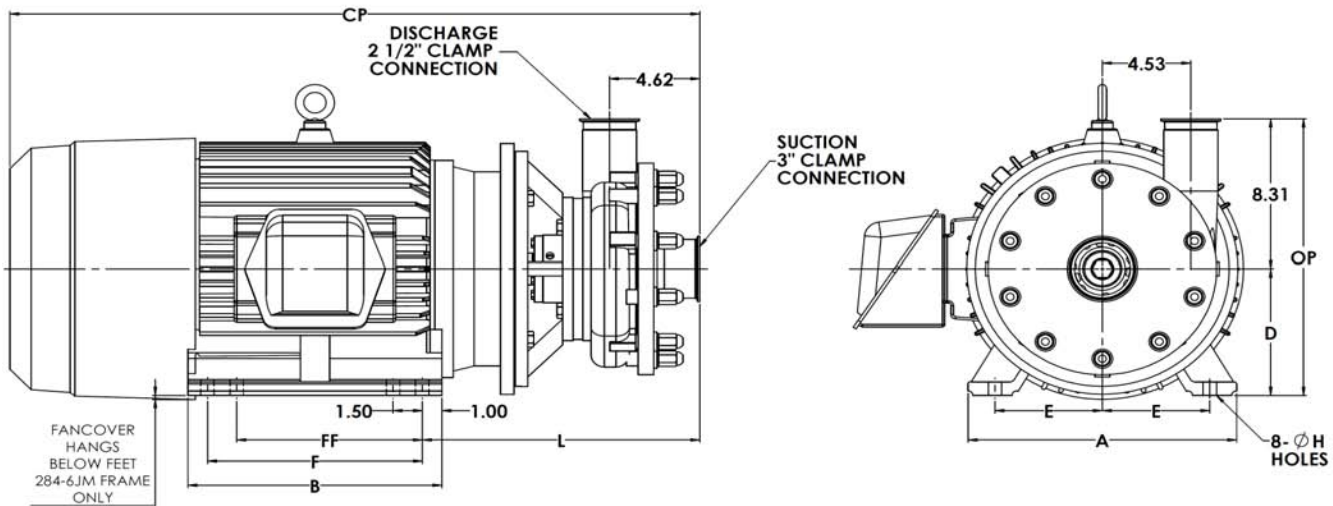
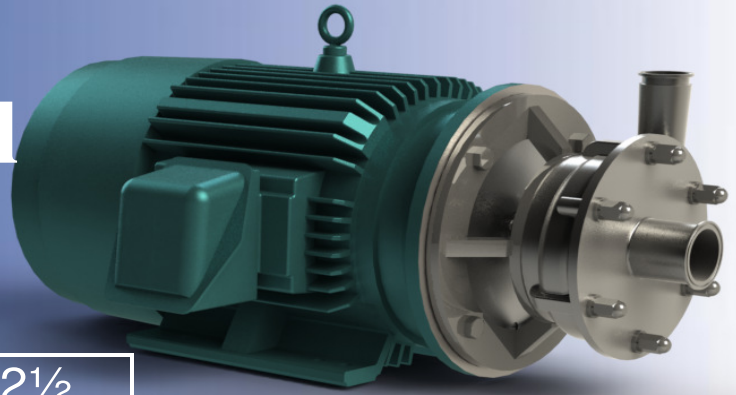
MATERIAL SPECIFICATIONS

PART NAME	STAINLESS STEEL
Casing, Cover & Impeller	316L Stainless
Shaft sleeve	316L Stainless
Adapter	304 Stainless

Ampco Centrifugal Pumps

DATA SHEET

MODEL LH-V542 3 x 2½



TEFC MOTOR			DIMENSIONS IN INCHES MILLIMETERS (For Reference Only)										APPROX WEIGHT
HP	RPM	FRAME	A (typ)	B (typ)	D	E	FF	F	ØH	L	CP	OP	LBS Kg
15 HP	3500	284JM	13 3/4	13	7	5 1/2	9 1/2	11	9/16	15.69	36.81	15.30	565
			349	330	178	140	241	279	14	398	935	389	257
20 HP	3500	284JM	13 3/4	13	7	5 1/2	9 1/2	11	9/16	15.69	36.81	15.30	565
			349	330	178	140	241	279	14	398	935	389	257
25 HP	3500	284JM	13 3/4	13	7	5 1/2	9 1/2	11	9/16	15.69	36.81	15.30	565
			349	330	178	140	241	279	14	398	935	389	257
30 HP	3500	286JM	13 3/4	13	7	5 1/2	9 1/2	11	9/16	15.69	36.81	15.30	580
			349	330	178	140	241	279	14	398	935	389	264
40 HP	3500	324JM	15 1/2	14 3/4	8	6 1/4	10 1/2	12	11/16	14.70	34.64	16.31	645
			394	375	203	159	267	305	17	373	880	414	293
50 HP	3500	326JM	15 1/2	14 3/4	8	6 1/4	10 1/2	12	11/16	14.70	34.64	16.31	685
			394	375	203	159	267	305	17	373	880	414	311

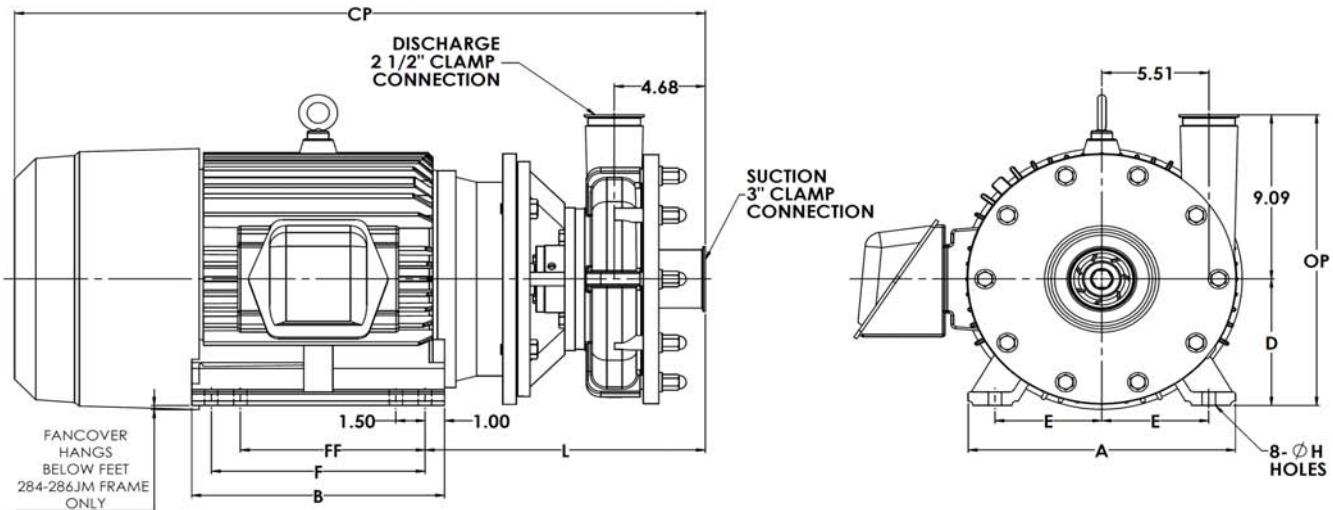
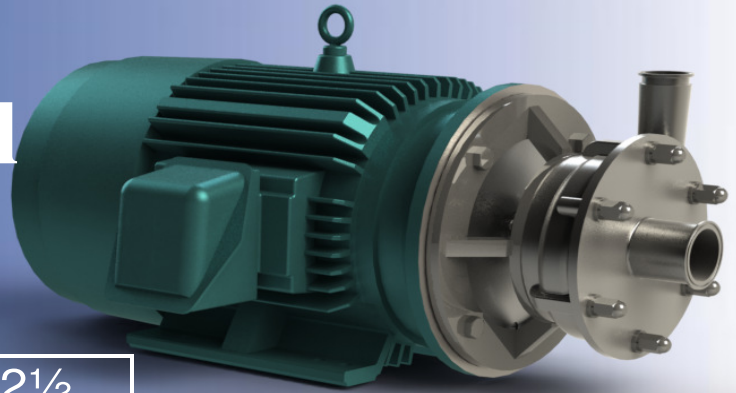
MATERIAL SPECIFICATIONS

PART NAME	STAINLESS STEEL
Casing, Cover & Impeller	316L Stainless
Shaft sleeve	316L Stainless
Adapter	304 Stainless

Ampco Centrifugal Pumps

DATA SHEET

MODEL LH-V552 3 x 2 1/2



TEFC MOTOR			DIMENSIONS IN INCHES MILLIMETERS (For Reference Only)										APPROX WEIGHT
HP	RPM	FRAME	A (typ)	B (typ)	D	E	FF	F	ØH	L	CP	OP	LBS Kg
25 HP	3500	284JM	13 3/4	13	7	5 1/2	9 1/2	11	9/16	14.19	35.31	16.08	604
			349	330	178	140	241	279	14	360	897	408	275
30 HP	3500	286JM	13 3/4	13	7	5 1/2	9 1/2	11	9/16	14.19	35.31	16.08	619
			349	330	178	140	241	279	14	360	897	408	281
40 HP	3500	324JM	15 1/2	14 3/4	8	6 1/4	10 1/2	12	11/16	14.92	34.86	17.09	684
			394	375	203	159	267	305	17	379	885	434	311
50 HP	3500	326JM	15 1/2	14 3/4	8	6 1/4	10 1/2	12	11/16	14.92	34.86	17.09	724
			394	375	203	159	267	305	17	379	885	434	329
60 HP	3500	364JM	17	15	9	7	11 1/4	12 1/4	11/16	15.54	37.24	18.09	1009
			432	381	229	178	286	311	17	395	946	459	459
75 HP	3500	365JM	17	15	9	7	11 1/4	12 1/4	11/16	15.54	37.24	18.09	1034
			432	381	229	178	286	311	17	395	946	459	470

MATERIAL SPECIFICATIONS

PART NAME	STAINLESS STEEL
Casing, Cover & Impeller	316L Stainless
Shaft sleeve	316L Stainless
Adapter	304 Stainless

Ampco Centrifugal Pumps

PUMP CURVES

MODEL LH-V532 2½ x 2

MODEL LH-V542 3 x 2½

MODEL LH-V552 3 x 2½

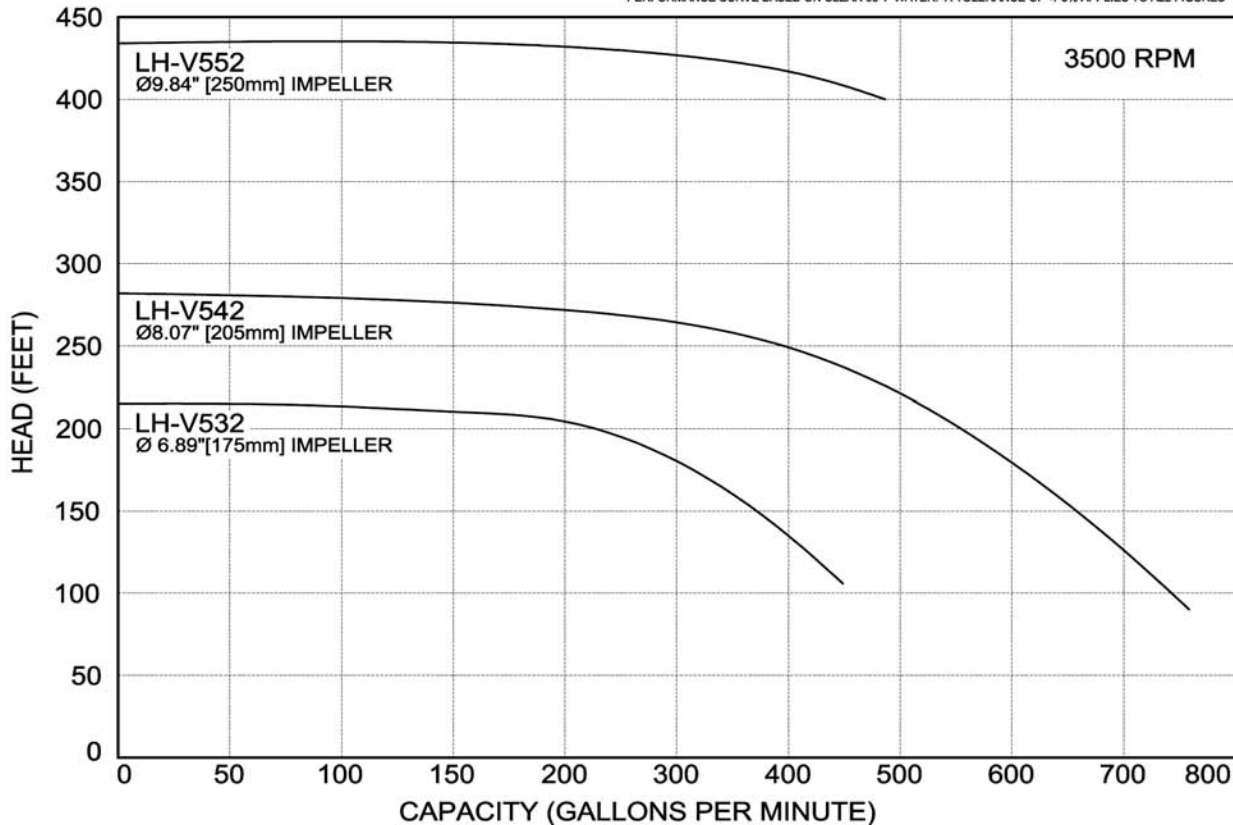
Curves show approximate characteristics based on clear 68°F water.

Rated point is guaranteed.

LH-Series pumps have standard stainless steel adapters, and silicon carbide vs. silicon carbide seals.
Standard seal components are silicon carbide/silicon carbide with EPDM elastomers.

AMPCO PUMPS COMPANY, INC. LH-SERIES COMPOSITE CURVES

PERFORMANCE CURVE BASED ON CLEAR 68°F WATER. A TOLERANCE OF +/-5% APPLIES TO ALL FIGURES



LH pumps are in conformance with 3A sanitary standards for centrifugal and positive rotary pumps for milk and milk products, Number 02-10.

LH-Series pumps have a standard 32Ra, 0.8µm (micrometers) finish, on all product contact surfaces.

AmpcoPumps Company

2045 West Mill Road-Glendale, Wisconsin 53209-PHONE (414) 643-1852-FAX (414) 643-4452