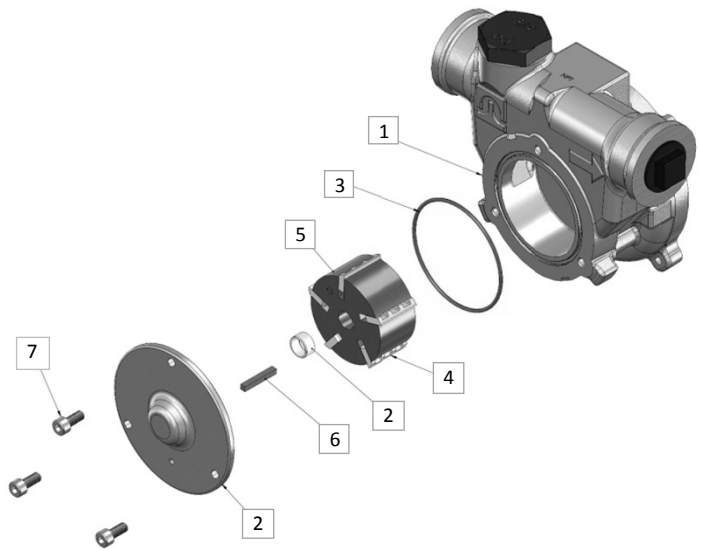


# FILL-RITE.

## KITFR32V DEF Pump Rotor Replacement Kit Installation Instructions

Description	Contents	Qty
DEF Pump Rotor Kit	#1 Pump Housing (not included in kit)	0
	#2 Rotor Cover (& Bushing)	1
	#3 O-ring Seal	1
	#4 Rotor Vane	5
	#5 Rotor	1
	#6 Rotor Key	1
	#7 Fastening Hardware	3



### Instructions for Installation of DEF Rotor Kit



**IMPORTANT!** Before opening your DEF pump to install this kit, be certain it has been thoroughly flushed and rinsed with de-ionized water. This will prevent the formation of DEF crystals in the pump housing and minimize the possibility of damage or “locking” of the rotor on restart.

- 1) Remove the rotor cover (item #2) by removing the fastening hardware (item #8).
- 2) Remove the O-ring seal (item #3) and discard. Inspect the seal seat for damage or debris. Clean as needed.
- 3) Using needle nose pliers, gently remove the rotor vanes (item #4), taking note of their orientation in the rotor.
- 4) Remove the rotor (item #5) from the pump housing.
- 5) Remove the rotor key (item #6) from the motor shaft.
- 6) Using a soft dry cloth, wipe the inside of the pump housing thoroughly. Inspect the rotor chamber for damage, debris, and abnormal or excessive wear. Clean as needed; do not use harsh chemicals or abrasive cleaners. Be sure the chamber is clean and dry before beginning reassembly.
- 7) Install new rotor key (item #6) onto motor shaft. Note position of rotor for correct rotation. Install rotor (item #5).
- 8) Insert rotor vanes into rotor; be certain they are positioned for proper rotation (insert vanes so the ribs are to the front and the angled end is at the top as shown in pictures).
- 9) Install bushing (item #2) in rotor (item #2) cover, and the new O-ring seal into position on the pump housing. Be sure it is seated properly and not twisted or pinched.
- 10) Install rotor cover using new hardware (item #7).

