

**US SERIES STAINLESS STEEL  
ROTARY GEAR PUMPS  
SIZES 6, 7, 8, 9, 10, 15 & 20 gpm**

Haight® Pump in continuing a 70 year old tradition of supplying our customers with rugged, reliable, and innovative pumps is pleased to offer pumps in Stainless Steel. We've combined our versatile *DIU Ductile Iron Universal Series* pump design with stainless steel and corrosion resistant materials to meet the needs of our customers ever changing process systems.

**Key Features:**

- "Gear within a Gear" design for quiet operation
- built in gear reduction, fully supported, through-shaft design, utilizes standard motor speeds
- *UniverSeal* built in shaft seal flexibility
- only two moving parts reduces maintenance and wear
- closed coupled or foot mounted bracket designs
- readily accepts magnetic drive option
- inlet/outlet ports accept 1", 1.25" and 1.5" NPT and 150# flange connections
- 250 PSI discharge pressure capability
- Non-Metallic Rotor eliminates galling problems, even with thin fluids including water
- integral relief valve with "No Leak" adjustment, and tank return operation capability

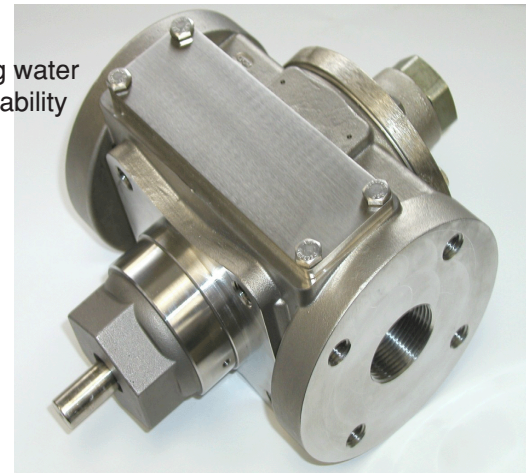
**Standard Construction Features:**

- 316L, (CF3M) Stainless Steel housing for maximum corrosion resistance
- Waukesha 88 pinion gear and 440C hardened, polished shaft assembly
- Delrin® AF rotor gear
- carbon graphite shaft sleeve bearings
- Viton® elastomers

**Options:**

- Alternate shaft seal and o-ring elastomer materials – Neoprene, Silicone, Teflon or Kalrez®
- PTFE Teflon rotor gear
- Teflon or Vespel shaft sleeve bearings
- 316L integral relief valve up to 230PSI
- magnetic drive and barrier seal available on all models

Additional Brackets for closed coupled mountings are available for motor frames up to 256TC. See "Mounting Options" on our website [www.haightpump.com](http://www.haightpump.com).

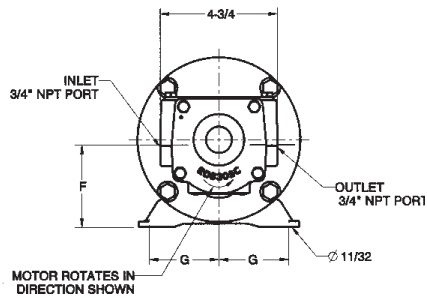


**Applications:**

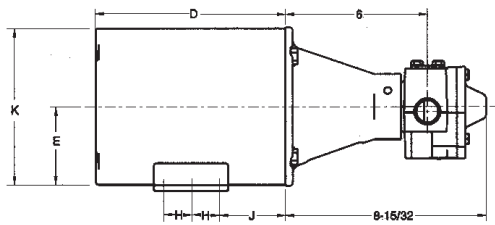
- Chemical Processing
- Pharmaceutical
- Wastewater Treatment • Textile
- Plastic
- Tanning • Soap • Rubber
- Photographic
- Plating • Injection and Transfer of acidic, corrosive fluids and solvents.

**Z56RO Bracket for 6-9 GPM Universal Stainless Series Round Hub Pumps**

Frame	D	E	F	G	H	J	K
48	9-3/8	3	2-13/16	2-1/8	1-3/8	2-5/16	5-13/16
56	9-3/4	3-1/2	3-5/16	2-7/16	1-1/2	2-9/16	6-3/4



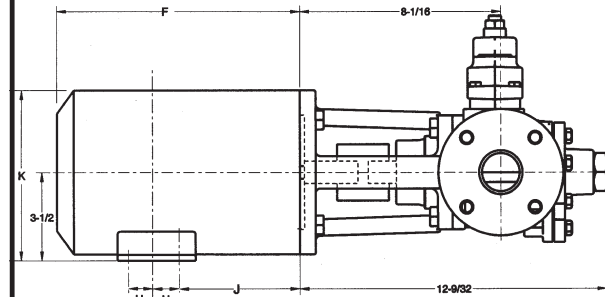
**FRONT VIEW**



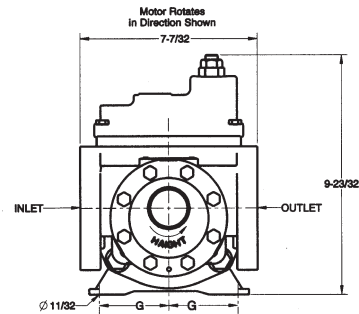
**LEFT SIDE**

**Z56SO Bracket For 10-40 GPM Square Flanged Pumps**

Frame	F	G	H	J	K
56	9-3/4	2-7/16	1-1/2	2-9/16	6-3/4
143	10	2-3/4	2-1/2	2-3/4	6-13/16



**LEFT SIDE**



**FRONT VIEW**

Additional Brackets for closed coupled mountings are available for motor frames up to 256TC. See "Mounting Options" on our website [www.hahtpump.com](http://www.hahtpump.com).

