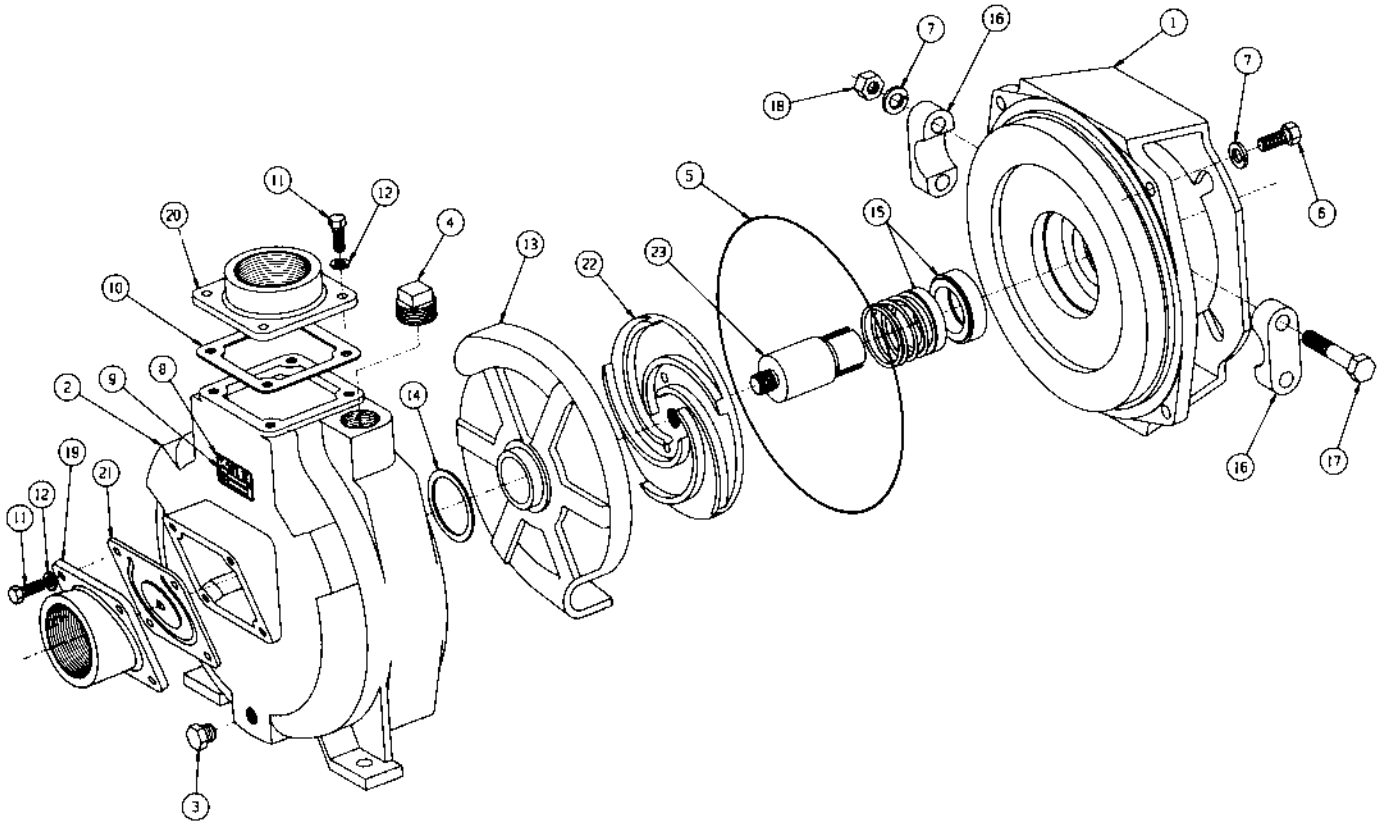


# MP PUMPS SERVICE PARTS LIST

- Self Priming
- Engine Mounting
- Pedestal
- Electric Motor

**HHLF** 1 1/2" x 1 1/2" Pipe Size  
2" x 2" Pipe Size



ITEM	CAST IRON	BRONZE	DESCRIPTION	QTY.	ITEM	CAST IRON	BRONZE	DESCRIPTION	QTY.
<b>ADAPTER</b>					<b>CLAMP</b>				
1	28824	29057	ADAPTER - 184TC	1				CLAMP ASS'Y	1
1	29092	29093	ADAPTER - PED/ENG	1	7			LOCKWASHER - S.S. - 3/8"	2
<b>HOUSING</b>					16			CLAMP	2
2	28818	29051	HOUSING	1	17			CAPSCREW - S.S. - 3/8"-16	2
3	21267		PIPE PLUG - S.S. - 1/4" NPT	1	18			HEXNUT - S.S. - 3/8"	2
4	41483		PIPE PLUG - 1" NPT	1	<b>FLANGE</b>				
5	28907		O-RING - VITON	1	19	22263	22262	INLET - 1 1/2"	1
6	21259		CAPSCREW - S.S. - 3/8"-16	4	19	22387	22386	INLET - 2"	1
7	21266		LOCKWASHER - S.S. - 3/8"	4	20	22266	22265	OUTLET - 1 1/2"	1
8	21183		NAME PLATE	1	20	22311	22310	OUTLET - 2"	1
9	21122		DRIVE SCREW	2	<b>FLAPPER - SUCTION CHECK VALVE</b>				
10	22256		GASKET - OUTLET FLANGE - BUNA	1	21			FLAPPER ASS'Y - BUNA	1
11	21242		CAPSCREW - S.S. - 5/16"-18	8	21			FLAPPER ASS'Y - EPDM - OPT.	1
12	21238		LOCKWASHER - S.S. - 5/16"	8	<b>IMPELLER</b>				
<b>VOLUTE</b>					22	28822	29055	IMPELLER	1
13	28820	29053	VOLUTE repl by 33453	1	23	28825		DRIVE SLEEVE - S.S. - PED/ENG	1
14	28908		GASKET - VITON	1	23	28826		DRIVE SLEEVE - S.S. - 184TC	1
<b>SEAL</b>									
15	29533		SEAL ASS'Y - 1.50" DIA. SHAFT	1					



**MP PUMPS, INC.**  
TECUMSEH PRODUCTS COMPANY  
34800 BENNETT DRIVE • FRASER, MI 48026-1686  
(810) 293-8240 • FAX (810) 293-8469

**FORM 3041-A**

PRINTED IN U.S.A. (7/97)