



# LS PUMP

- MARINE
- COMMERCIAL
- INDUSTRIAL

CIRCULATOR PUMP

316 STAINLESS STEEL  
INVESTMENT CAST  
CONSTRUCTION

SUPERIOR  
CORROSION  
RESISTANCE

115V AC MOTOR

3/4" Flanges

CARBON/CERAMIC/VITON  
SEAL

EASY INSTALLATION

Form 8117 (08-04)

The LS is a high performance stainless steel circulator pump. Its uses are marine, commercial, and industrial transfer of chemicals or potable water.

All pump parts are 316 stainless for superior corrosion resistance when pumping chemical compounds. A carbon, ceramic, viton, bellows shaft seal is standard. 3/4 inch NPT flanges and base mounted vibration isolators simplify installation.

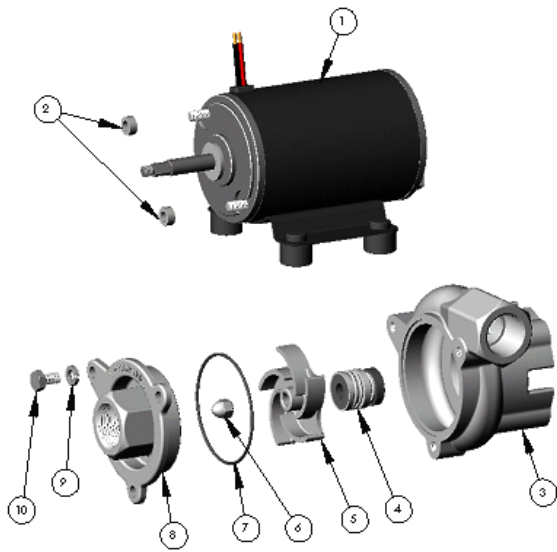
---

## SPECIFICATIONS

---

Housing.....	316 Stainless Steel (investment cast)
Cover.....	316 Stainless Steel (investment cast)
Impeller.....	316 Stainless Steel, Semi-open (sintered PM)
Mechanical Seal.....	Carbon/Ceramic/Viton Bellows 150 PSI Special seals upon request
O-Ring.....	Viton
Motor.....	115v ac single phase PSC
Size.....	8 x 4.5 x 4.5 inches
Weight.....	7.7 lbs.

---



ITEM	QTY.	PART NO.	DESCRIPTION
1	1	34036	12 VDC MOTOR
		34293	24 VDC MOTOR
		34294	32 VDC MOTOR
		34295	110 VAC MOTOR
2	2	34369	GROMMET
3	1	34032	HOUSING- 316 SS
4	1	34038	MECH SEAL- VITON
5	1	34033	IMPELLER- 316 SS
6	1	28766	ACORN NUT 316 SS
7	1	34040	ORING- VITON
8	1	34035	COVER- 316 SS
9	3	33564	LOCKWASHER 316 SS
10	3	34037	1/4-20 CAPSCREW 316 SS

**LS PUMP PSC MOTOR**  
**3/4" NPT X 3/4" NPT**  
**3500 RPM**

