

# BRONZE PEDESTAL RUBBER IMPELLER PUMP

ENGINE MOUNTED UNIT DESIGNED SPECIFICALLY FOR PALMER MARINE ENGINE

PIPE SIZE: 1"



## FEATURES

- Bronze Construction - Corrosion Resistant
- Reversible Wearplate
- Teflon(R)\* Barrier Seals Protecting Ball Bearings
- Mechanical Carbon Ring, Ceramic Face Main Pump Seal
- Two sealed ball bearings spaced for maximum load ability
- Large vent & drain openings separate seal & bearing areas
- Shaft slinger for additional bearing protection
- Neoprene impeller
- High chrome nickel stainless steel shaft
- O-ring seal between body and cover eliminates gasket problems
- Impeller & cam easily replaced
- Vertical up ports

## ROTATION

Direction of shaft rotation determines inlet and outlet ports (see drawing on back)

## MOUNTING

Pump will operate satisfactorily when mounted in any position.

## DO NOT RUN DRY

rubber impellers generate high rubbing friction unless lubricated by liquid pumped. Lack of liquid will cause impeller to burn up.

## DRIVE

Either direct drive with flexible coupling or pulley drive can be used. make sure both flexible coupling halves are properly aligned. When using pulley do not overtighten belt.

## CAPACITY Water at 60° F

Pump	RPM	Feet Hd.	0	20	40	60	80
		PSI	0	8.7	17.3	26	34.6
404M	800	GPM	12.0	11.0	9.7	7.5	2.0
		HP	1/2	1/2	1/2	1/2	3/4
	1750	GPM	25.0	24.0	22.2	19.1	15.0
		HP	3/4	3/4	3/4	1	1
	2500	GPM	32.5	30.5	27.0	24.0	17.5
		HP	1	1 1/2	1 1/2	2	2
3000	GPM	36.0	34.5	31.0	27.5	21.0	
	HP	1 1/2	1 1/2	1 1/2	2	2	

## LIQUIDS AND TEMPERATURE

Liquids compatible with neoprene can be pumped including fresh and salt water solutions and mild chemicals. Do not pump severe solvents or acids. When possible flush pump with fresh water after each use.

Extremes of cold and heat will affect impeller life. Limits of 40o to 140oF should be observed. Do not allow liquid in pump to freeze. Drain pump by loosening cover screws. Use methyl alcohol based anti-freeze compounds such as Zerex, Shell Zone, Pyro Permanent, Permagard, and Dowgard.

## SUCTION LIFT

Suction lift of 15 ft is possible when impeller is wet. Suction lines must be air tight in order for pump to self prime. A foot valve at beginning of suction line is recommended.

## IMPELLER REPLACEMENT

The impeller must be replaced if it is worn out or has been damaged by debris or by running the pump dry. Symptoms of a defective impeller are low pumping pressure and low flow causing overheating of the boat engine. Poor pump performance can also be caused by slippage of V-belts, so belts should be checked for tightness.

To replace the impeller remove screws and cover. Pull out the impeller with nose pliers or two screwdrivers. Be careful not to dent the pumping chamber with these tools. When inserting new impeller, line up key slot in impeller with the key in the shaft. Use oil on shaft and avoid forcing the impeller onto the shaft.

The impeller should also be removed for storage periods to prevent the blades from taking a permanent set.

## SEAL REPLACEMENT

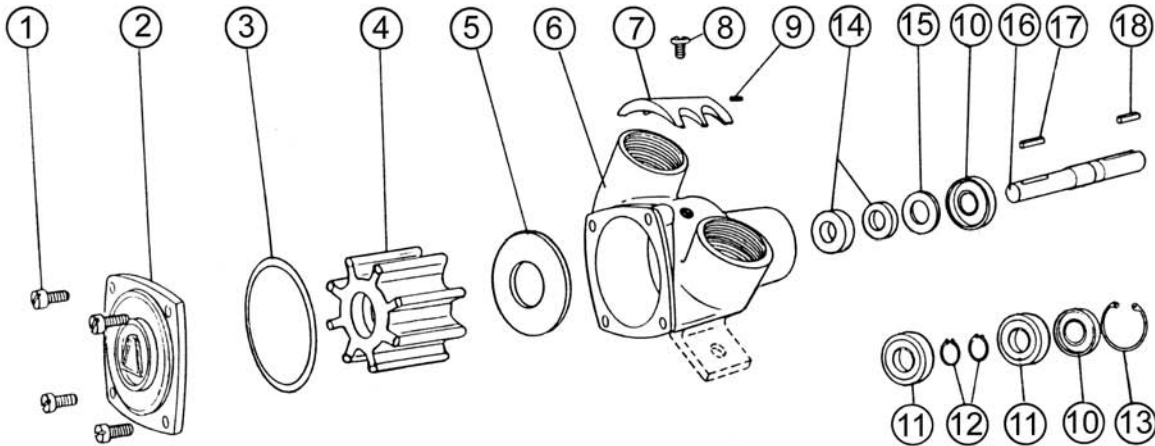
If water drips from the weep hole or from the area where the shaft exits the pump, the seal is defective and must be replaced. Prolonged running of the pump with a leaky seal can destroy the ball bearings resulting in catastrophic pump failure and engine shut-down.

For seal replacement, the pump must be removed from the engine and disassembled in order to gain access to the seal area. Where mechanical seals are used, both components (stationary and rotating member)

(continued on back)

# BRONZE PEDESTAL RUBBER IMPELLER PUMP

## EXPLODED VIEW AND PARTS LIST



Pump No.	1	2	3 <sup>1</sup>	4 <sup>1</sup>	5	6	7	8	9	10
	Screw	Cover	O-Ring	Impeller	Wear Plate	Body	Cam	Screw	Pin	Lip Seal
	4 Req'd	1 Req'd	1 Req'd	1 Req'd	1 Req'd	1 Req'd	1 Req'd	1 Req'd	1 Req'd	2 Req'd
404M	5504	6924	8230	6603	6635	6932	6606	7300-62	6685	6609
404M-01	5504	6924	8230	7466	6635	6932	6606	7300-62	6685	6609

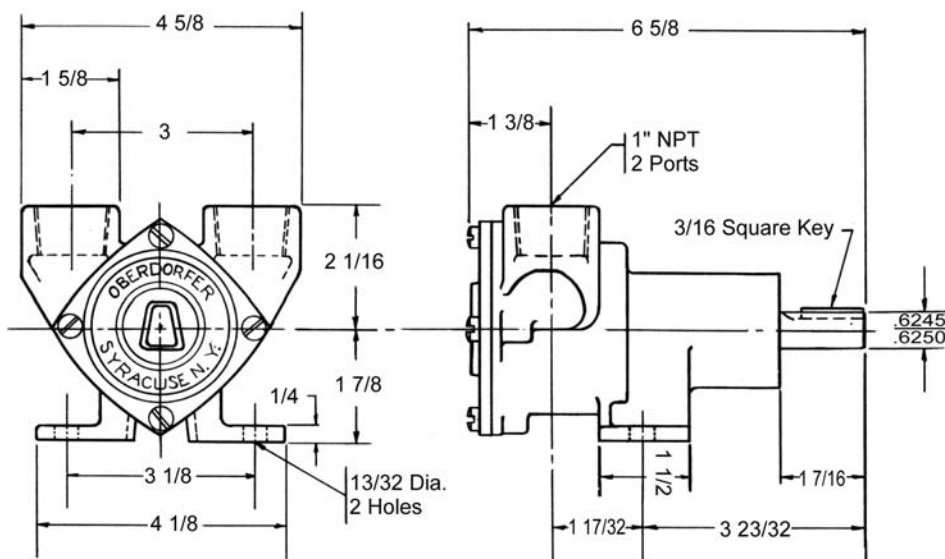
11	12	13	14 <sup>1</sup>	15	16	17	18	Repair Kit <sup>1</sup>
Ball Bearing	Snap Ring	Snap Ring	Seal Assy.	Washer Seal	Shaft	Key Intern.	Key Extern.	
2 Req'd	2 Req'd	1 Req'd	1 Req'd	1 Req'd	1 Req'd	1 Req'd	1 Req'd	
5928	5926	5925	32230	6631	6637	5475	6567	10705
5928	5926	5925	32230	6631	6637	5475	6567	Need

<sup>1</sup> Repair Kit contains items 3, 4 & 14.



**ROTATION DIAGRAM  
LOOKING AT COVER**

### DIMENSIONS



(continued from front)

must be replaced at the same time. Lip seals must be pushed out of their press-fitted position and new seals pressed into place, using a sealant on the outside of the lip seal housing.

Refer to exploded view drawings for seal location and part numbers for ordering purposes.