



OBERDORFER

THERMOPLASTIC SELF PRIMING CENTRIFUGAL PUMPS

MODELS
90P 93P
91P

PEDESTAL DRIVE - PIPE SIZE: 90P, 91P 2"
93P 3"



See model 900 for close coupled electric motor drive.
See models 900G, 910G, 930G, 940G for close coupled gas engine drive.

APPLICATIONS

INDUSTRIAL - CHEMICAL - AGRICULTURE
MARINE - CONTRACTOR - UTILITY

- n General Water Supply
- n Emergency Stand-by
- n Lawn Sprinkling
- n Pumping from Underground Tanks
- n Industrial Sump Drainage
- n Recirculation of Process Liquids
- n Dewatering of Ditches, Cellars, Ponds
- n Washing Down Barns or Equipment
- n Irrigation - Flood Furrow or Sprinkler
- n Pumping Cess Pools

TEMPERATURE RANGE: -20°F to 130°F

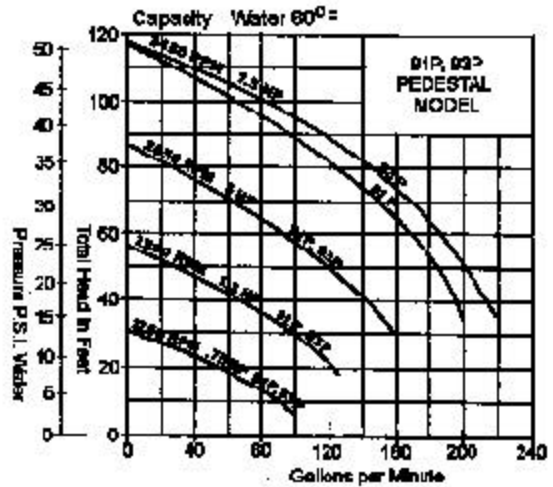
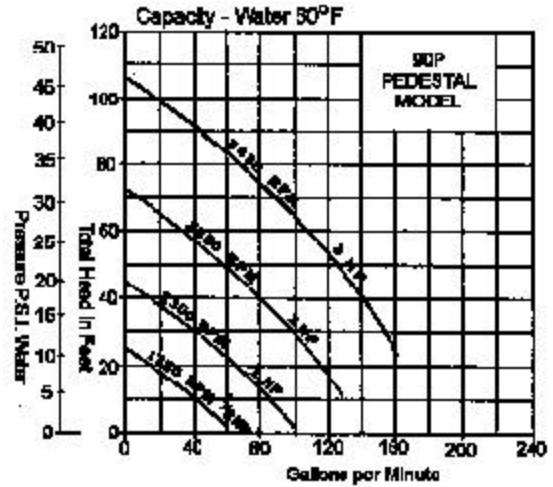
SPECIAL MODEL DESIGNATIONS

n To specify seal made of Viton(R) & rubber parts of Viton, add -10 to basic pump numbers. (Example 90P-10). Typical applications include solvents and chemicals.

n To specify seal made of Viton(R) & rubber parts of EPDM, add -12 to basic pump numbers. (Example 90P-12). Typical applications include agricultural chemicals.

n To specify rubber Volute liner, add -13 to basic pump numbers (Example 90P-13). Typical applications include dirty liquids.

Note: Viton(R) is a registered trademark of DuPont Dow Elastomers.



For speed below 3450 RPM, single curves are shown because flow differences are not significant.

FEATURES

- n Tough, lightweight, thermoplastic polyester housings and impellers for chemical and wear resistance.
- n Excellent corrosion resistance to water, acids and most organic solvents - liquids normally requiring expensive pump liners or stainless steel construction.
- n Quiet, efficient, long life.
- n Self priming to 25 feet suction lift in approximately 1 minute depending on pump R.P.M. and altitude.
- n Stainless steel fasteners.
- n Mechanical seals with ceramic wearface mating with lapped carbon.
- n Standard seal elastomer material is Buna - also available in Viton® - also available in EPDM.
- n Rubber Volute liner is available for dirty liquids.
- n Built in check valve prevents back flow when pump is shut down.

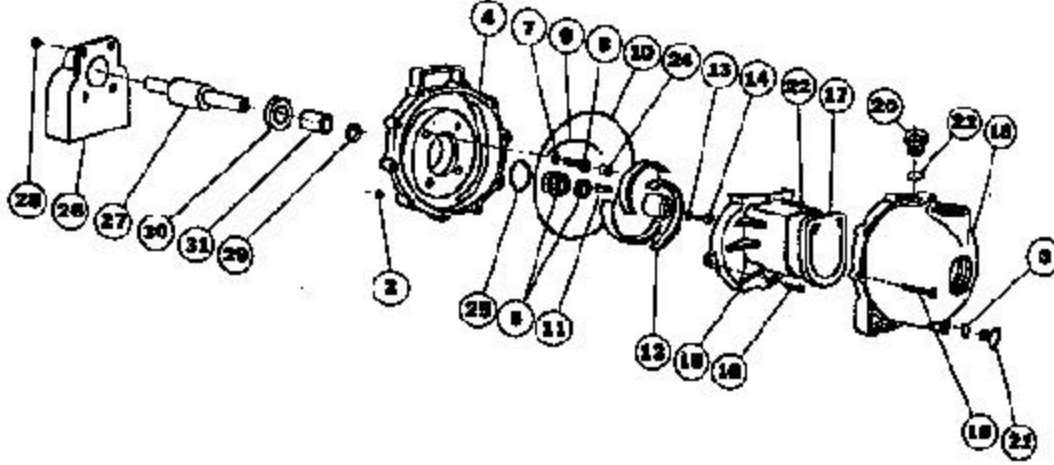
MODELS
90P 93P
91P

OBERDORFER

THERMOPLASTIC SELF PRIMING CENTRIFUGAL PUMPS



EXPLODED VIEW AND PARTS LIST

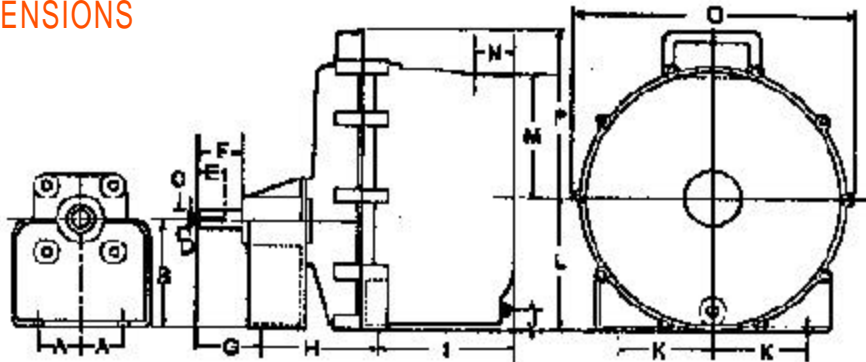


Repair Kit No.	Pump No.	2	3	4	5	7	8	9	10	11	12	13	14	15	16
		Hex Nut	O-Ring	Bracket	Seal Assy.	O-Ring	Screw	O-Ring Segment	O-Ring	Key	Impeller	O-Ring	Screw	Volute	Screw
		10 Req'd	1 Req'd	1 Req'd	1 Req'd	4 Req'd	4 Req'd	1 Req'd	1 Req'd	1 Req'd	1 Req'd	1 Req'd	1 Req'd	1 Req'd	2 Req'd
024-704	90P	721-00	1009-71	703-30	714-11	717-71	728-10	754-71	719-71	718-00	704-30	717-71	716-10	702-30	725-10
024-706	91P	721-00	1009-71	703-30	714-11	717-71	728-10	754-71	719-71	718-00	704-30	717-71	716-10	702-30	725-10
024-706	93P	721-00	1009-71	703-30	714-11	717-71	728-10	754-71	719-71	718-00	704-30	717-71	716-10	702-30	725-10

Pump No.	17	18	19	20	21	22	23	24	25	26	27	28	29	30	31
	Check Valve	Body	Screw	Filler Plug	Drain Plug	Volute Screw	O-Ring	Screw Plug	O-Ring	Bearing Pedestal	Bearing Assy.	Hex Nut	Shim	Slinger	Shaft Sleeve
	1 Req'd	1 Req'd	10 Req'd	1 Req'd	1 Req'd	1 Req'd	1 Req'd	4 Req'd	1 Req'd	1 Req'd	1 Req'd	4 Req'd	As Req'd	1 Req'd	1 Req'd
90P	705-71	1002-30	720-00	722-30	723-30	771-10	765-71	750-40	976-71	759-20	777-00	745-00	778-11	884-71	882-90
91P	705-71	1002-30	720-00	722-30	723-30	771-10	765-71	750-40	976-71	759-20	777-00	745-00	778-11	884-71	882-90
93P	705-71	1002-30	720-00	722-30	723-30	771-10	765-71	750-40	976-71	759-20	777-00	745-00	778-11	884-71	882-90

Note: Repair Kit includes 3, 5, 7, 9, 11, 12, 13, 14, 16, 22, 23, 25, & 29

DIMENSIONS



Pump No.	Suction & Discharge	A	B	C	D	E	F	G	H	I	J	K	L	M	N	O	P
90P	2"NPT	1.6	4.17	0.75	0.188	1	1.8	2.5	4.6	5.3	0.8	3.7	5.17	4.7	1.5	11	6.5
91P	2" NPT	1.6	4.17	0.75	0.188	1	1.8	2.5	4.6	5.3	0.8	3.7	5.17	4.7	1.5	11	6.5
93P	3" NPT	1.6	4.17	0.75	0.188	1	1.8	2.5	4.6	7.8	0.8	3.7	5.17	4.45	1.95	11	6.5

7/00

Specifications are subject to change without notice.